



**April  
2026**

# Kansas Statewide MLS Statistics



## State of Kansas Housing Report



### Market Overview

#### Kansas Home Sales Fell in April

Total home sales in the state of Kansas fell last month to 3,241 units, compared to 3,268 units in April 2025. Total sales volume was \$1,117.2 million, up from a year earlier.

The median sale price in April was \$285,000, up from \$270,000 a year earlier. Homes that sold in April were typically on the market for 10 days and sold for 100.0% of their list prices.

#### Kansas Active Listings Up at End of April

The total number of active listings in the state of Kansas at the end of April was 6,674 units, up from 6,581 at the same point in 2025. This represents a 2.1 months' supply of homes available for sale. The median list price of homes on the market at the end of April was \$329,900.

During April, a total of 3,740 contracts were written down from 3,752 in April 2025. At the end of the month, there were 4,950 contracts still pending.

### Report Contents

- Summary Statistics – Page 2
- Closed Listing Analysis – Page 3
- Active Listings Analysis – Page 7
- Months' Supply Analysis – Page 11
- New Listings Analysis – Page 12
- Contracts Written Analysis – Page 15
- Pending Contracts Analysis – Page 19

### Contact Information

Maranda DeSanto, Chief Executive Officer  
 Kansas Association of REALTORS®  
 534 S. Kansas Avenue, Suite 1229  
 Topeka, KS 66603  
 800-366-0069  
[maranda@kansasrealtor.com](mailto:maranda@kansasrealtor.com)  
[www.kansasrealtor.com](http://www.kansasrealtor.com)



**April  
2026**

# Kansas Statewide MLS Statistics



## State of Kansas Summary Statistics

April MLS Statistics Three-year History		Current Month			Year-to-Date		
		2026	2025	2024	2026	2025	2024
<b>Home Sales</b>		<b>3,241</b>	<b>3,268</b>	<b>3,278</b>	<b>10,494</b>	<b>10,037</b>	<b>10,076</b>
Change from prior year		-0.8%	-0.3%	13.8%	4.6%	-0.4%	1.4%
<b>Active Listings</b>		<b>6,674</b>	<b>6,581</b>	<b>5,450</b>	<b>N/A</b>	<b>N/A</b>	<b>N/A</b>
Change from prior year		1.4%	20.8%	24.3%			
<b>Months' Supply</b>		<b>2.1</b>	<b>2.2</b>	<b>1.8</b>	<b>N/A</b>	<b>N/A</b>	<b>N/A</b>
Change from prior year		-4.5%	22.2%	28.6%			
<b>New Listings</b>		<b>4,954</b>	<b>4,904</b>	<b>4,494</b>	<b>15,995</b>	<b>15,515</b>	<b>14,693</b>
Change from prior year		1.0%	9.1%	7.5%	3.1%	5.6%	7.2%
<b>Contracts Written</b>		<b>3,740</b>	<b>3,752</b>	<b>3,636</b>	<b>12,910</b>	<b>12,344</b>	<b>12,273</b>
Change from prior year		-0.3%	3.2%	-3.2%	4.6%	0.6%	0.7%
<b>Pending Contracts</b>		<b>4,950</b>	<b>5,177</b>	<b>4,600</b>	<b>N/A</b>	<b>N/A</b>	<b>N/A</b>
Change from prior year		-4.4%	12.5%	0.0%			
<b>Sales Volume (1,000s)</b>		<b>1,117,194</b>	<b>1,049,760</b>	<b>1,013,387</b>	<b>3,549,215</b>	<b>3,151,929</b>	<b>2,984,208</b>
Change from prior year		6.4%	3.6%	18.9%	12.6%	5.6%	7.6%
Average	<b>Sale Price</b>	<b>344,707</b>	<b>321,224</b>	<b>309,148</b>	<b>338,214</b>	<b>314,031</b>	<b>296,199</b>
	Change from prior year	7.3%	3.9%	4.5%	7.7%	6.0%	6.1%
	<b>List Price of Actives</b>	<b>437,548</b>	<b>413,946</b>	<b>430,153</b>	<b>N/A</b>	<b>N/A</b>	<b>N/A</b>
	Change from prior year	5.7%	-3.8%	-3.2%			
	<b>Days on Market</b>	<b>43</b>	<b>44</b>	<b>39</b>	<b>50</b>	<b>47</b>	<b>45</b>
Change from prior year	-2.3%	12.8%	11.4%	6.4%	4.4%	15.4%	
	<b>Percent of List</b>	<b>99.2%</b>	<b>99.2%</b>	<b>99.3%</b>	<b>98.7%</b>	<b>98.7%</b>	<b>98.8%</b>
Change from prior year	0.0%	-0.1%	-0.9%	0.0%	-0.1%	-0.2%	
	<b>Percent of Original</b>	<b>97.7%</b>	<b>97.8%</b>	<b>98.1%</b>	<b>96.7%</b>	<b>96.9%</b>	<b>97.1%</b>
Change from prior year	-0.1%	-0.3%	-0.9%	-0.2%	-0.2%	-0.4%	
Median	<b>Sale Price</b>	<b>285,000</b>	<b>270,000</b>	<b>250,000</b>	<b>275,000</b>	<b>262,500</b>	<b>245,000</b>
	Change from prior year	5.6%	8.0%	4.7%	4.8%	7.1%	8.4%
	<b>List Price of Actives</b>	<b>329,900</b>	<b>310,000</b>	<b>342,750</b>	<b>N/A</b>	<b>N/A</b>	<b>N/A</b>
	Change from prior year	6.4%	-9.6%	-2.0%			
	<b>Days on Market</b>	<b>10</b>	<b>9</b>	<b>8</b>	<b>20</b>	<b>16</b>	<b>15</b>
Change from prior year	11.1%	12.5%	33.3%	25.0%	6.7%	50.0%	
	<b>Percent of List</b>	<b>100.0%</b>	<b>100.0%</b>	<b>100.0%</b>	<b>100.0%</b>	<b>100.0%</b>	<b>100.0%</b>
Change from prior year	0.0%	0.0%	0.0%	0.0%	0.0%	0.0%	
	<b>Percent of Original</b>	<b>100.0%</b>	<b>100.0%</b>	<b>100.0%</b>	<b>98.8%</b>	<b>99.1%</b>	<b>99.3%</b>
Change from prior year	0.0%	0.0%	0.0%	-0.3%	-0.2%	-0.7%	

Note: Year-to-date statistics cannot be calculated for Active Listings, Months' Supply and Pending Contracts.



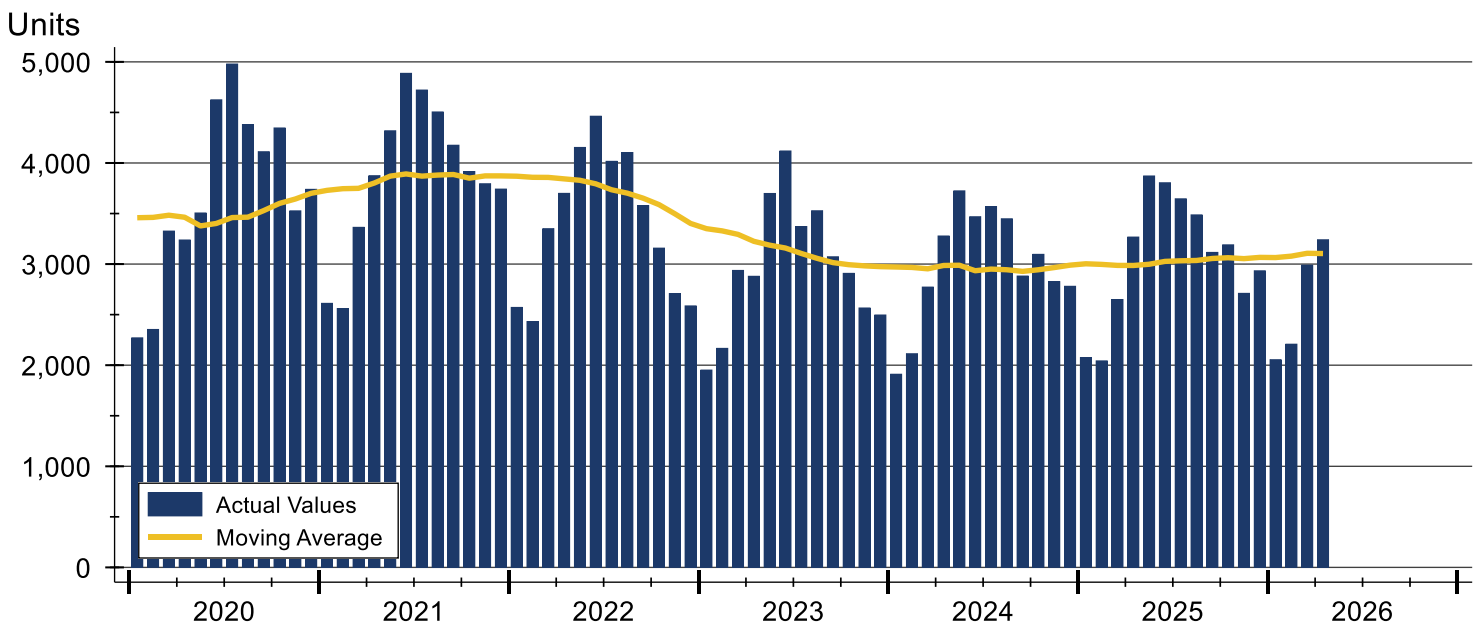
# State of Kansas Closed Listings Analysis

Summary Statistics for Closed Listings		2026	April 2025	Change	2026	Year-to-Date 2025	Change
Closed Listings		3,241	3,268	-0.8%	10,494	10,037	4.6%
Volume (1,000s)		1,117,194	1,049,760	6.4%	3,549,215	3,151,929	12.6%
Months' Supply		2.1	2.2	-4.5%	N/A	N/A	N/A
Average	Sale Price	344,707	321,224	7.3%	338,214	314,031	7.7%
	Days on Market	43	44	-2.3%	50	47	6.4%
	Percent of List	99.2%	99.2%	0.0%	98.7%	98.7%	0.0%
	Percent of Original	97.7%	97.8%	-0.1%	96.7%	96.9%	-0.2%
Median	Sale Price	285,000	270,000	5.6%	275,000	262,500	4.8%
	Days on Market	10	9	11.1%	20	16	25.0%
	Percent of List	100.0%	100.0%	0.0%	100.0%	100.0%	0.0%
	Percent of Original	100.0%	100.0%	0.0%	98.8%	99.1%	-0.3%

A total of 3,241 homes sold in the state of Kansas in April, down from 3,268 units in April 2025. Total sales volume rose to \$1,117.2 million compared to \$1,049.8 million in the previous year.

The median sales price in April was \$285,000, up 5.6% compared to the prior year. Median days on market was 10 days, down from 17 days in March, but up from 9 in April 2025.

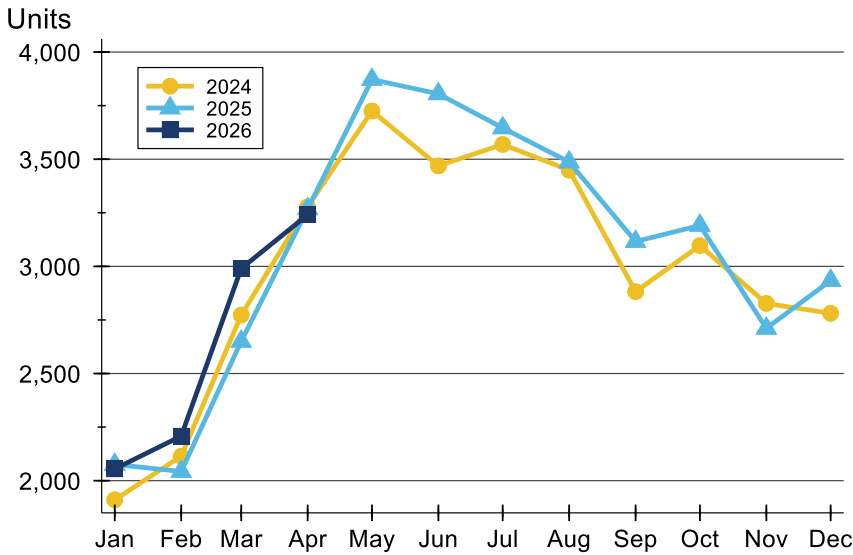
## History of Closed Listings





## State of Kansas Closed Listings Analysis

### Closed Listings by Month



Month	2024	2025	2026
<b>January</b>	1,911	2,076	<b>2,055</b>
<b>February</b>	2,114	2,043	<b>2,208</b>
<b>March</b>	2,773	2,650	<b>2,990</b>
<b>April</b>	3,278	3,268	<b>3,241</b>
<b>May</b>	3,725	3,872	
<b>June</b>	3,469	3,805	
<b>July</b>	3,569	3,646	
<b>August</b>	3,449	3,487	
<b>September</b>	2,882	3,116	
<b>October</b>	3,097	3,191	
<b>November</b>	2,827	2,711	
<b>December</b>	2,781	2,934	

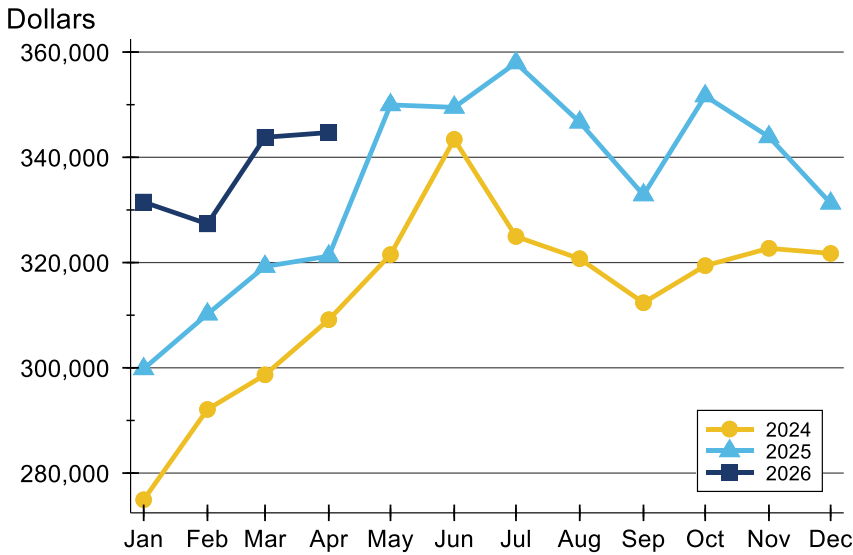
### Closed Listings by Price Range

Price Range	Sales		Months' Supply	Sale Price		Days on Market		Price as % of List		Price as % of Orig.	
	Number	Percent		Average	Median	Avg.	Med.	Avg.	Med.	Avg.	Med.
Below \$25,000	20	0.6%	1.2	15,633	16,250	48	44	74.2%	73.4%	69.3%	66.3%
\$25,000-\$49,999	52	1.6%	1.3	37,492	37,625	84	38	83.7%	86.6%	75.9%	75.5%
\$50,000-\$99,999	185	5.7%	1.9	76,588	78,000	56	25	94.9%	95.9%	91.0%	93.1%
\$100,000-\$124,999	128	3.9%	1.6	111,759	111,775	47	14	97.2%	99.5%	94.5%	96.0%
\$125,000-\$149,999	166	5.1%	1.9	135,414	135,000	44	14	99.8%	100.0%	97.4%	97.4%
\$150,000-\$174,999	199	6.1%	1.5	162,245	163,000	46	14	98.5%	100.0%	96.2%	99.0%
\$175,000-\$199,999	183	5.6%	2.3	186,258	185,000	54	14	98.5%	100.0%	96.6%	98.2%
\$200,000-\$249,999	362	11.2%	1.8	225,492	225,000	41	11	99.4%	100.0%	98.2%	99.8%
\$250,000-\$299,999	427	13.2%	1.7	273,107	275,000	34	7	99.6%	100.0%	98.3%	100.0%
\$300,000-\$399,999	597	18.4%	1.8	343,731	341,000	36	9	99.9%	100.0%	98.9%	100.0%
\$400,000-\$499,999	371	11.4%	2.0	440,495	436,100	31	3	101.1%	100.0%	100.5%	100.0%
\$500,000-\$749,999	363	11.2%	3.2	601,245	593,000	51	10	100.5%	100.0%	99.9%	100.0%
\$750,000-\$999,999	108	3.3%	4.2	848,414	833,950	69	15	101.0%	100.0%	99.8%	100.0%
\$1,000,000 and up	80	2.5%	4.6	1,510,634	1,350,000	52	3	99.4%	100.0%	98.8%	100.0%



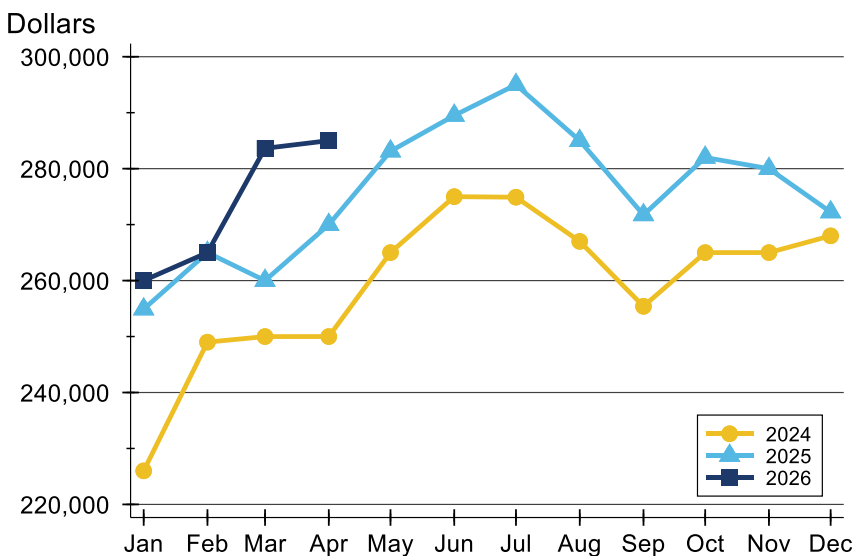
# State of Kansas Closed Listings Analysis

## Average Price



Month	2024	2025	2026
<b>January</b>	274,930	299,803	<b>331,499</b>
<b>February</b>	292,096	310,204	<b>327,353</b>
<b>March</b>	298,677	319,257	<b>343,811</b>
<b>April</b>	309,148	321,224	<b>344,707</b>
<b>May</b>	321,514	349,967	
<b>June</b>	343,418	349,491	
<b>July</b>	324,960	357,937	
<b>August</b>	320,736	346,667	
<b>September</b>	312,369	332,846	
<b>October</b>	319,413	351,664	
<b>November</b>	322,711	343,889	
<b>December</b>	321,737	331,270	

## Median Price

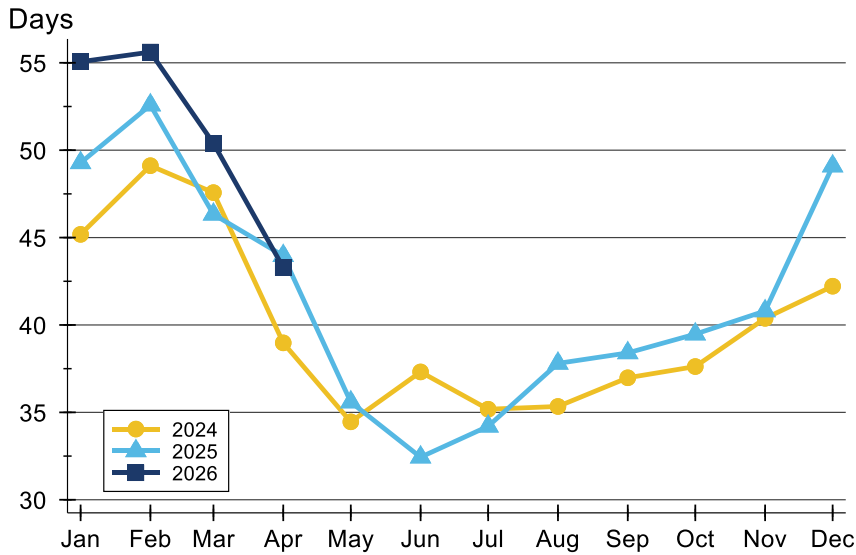


Month	2024	2025	2026
<b>January</b>	226,000	254,900	<b>260,000</b>
<b>February</b>	249,000	265,000	<b>265,000</b>
<b>March</b>	250,000	260,000	<b>283,634</b>
<b>April</b>	250,000	270,000	<b>285,000</b>
<b>May</b>	265,000	283,125	
<b>June</b>	275,000	289,500	
<b>July</b>	274,900	295,000	
<b>August</b>	267,000	285,000	
<b>September</b>	255,400	271,738	
<b>October</b>	265,000	282,000	
<b>November</b>	265,000	280,000	
<b>December</b>	268,000	272,250	



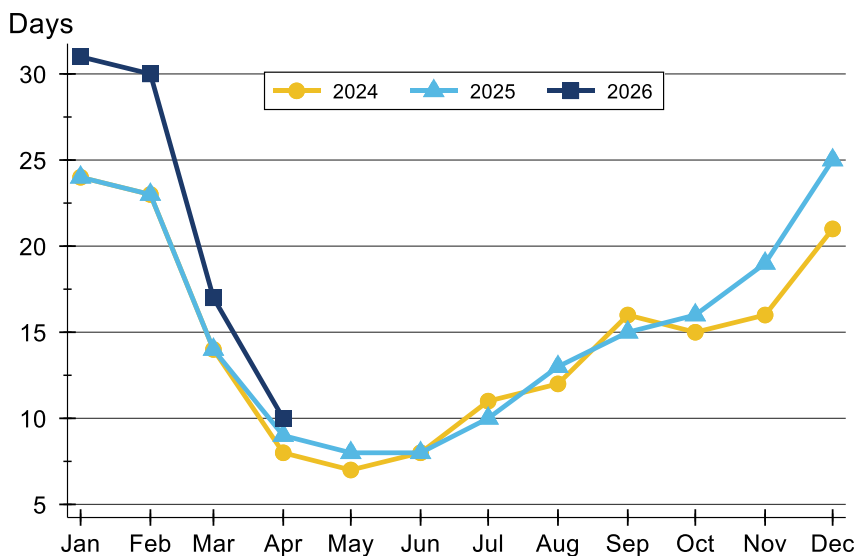
## State of Kansas Closed Listings Analysis

### Average DOM



Month	2024	2025	2026
January	45	49	<b>55</b>
February	49	53	<b>56</b>
March	48	46	<b>50</b>
April	39	44	<b>43</b>
May	34	36	
June	37	32	
July	35	34	
August	35	38	
September	37	38	
October	38	39	
November	40	41	
December	42	49	

### Median DOM



Month	2024	2025	2026
January	24	24	<b>31</b>
February	23	23	<b>30</b>
March	14	14	<b>17</b>
April	8	9	<b>10</b>
May	7	8	
June	8	8	
July	11	10	
August	12	13	
September	16	15	
October	15	16	
November	16	19	
December	21	25	



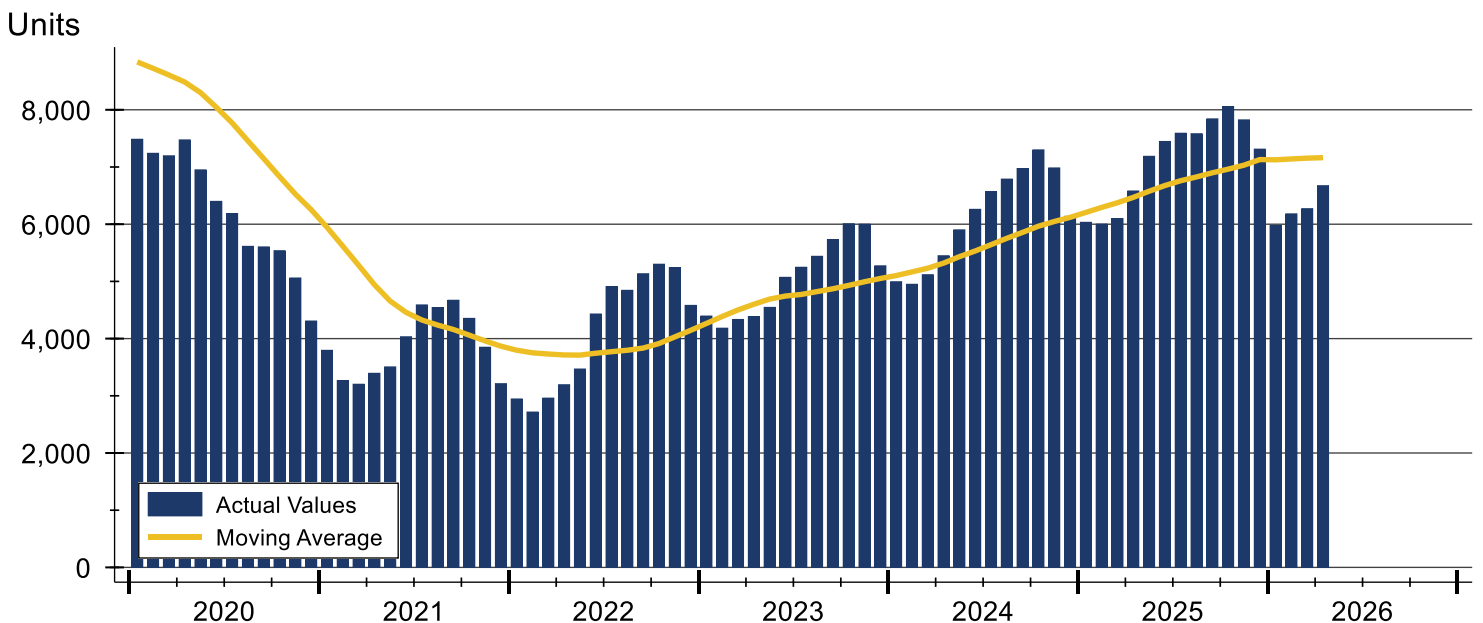
# State of Kansas Active Listings Analysis

Summary Statistics for Active Listings		2026	End of April 2025	Change
Active Listings		<b>6,674</b>	6,581	1.4%
Volume (1,000s)		<b>2,920,196</b>	2,724,178	7.2%
Months' Supply		<b>2.1</b>	2.2	-4.5%
Average	List Price	<b>437,548</b>	413,946	5.7%
	Days on Market	<b>58</b>	71	-18.3%
	Percent of Original	<b>98.1%</b>	98.0%	0.1%
Median	List Price	<b>329,900</b>	310,000	6.4%
	Days on Market	<b>13</b>	30	-56.7%
	Percent of Original	<b>100.0%</b>	100.0%	0.0%

A total of 6,674 homes were available for sale in the state of Kansas at the end of April. This represents a 2.1 months' supply of active listings.

The median list price of homes on the market at the end of April was \$329,900, up 6.4% from 2025. The typical time on market for active listings was 13 days, down from 30 days a year earlier.

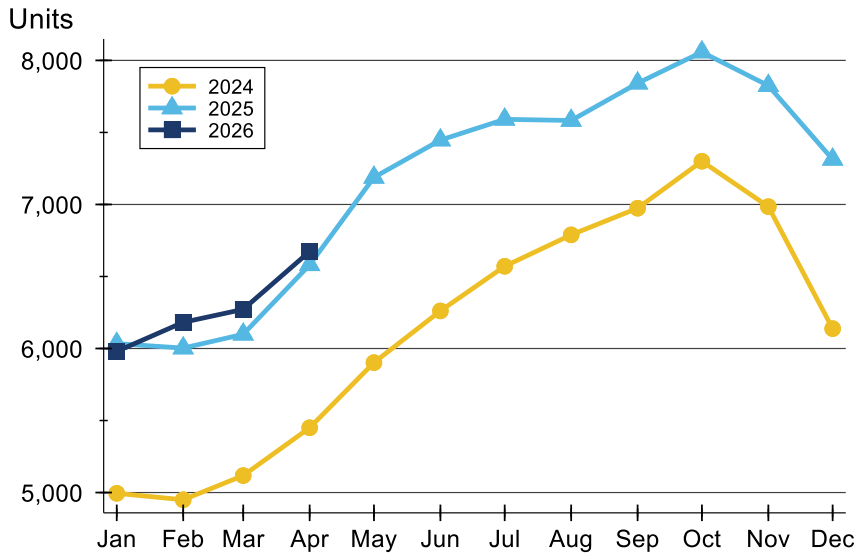
## History of Active Listings





## State of Kansas Active Listings Analysis

### Active Listings by Month



Month	2024	2025	2026
<b>January</b>	4,995	6,034	<b>5,980</b>
<b>February</b>	4,950	6,003	<b>6,182</b>
<b>March</b>	5,118	6,099	<b>6,272</b>
<b>April</b>	5,450	6,581	<b>6,674</b>
<b>May</b>	5,902	7,188	
<b>June</b>	6,261	7,447	
<b>July</b>	6,571	7,591	
<b>August</b>	6,789	7,583	
<b>September</b>	6,974	7,842	
<b>October</b>	7,300	8,058	
<b>November</b>	6,985	7,825	
<b>December</b>	6,138	7,313	

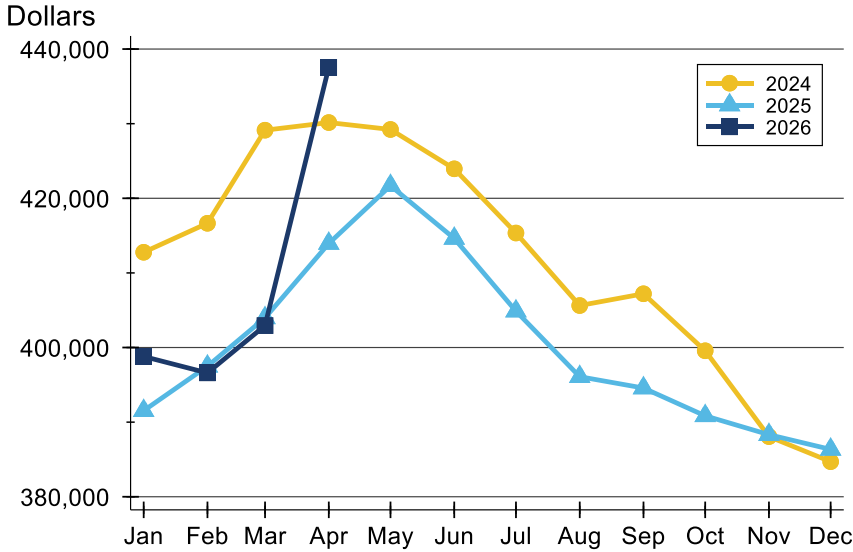
### Active Listings by Price Range

Price Range	Active Listings		Months' Supply	List Price		Days on Market		Price as % of Orig.	
	Number	Percent		Average	Median	Avg.	Med.	Avg.	Med.
Below \$25,000	26	0.4%	1.2	16,461	17,000	71	43	89.8%	100.0%
\$25,000-\$49,999	65	1.0%	1.3	38,920	39,900	72	38	91.9%	100.0%
\$50,000-\$99,999	373	5.6%	1.9	77,762	79,000	72	31	94.7%	100.0%
\$100,000-\$124,999	194	2.9%	1.6	113,884	115,000	47	18	96.6%	100.0%
\$125,000-\$149,999	328	5.0%	1.9	137,084	136,000	56	23	96.9%	100.0%
\$150,000-\$174,999	291	4.4%	1.5	162,217	160,000	55	20	97.9%	100.0%
\$175,000-\$199,999	431	6.5%	2.3	187,399	189,000	54	15	97.7%	100.0%
\$200,000-\$249,999	660	10.0%	1.8	226,973	229,000	54	18	98.2%	100.0%
\$250,000-\$299,999	635	9.6%	1.7	276,763	276,500	48	11	98.4%	100.0%
\$300,000-\$399,999	1,009	15.2%	1.8	350,183	349,900	50	14	98.3%	100.0%
\$400,000-\$499,999	675	10.2%	2.0	453,012	450,000	52	9	99.1%	100.0%
\$500,000-\$749,999	1,129	17.1%	3.2	613,601	605,000	61	7	98.9%	100.0%
\$750,000-\$999,999	438	6.6%	4.2	855,264	849,950	87	5	99.7%	100.0%
\$1,000,000 and up	365	5.5%	4.6	1,690,715	1,418,550	70	8	98.8%	100.0%



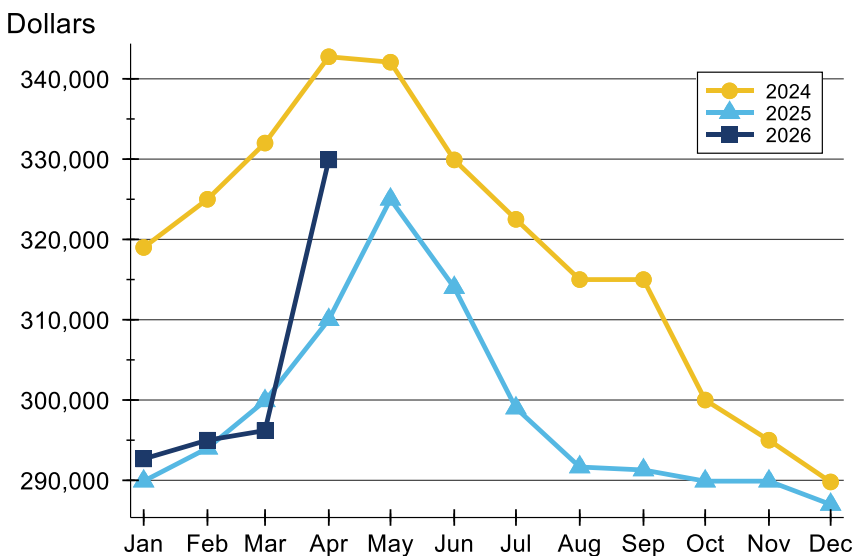
# State of Kansas Active Listings Analysis

## Average Price



Month	2024	2025	2026
January	412,768	391,537	<b>398,802</b>
February	416,652	397,490	<b>396,596</b>
March	429,128	403,970	<b>402,938</b>
April	430,153	413,946	<b>437,548</b>
May	429,225	421,689	
June	423,951	414,620	
July	415,347	404,881	
August	405,629	396,090	
September	407,204	394,573	
October	399,566	390,850	
November	388,062	388,324	
December	384,708	386,346	

## Median Price

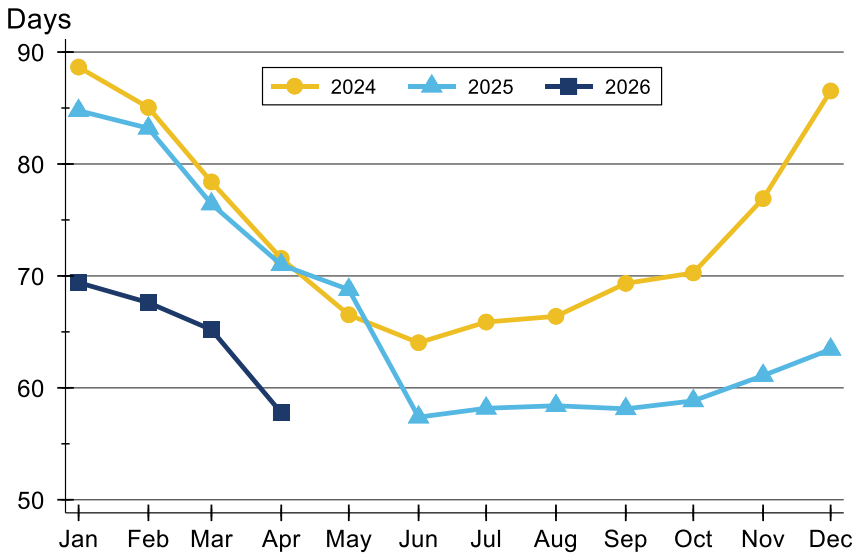


Month	2024	2025	2026
January	319,000	289,900	<b>292,670</b>
February	325,000	294,000	<b>295,000</b>
March	332,000	299,900	<b>296,200</b>
April	342,750	310,000	<b>329,900</b>
May	342,068	325,000	
June	329,900	314,000	
July	322,500	299,000	
August	315,000	291,663	
September	315,000	291,290	
October	300,000	289,900	
November	295,000	289,900	
December	289,800	287,000	



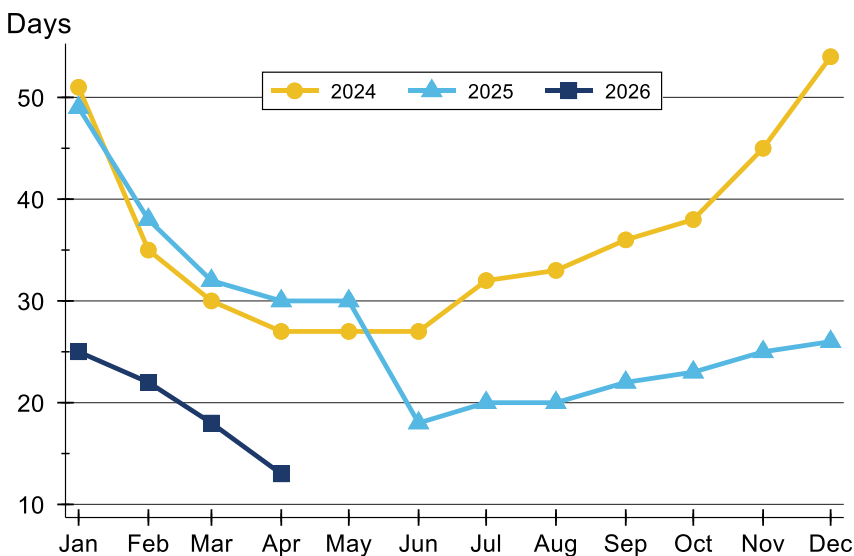
# State of Kansas Active Listings Analysis

## Average DOM



Month	2024	2025	2026
January	89	85	<b>69</b>
February	85	83	<b>68</b>
March	78	76	<b>65</b>
April	72	71	<b>58</b>
May	67	69	
June	64	57	
July	66	58	
August	66	58	
September	69	58	
October	70	59	
November	77	61	
December	87	63	

## Median DOM

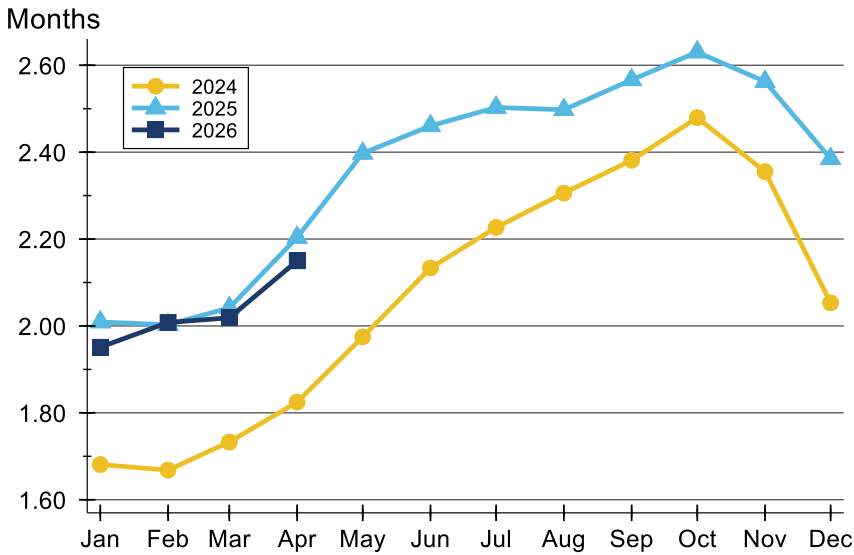


Month	2024	2025	2026
January	51	49	<b>25</b>
February	35	38	<b>22</b>
March	30	32	<b>18</b>
April	27	30	<b>13</b>
May	27	30	
June	27	18	
July	32	20	
August	33	20	
September	36	22	
October	38	23	
November	45	25	
December	54	26	



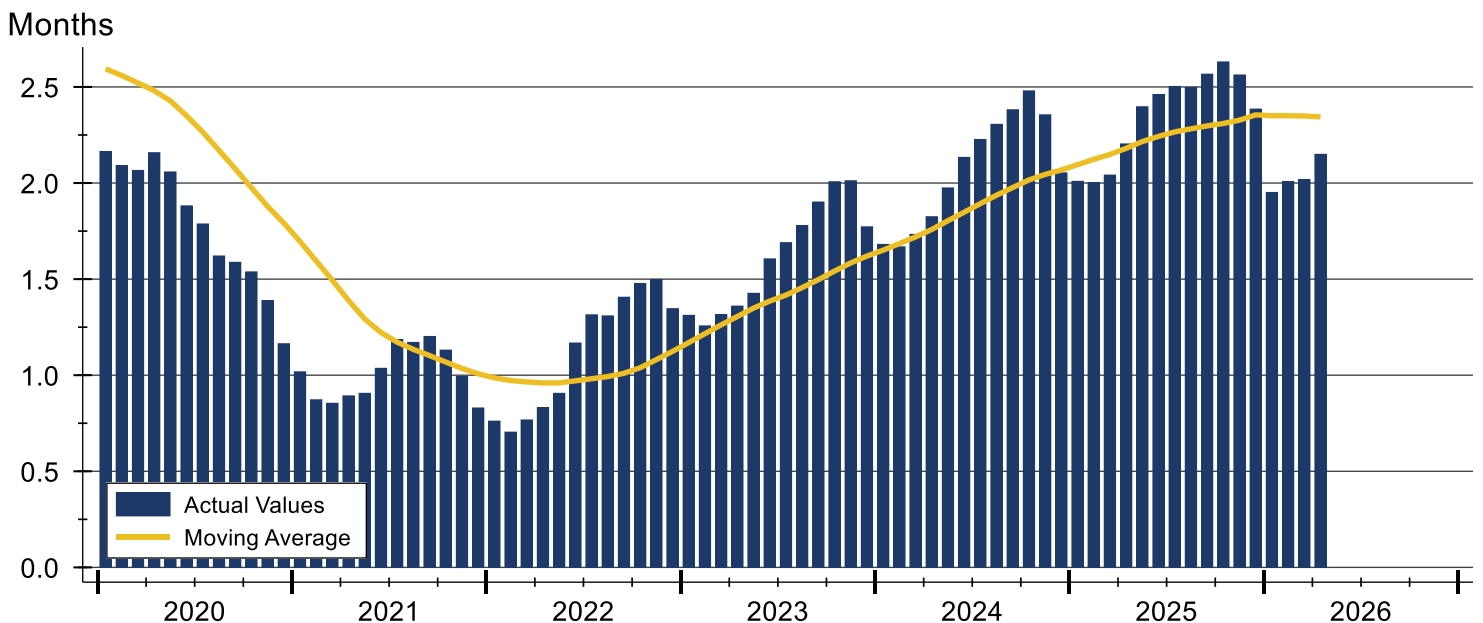
## State of Kansas Months' Supply Analysis

### Months' Supply by Month



Month	2024	2025	2026
January	1.7	2.0	<b>2.0</b>
February	1.7	2.0	<b>2.0</b>
March	1.7	2.0	<b>2.0</b>
April	1.8	2.2	<b>2.1</b>
May	2.0	2.4	
June	2.1	2.5	
July	2.2	2.5	
August	2.3	2.5	
September	2.4	2.6	
October	2.5	2.6	
November	2.4	2.6	
December	2.1	2.4	

### History of Month's Supply





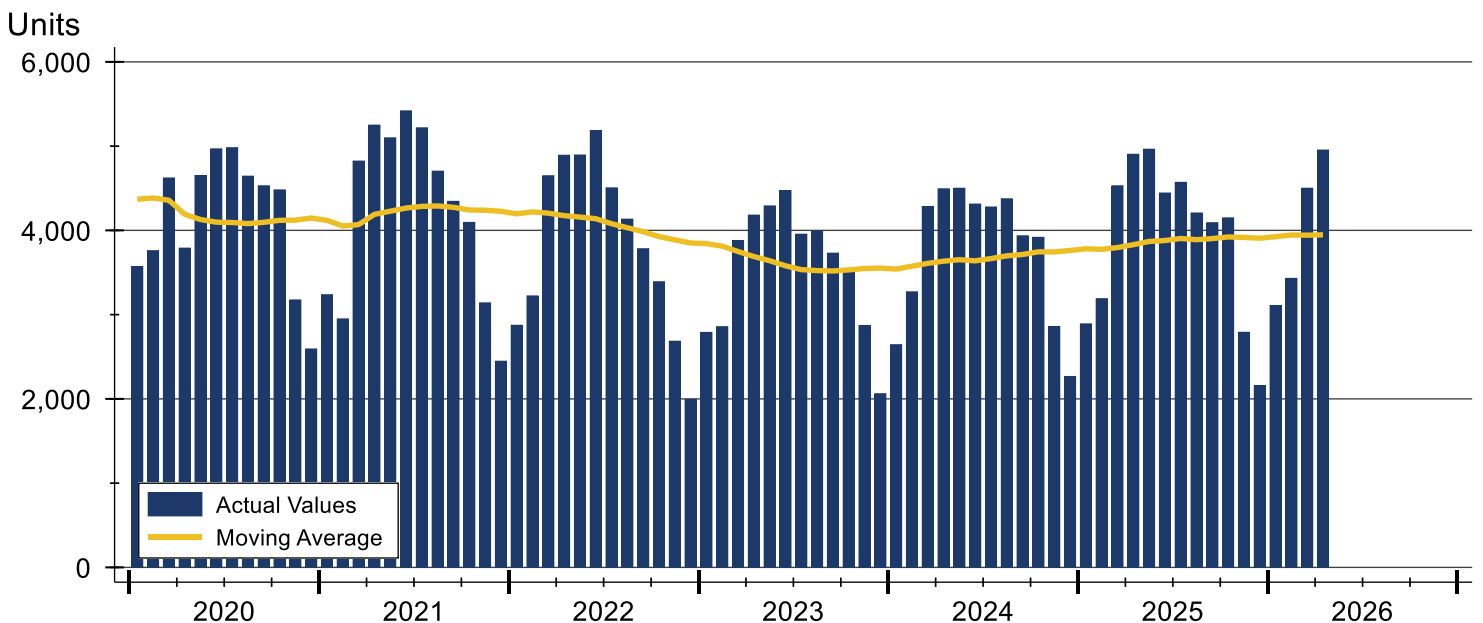
# State of Kansas New Listings Analysis

Summary Statistics for New Listings		2026	April 2025	Change
Current Month	New Listings	<b>4,954</b>	4,904	1.0%
	Volume (1,000s)	<b>1,948,292</b>	1,833,226	6.3%
	Average List Price	<b>393,276</b>	373,823	5.2%
	Median List Price	<b>309,900</b>	295,000	5.1%
Year-to-Date	New Listings	<b>15,995</b>	15,515	3.1%
	Volume (1,000s)	<b>5,994,025</b>	5,549,490	8.0%
	Average List Price	<b>374,744</b>	357,685	4.8%
	Median List Price	<b>299,900</b>	285,000	5.2%

A total of 4,954 new listings were added in the state of Kansas during April, up 1.0% from the same month in 2025. Year-to-date the state of Kansas has seen 15,995 new listings.

The median list price of these homes was \$309,900 up from \$295,000 in 2025.

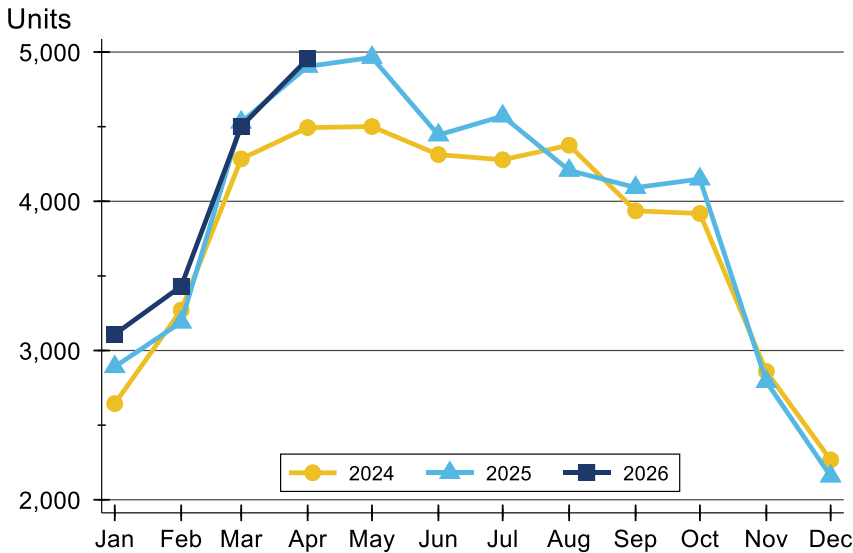
## History of New Listings





## State of Kansas New Listings Analysis

### New Listings by Month



Month	2024	2025	2026
<b>January</b>	2,644	2,891	<b>3,109</b>
<b>February</b>	3,271	3,190	<b>3,431</b>
<b>March</b>	4,284	4,530	<b>4,501</b>
<b>April</b>	4,494	4,904	<b>4,954</b>
<b>May</b>	4,501	4,964	
<b>June</b>	4,313	4,444	
<b>July</b>	4,278	4,571	
<b>August</b>	4,376	4,207	
<b>September</b>	3,936	4,092	
<b>October</b>	3,918	4,149	
<b>November</b>	2,860	2,791	
<b>December</b>	2,267	2,158	

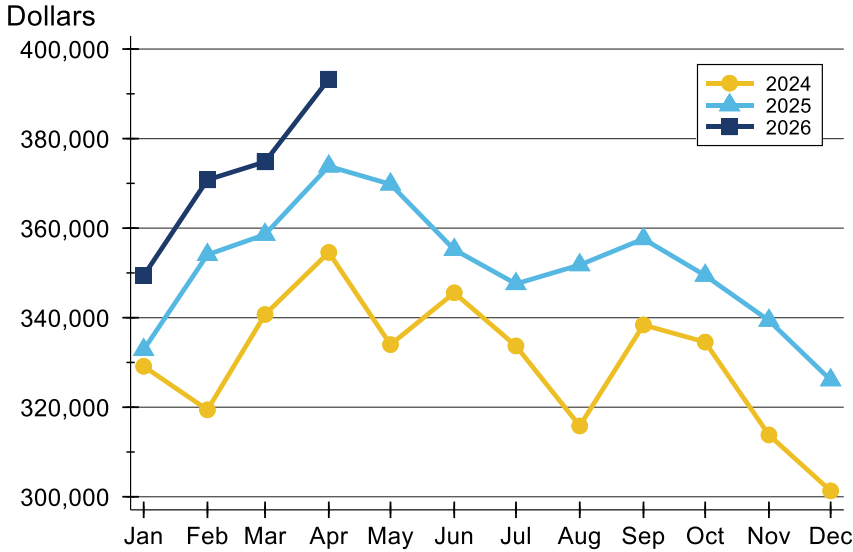
### New Listings by Price Range

Price Range	New Listings		List Price		Days on Market		Price as % of Orig.	
	Number	Percent	Average	Median	Avg.	Med.	Avg.	Med.
Below \$25,000	9	0.2%	17,844	19,500	9	12	97.2%	100.0%
\$25,000-\$49,999	40	0.8%	35,891	35,000	12	12	91.8%	100.0%
\$50,000-\$99,999	211	4.3%	78,016	80,000	11	7	97.9%	100.0%
\$100,000-\$124,999	138	2.8%	113,192	115,000	10	6	98.4%	100.0%
\$125,000-\$149,999	245	5.0%	137,736	139,000	9	5	99.7%	100.0%
\$150,000-\$174,999	258	5.3%	162,319	164,000	10	5	99.3%	100.0%
\$175,000-\$199,999	338	6.9%	187,692	189,500	9	5	99.4%	100.0%
\$200,000-\$249,999	544	11.1%	226,880	225,000	9	4	99.8%	100.0%
\$250,000-\$299,999	597	12.2%	275,387	275,000	9	5	99.7%	100.0%
\$300,000-\$399,999	908	18.5%	349,401	349,900	8	4	99.8%	100.0%
\$400,000-\$499,999	566	11.5%	448,862	449,000	7	3	99.7%	100.0%
\$500,000-\$749,999	623	12.7%	606,112	599,000	7	3	99.6%	100.0%
\$750,000-\$999,999	242	4.9%	844,258	829,388	6	2	99.8%	100.0%
\$1,000,000 and up	184	3.8%	1,708,880	1,485,000	7	2	99.7%	100.0%



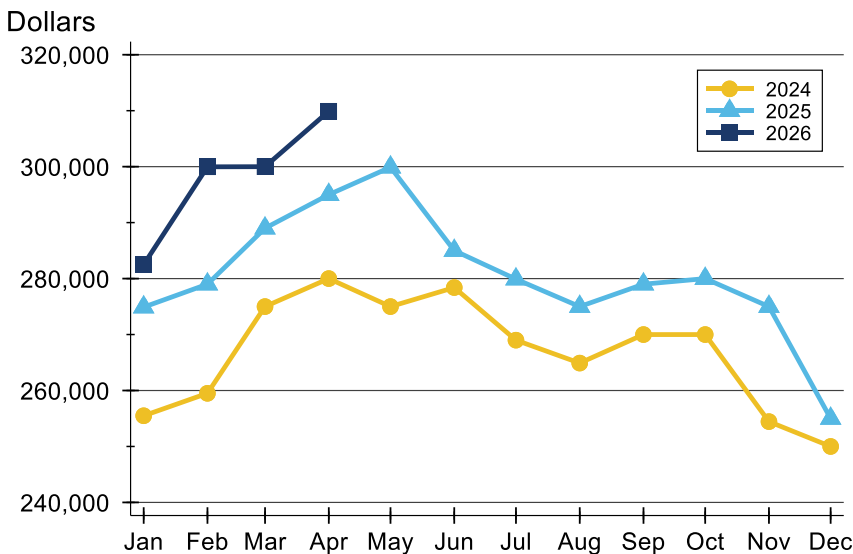
# State of Kansas New Listings Analysis

## Average Price



Month	2024	2025	2026
<b>January</b>	329,134	332,845	<b>349,385</b>
<b>February</b>	319,415	354,061	<b>370,780</b>
<b>March</b>	340,706	358,572	<b>374,808</b>
<b>April</b>	354,583	373,823	<b>393,276</b>
<b>May</b>	333,974	369,800	
<b>June</b>	345,556	355,195	
<b>July</b>	333,681	347,561	
<b>August</b>	315,816	351,783	
<b>September</b>	338,383	357,606	
<b>October</b>	334,544	349,421	
<b>November</b>	313,803	339,371	
<b>December</b>	301,320	326,078	

## Median Price



Month	2024	2025	2026
<b>January</b>	255,490	274,900	<b>282,500</b>
<b>February</b>	259,500	279,000	<b>299,975</b>
<b>March</b>	275,000	289,000	<b>300,000</b>
<b>April</b>	280,000	295,000	<b>309,900</b>
<b>May</b>	275,000	299,900	
<b>June</b>	278,400	285,000	
<b>July</b>	269,000	279,900	
<b>August</b>	264,900	275,000	
<b>September</b>	270,000	279,000	
<b>October</b>	270,000	280,000	
<b>November</b>	254,445	275,000	
<b>December</b>	250,000	255,000	



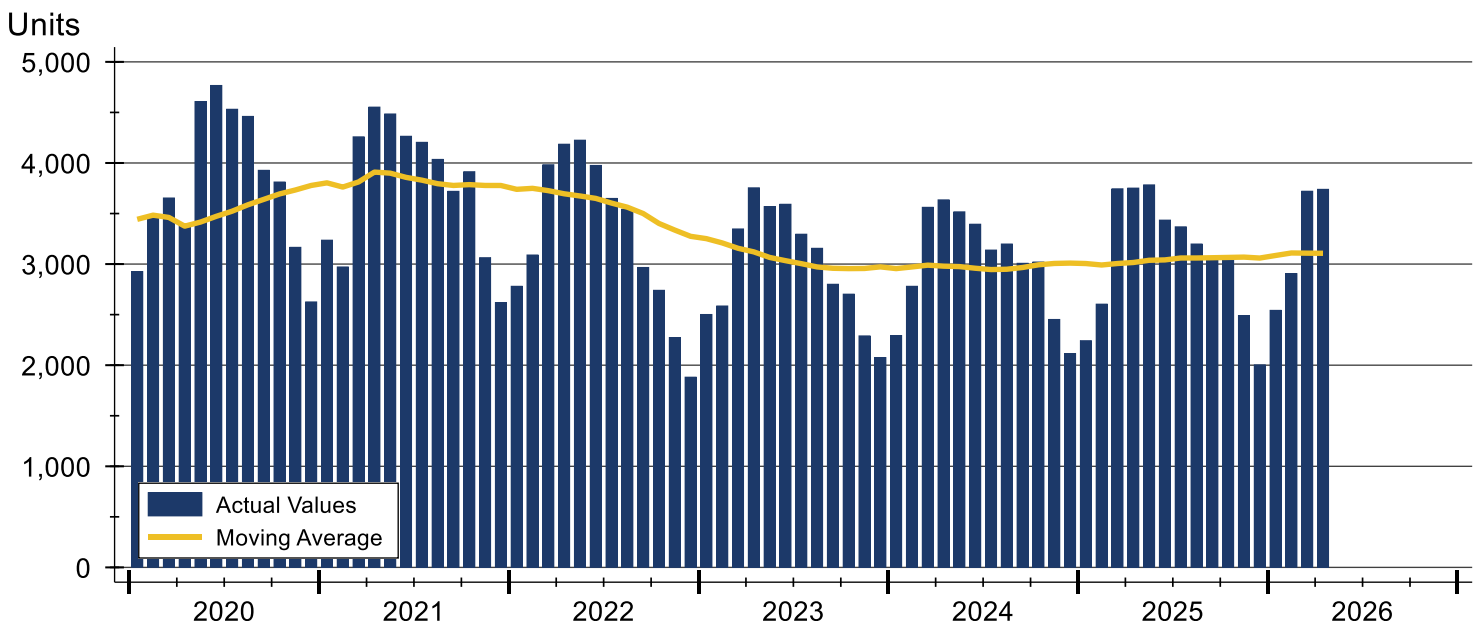
# State of Kansas Contracts Written Analysis

Summary Statistics for Contracts Written		2026	April 2025	Change	Year-to-Date		
		2026	2025		2026	2025	Change
Contracts Written		3,740	3,752	-0.3%	12,910	12,344	4.6%
Volume (1,000s)		1,352,536	1,320,810	2.4%	4,498,832	4,176,176	7.7%
Average	Sale Price	361,641	352,028	2.7%	348,477	338,316	3.0%
	Days on Market	34	35	-2.9%	45	44	2.3%
	Percent of Original	98.4%	98.5%	-0.1%	97.5%	97.7%	-0.2%
Median	Sale Price	290,000	285,000	1.8%	289,500	275,000	5.3%
	Days on Market	7	7	0.0%	12	11	9.1%
	Percent of Original	100.0%	100.0%	0.0%	100.0%	100.0%	0.0%

A total of 3,740 contracts for sale were written in the state of Kansas during the month of April, down from 3,752 in 2025. The median list price of these homes was \$290,000, up from \$285,000 the prior year.

Half of the homes that went under contract in April were on the market less than 7 days, compared to 7 days in April 2025.

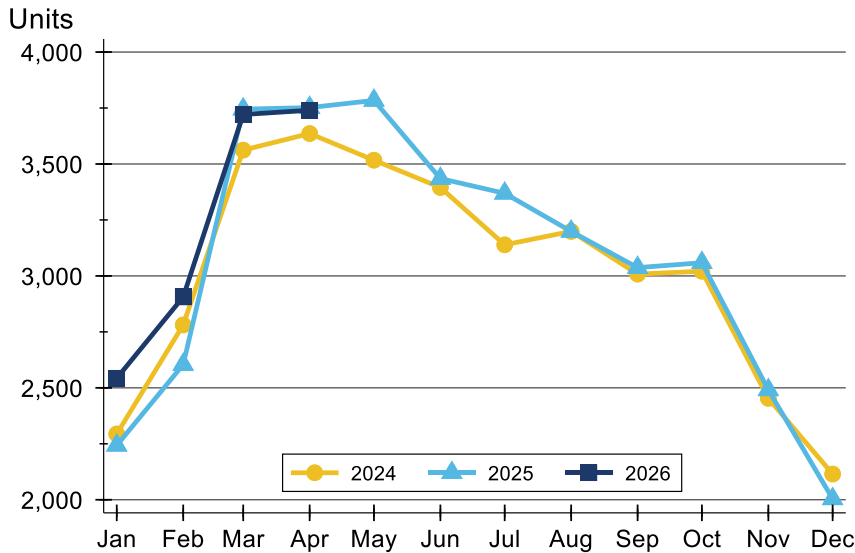
## History of Contracts Written





## State of Kansas Contracts Written Analysis

### Contracts Written by Month



Month	2024	2025	2026
<b>January</b>	2,294	2,243	<b>2,543</b>
<b>February</b>	2,781	2,604	<b>2,906</b>
<b>March</b>	3,562	3,745	<b>3,721</b>
<b>April</b>	3,636	3,752	<b>3,740</b>
<b>May</b>	3,517	3,784	
<b>June</b>	3,395	3,435	
<b>July</b>	3,139	3,369	
<b>August</b>	3,199	3,199	
<b>September</b>	3,008	3,037	
<b>October</b>	3,021	3,059	
<b>November</b>	2,453	2,491	
<b>December</b>	2,115	2,004	

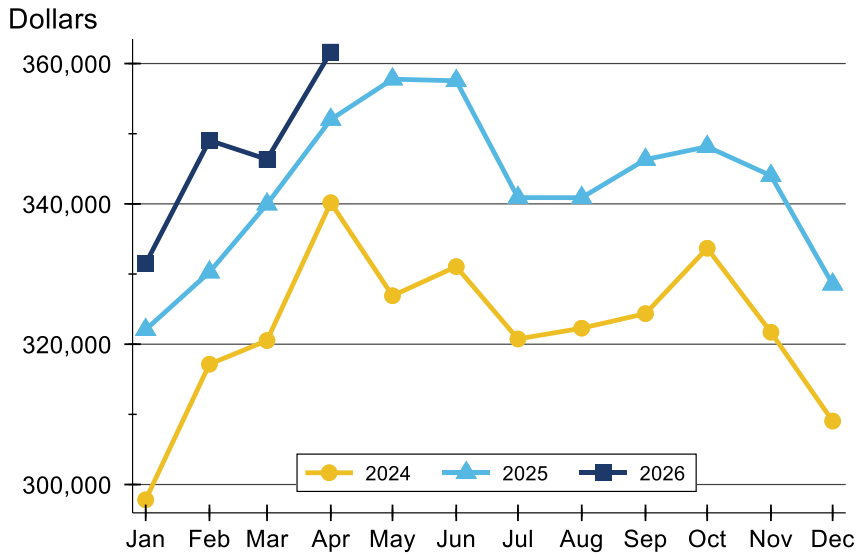
### Contracts Written by Price Range

Price Range	Contracts Written		List Price		Days on Market		Price as % of Orig.	
	Number	Percent	Average	Median	Avg.	Med.	Avg.	Med.
Below \$25,000	11	0.3%	18,709	19,500	41	31	80.5%	81.8%
\$25,000-\$49,999	39	1.1%	35,334	35,000	60	18	94.6%	85.7%
\$50,000-\$99,999	202	5.4%	79,052	80,000	60	21	91.7%	100.0%
\$100,000-\$124,999	107	2.9%	112,718	115,000	45	19	95.1%	100.0%
\$125,000-\$149,999	194	5.2%	138,378	139,900	28	10	98.2%	100.0%
\$150,000-\$174,999	212	5.7%	162,822	165,000	34	9	97.9%	100.0%
\$175,000-\$199,999	262	7.1%	187,561	189,000	43	8	97.9%	100.0%
\$200,000-\$249,999	441	11.9%	227,225	228,950	29	8	98.9%	100.0%
\$250,000-\$299,999	471	12.7%	274,945	275,000	26	6	99.4%	100.0%
\$300,000-\$399,999	665	17.9%	350,646	350,000	27	6	99.4%	100.0%
\$400,000-\$499,999	395	10.6%	446,718	445,000	25	4	99.3%	100.0%
\$500,000-\$749,999	455	12.3%	600,431	595,000	41	8	99.6%	100.0%
\$750,000-\$999,999	153	4.1%	845,566	847,000	40	4	99.1%	100.0%
\$1,000,000 and up	107	2.9%	1,505,696	1,349,000	37	5	98.5%	100.0%



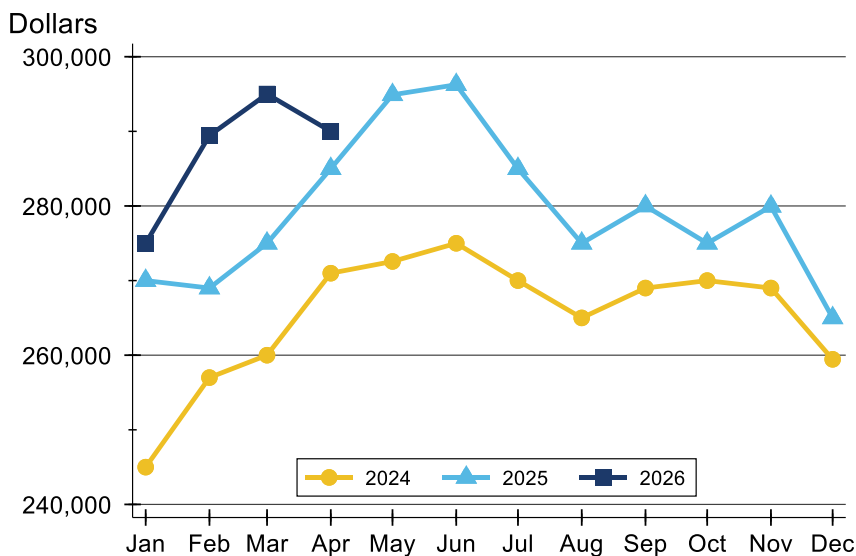
## State of Kansas Contracts Written Analysis

### Average Price



Month	2024	2025	2026
January	297,829	322,074	<b>331,495</b>
February	317,150	330,273	<b>349,048</b>
March	320,524	339,962	<b>346,355</b>
April	340,167	352,028	<b>361,641</b>
May	326,908	357,777	
June	331,063	357,545	
July	320,746	340,895	
August	322,283	340,890	
September	324,361	346,318	
October	333,678	348,156	
November	321,708	344,018	
December	309,049	328,541	

### Median Price

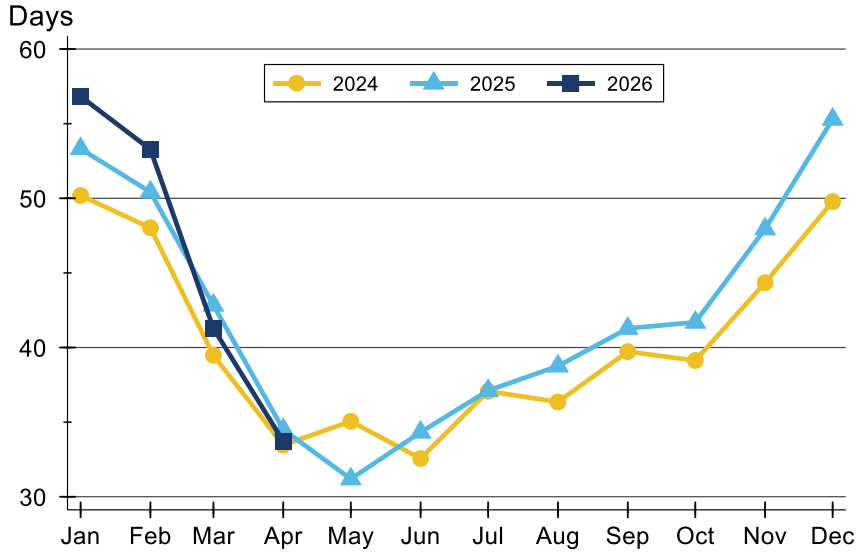


Month	2024	2025	2026
January	245,000	270,000	<b>275,000</b>
February	257,000	269,000	<b>289,440</b>
March	260,000	275,000	<b>295,000</b>
April	270,990	285,000	<b>290,000</b>
May	272,565	294,900	
June	275,000	296,250	
July	270,000	285,000	
August	265,000	275,000	
September	269,000	280,000	
October	270,000	275,000	
November	269,000	279,950	
December	259,450	265,000	



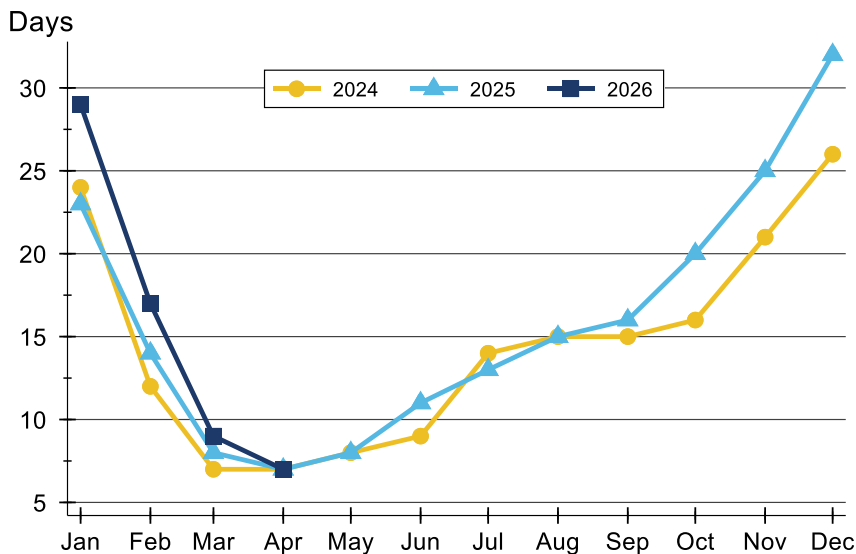
# State of Kansas Contracts Written Analysis

## Average DOM



Month	2024	2025	2026
January	50	53	<b>57</b>
February	48	50	<b>53</b>
March	39	43	<b>41</b>
April	33	35	<b>34</b>
May	35	31	
June	33	34	
July	37	37	
August	36	39	
September	40	41	
October	39	42	
November	44	48	
December	50	55	

## Median DOM



Month	2024	2025	2026
January	24	23	<b>29</b>
February	12	14	<b>17</b>
March	7	8	<b>9</b>
April	7	7	<b>7</b>
May	8	8	
June	9	11	
July	14	13	
August	15	15	
September	15	16	
October	16	20	
November	21	25	
December	26	32	



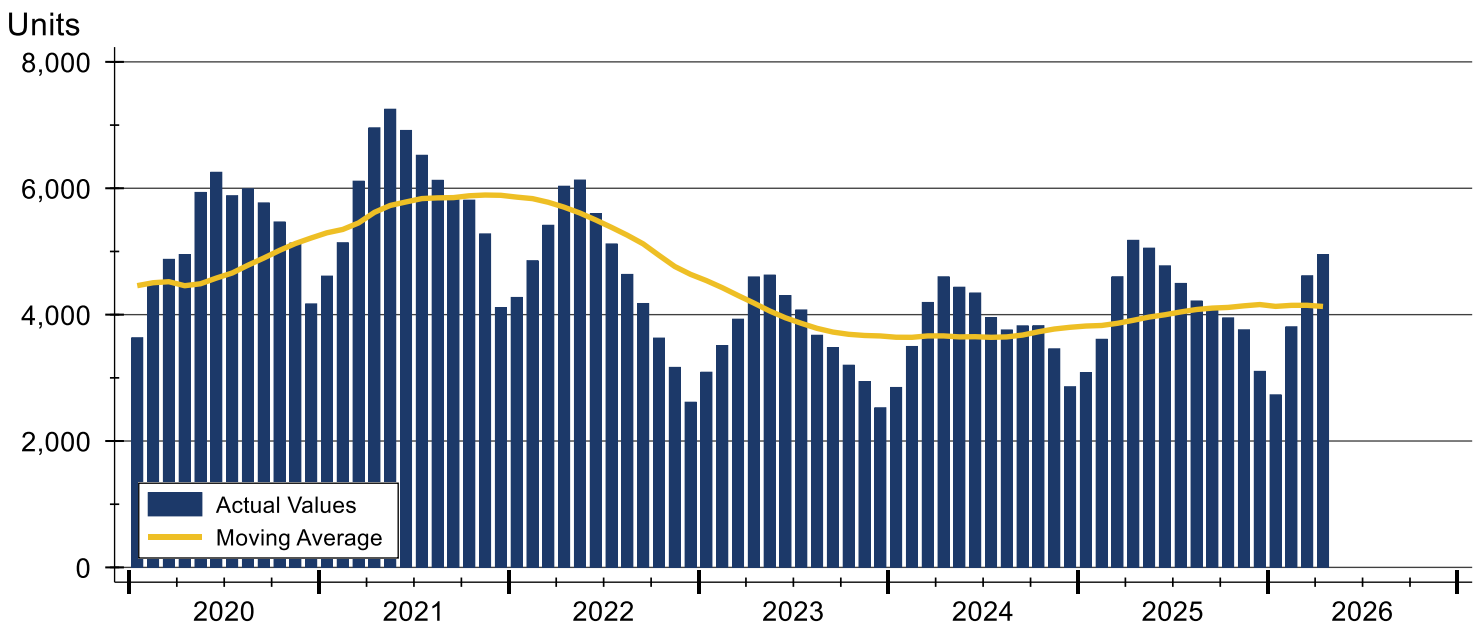
# State of Kansas Pending Contracts Analysis

Summary Statistics for Pending Contracts		2026	End of April 2025	Change
Pending Contracts		4,950	5,177	-4.4%
Volume (1,000s)		2,178,848	2,184,682	-0.3%
Average	List Price	440,171	421,998	4.3%
	Days on Market	38	38	0.0%
	Percent of Original	98.8%	98.9%	-0.1%
Median	List Price	325,000	309,900	4.9%
	Days on Market	7	6	16.7%
	Percent of Original	100.0%	100.0%	0.0%

A total of 4,950 listings in the state of Kansas had contracts pending at the end of April, down from 5,177 contracts pending at the end of April 2025.

Pending contracts reflect listings with a contract in place at the end of the month. In contrast, contracts written measures the number of listings put under contract during the month.

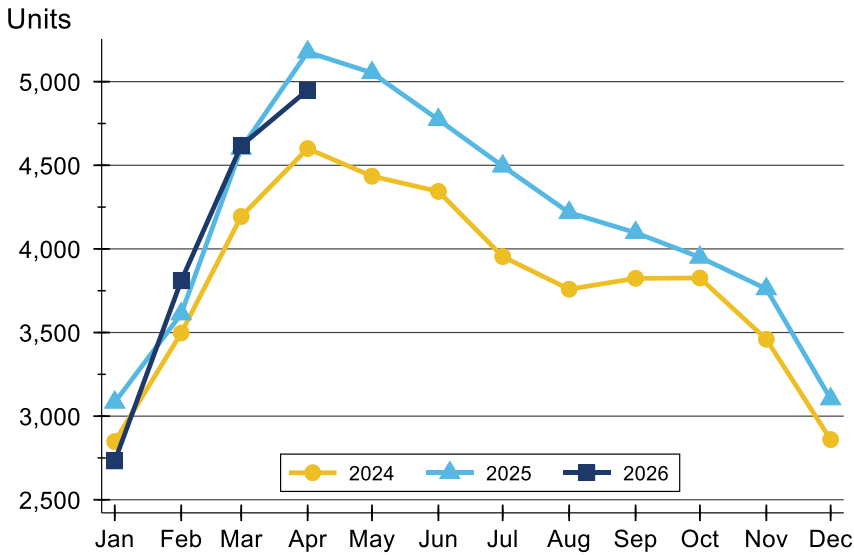
## History of Pending Contracts





## State of Kansas Pending Contracts Analysis

### Pending Contracts by Month



Month	2024	2025	2026
<b>January</b>	2,848	3,083	<b>2,732</b>
<b>February</b>	3,497	3,611	<b>3,809</b>
<b>March</b>	4,194	4,601	<b>4,617</b>
<b>April</b>	4,600	5,177	<b>4,950</b>
<b>May</b>	4,435	5,053	
<b>June</b>	4,344	4,773	
<b>July</b>	3,954	4,495	
<b>August</b>	3,759	4,217	
<b>September</b>	3,824	4,097	
<b>October</b>	3,826	3,950	
<b>November</b>	3,460	3,761	
<b>December</b>	2,860	3,103	

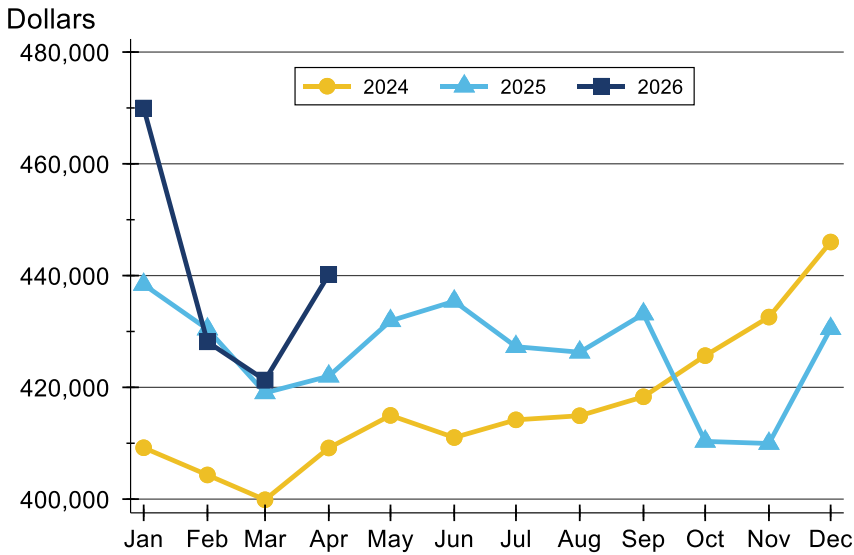
### Pending Contracts by Price Range

Price Range	Pending Contracts		List Price		Days on Market		Price as % of Orig.	
	Number	Percent	Average	Median	Avg.	Med.	Avg.	Med.
Below \$25,000	11	0.2%	18,164	19,500	58	39	81.4%	90.0%
\$25,000-\$49,999	43	0.9%	37,357	38,500	79	49	86.7%	100.0%
\$50,000-\$99,999	196	4.0%	78,524	79,700	69	29	94.3%	100.0%
\$100,000-\$124,999	122	2.5%	113,724	115,000	50	23	95.2%	100.0%
\$125,000-\$149,999	231	4.7%	137,955	139,900	39	15	97.8%	100.0%
\$150,000-\$174,999	227	4.6%	161,958	164,900	42	16	97.7%	100.0%
\$175,000-\$199,999	302	6.1%	186,916	187,500	45	9	98.3%	100.0%
\$200,000-\$249,999	502	10.2%	226,456	225,000	33	9	99.2%	100.0%
\$250,000-\$299,999	578	11.7%	275,355	275,000	28	6	99.5%	100.0%
\$300,000-\$399,999	881	17.9%	348,388	349,000	28	5	99.2%	100.0%
\$400,000-\$499,999	525	10.7%	447,413	447,230	26	4	99.6%	100.0%
\$500,000-\$749,999	728	14.8%	606,255	599,000	47	5	99.6%	100.0%
\$750,000-\$999,999	311	6.3%	852,761	845,095	48	1	99.6%	100.0%
\$1,000,000 and up	270	5.5%	1,819,822	1,328,835	43	1	99.6%	100.0%



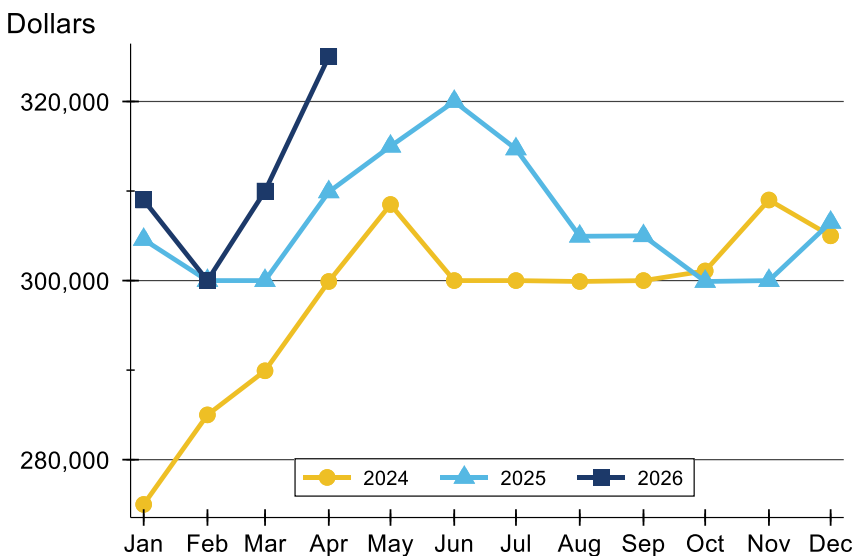
## State of Kansas Pending Contracts Analysis

### Average Price



Month	2024	2025	2026
<b>January</b>	409,196	438,403	<b>469,993</b>
<b>February</b>	404,327	430,427	<b>428,147</b>
<b>March</b>	399,886	419,017	<b>421,297</b>
<b>April</b>	409,158	421,998	<b>440,171</b>
<b>May</b>	414,981	431,914	
<b>June</b>	411,023	435,406	
<b>July</b>	414,188	427,283	
<b>August</b>	414,924	426,291	
<b>September</b>	418,314	433,127	
<b>October</b>	425,679	410,331	
<b>November</b>	432,581	409,955	
<b>December</b>	446,006	430,496	

### Median Price

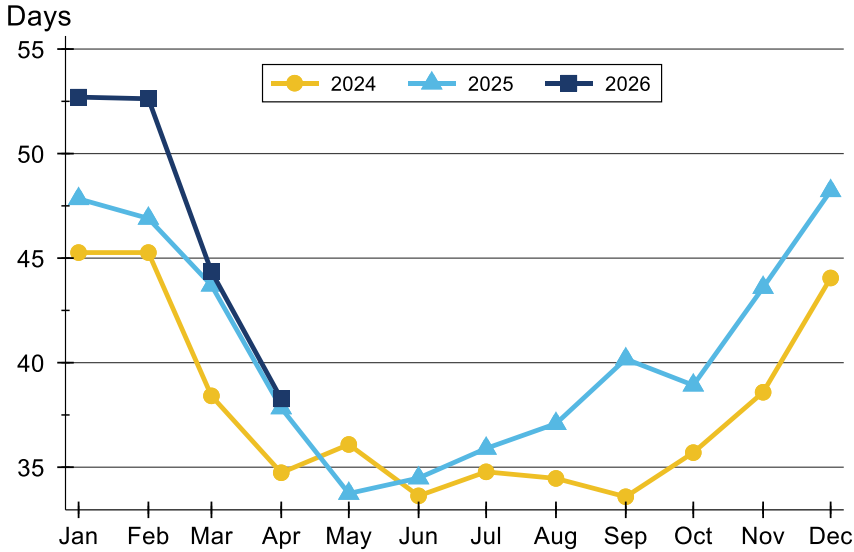


Month	2024	2025	2026
<b>January</b>	275,000	304,590	<b>309,000</b>
<b>February</b>	285,000	300,000	<b>300,000</b>
<b>March</b>	289,925	300,000	<b>310,000</b>
<b>April</b>	299,900	309,900	<b>325,000</b>
<b>May</b>	308,500	315,000	
<b>June</b>	300,000	320,000	
<b>July</b>	300,000	314,700	
<b>August</b>	299,900	304,950	
<b>September</b>	300,000	305,000	
<b>October</b>	301,075	299,900	
<b>November</b>	309,000	300,000	
<b>December</b>	305,000	306,500	



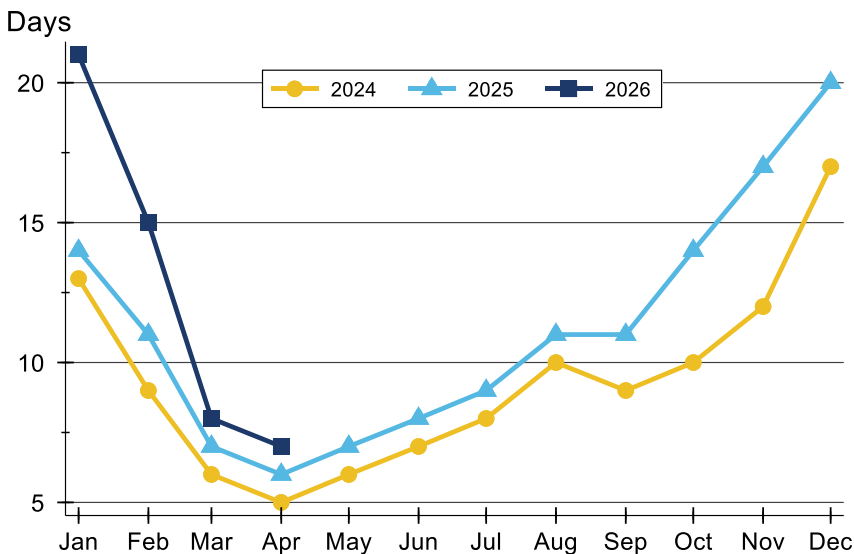
# State of Kansas Pending Contracts Analysis

## Average DOM



Month	2024	2025	2026
January	45	48	<b>53</b>
February	45	47	<b>53</b>
March	38	44	<b>44</b>
April	35	38	<b>38</b>
May	36	34	
June	34	34	
July	35	36	
August	34	37	
September	34	40	
October	36	39	
November	39	44	
December	44	48	

## Median DOM



Month	2024	2025	2026
January	13	14	<b>21</b>
February	9	11	<b>15</b>
March	6	7	<b>8</b>
April	5	6	<b>7</b>
May	6	7	
June	7	8	
July	8	9	
August	10	11	
September	9	11	
October	10	14	
November	12	17	
December	17	20	