

MARKET OVERVIEW >>

Kansas Home Sales Fell in November

Total home sales in the state of Kansas fell last month to 2,219 units, compared to 2,391 units in November 2014. Total sales volume was \$412.7 million, down from a year earlier.

The median sale price in November was \$150,000, up from \$148,000 a year earlier. Homes that sold in November were typically on the market for 40 days and sold for 98.0% of their list prices.

Kansas Active Listings Down at End of November

The total number of active listings in the state of Kansas at the end of November was 11,509 units, down from 13,329 at the same point in 2014. This represents a 5.2 months' supply of homes available for sale. The median list price of homes on the market at the end of November was \$149,500.

During November, a total of 2,028 contracts were written down from 2,136 in November 2014. At the end of the month, there were 3,607 contracts pending, compared to 3,302 at the end of November 2014.

KAR – The Voice of Real Estate in Kansas

The Kansas Association of REALTORS® (KAR) provides members with applications, ideas, knowledge and tools to help them succeed in real estate. Members can learn how to apply technology and productivity tools to grow their business; acquire knowledge about real estate trends, legal issues, legislation and regulation to gain a competitive advantage in the marketplace and connect with the best in the business to share knowledge and experience. This monthly statewide market report is provided so members can deliver the most accurate information to their clients and customers.

Contact Information

Karen Gehle, Chief Executive Officer
 Kansas Association of REALTORS®
 3644 W Burlingame Road
 Topeka, KS 66611
 800-366-0069
ceo@kansasrealtor.com
www.kansasrealtor.com

Entire State of Kansas		November		
Summary Statistics		2015	2014	Change
Home Sales		2,219	2,391	-7.2%
Active Listings		11,509	13,329	-13.7%
Months' Supply		5.2	5.6	-7.0%
New Listings		3,073	3,023	1.7%
Contracts Written		2,028	2,136	-5.1%
Pending Contracts		3,607	3,302	9.2%
Sales Volume (1,000s)		412,688	427,801	-3.5%
Average	Sale Price	185,979	178,921	3.9%
	List Price of Actives	221,794	205,303	8.0%
	Days on Market	67	76	-12.4%
	Percent of List	96.7%	96.6%	0.1%
	Percent of Original	94.0%	93.8%	0.3%
Median	Sale Price	150,000	148,000	1.4%
	List Price of Actives	149,500	142,500	4.9%
	Days on Market	40	46	-13.0%
	Percent of List	98.0%	97.9%	0.0%
	Percent of Original	96.5%	96.1%	0.4%

REPORT CONTENTS >>

- **Market Overview Statistics** – Page 2
- **Year-to-Date Statistics** – Page 3
- **Sold Listings Analysis** – Page 4
- **Active Listings Analysis** – Page 8
- **Months' Supply Analysis** – Page 12
- **New Listings Analysis** – Page 13
- **Contracts Written Analysis** – Page 16
- **Pending Contracts Analysis** – Page 20

MARKET OVERVIEW STATISTICS

SUMMARY >>

ENTIRE STATE OF KANSAS
BREAKDOWNS BY HOME TYPE
AS OF 12/10/2015

November MLS Statistics		2015			2014			2013			
By Property Type		Total	Existing	New	Total	Existing	New	Total	Existing	New	
Home Sales		2,219	2,073	146	2,391	2,192	199	2,501	2,295	206	
	Change from prior year	-7.2%	-5.4%	-26.6%	-4.4%	-4.5%	-3.4%	1.1%	-0.3%	20.5%	
Active Listings		11,509	10,210	1,299	13,329	11,995	1,334	13,824	12,719	1,105	
	Change from prior year	-13.7%	-14.9%	-2.6%	-3.6%	-5.7%	20.7%	-4.9%	-6.5%	17.6%	
Months' Supply		5.2	4.9	8.9	5.6	5.5	6.7	5.5	5.5	5.4	
	Change from prior year	-7.0%	-10.0%	32.7%	0.9%	-1.3%	25.0%	-6.0%	-6.2%	-2.4%	
New Listings		3,073	2,862	211	3,023	2,801	222	3,157	2,959	198	
	Change from prior year	1.7%	2.2%	-5.0%	-4.2%	-5.3%	12.1%	-4.3%	-4.5%	-1.5%	
Contracts Written		2,028	1,888	140	2,136	1,989	147	2,131	1,997	134	
	Change from prior year	-5.1%	-5.1%	-4.8%	0.2%	-0.4%	9.7%	0.1%	1.3%	-15.2%	
Pending Contracts		3,607	2,982	625	3,302	2,741	561	3,338	2,800	538	
	Change from prior year	9.2%	8.8%	11.4%	-1.1%	-2.1%	4.3%	33.1%	37.9%	13.0%	
Sales Volume (1,000s)		412,688	363,748	48,940	427,801	356,174	71,626	436,116	366,092	70,024	
	Change from prior year	-3.5%	2.1%	-31.7%	-1.9%	-2.7%	2.3%	10.4%	7.2%	30.4%	
Average	Sale Price	185,979	175,469	335,206	178,921	162,488	359,931	174,376	159,517	339,922	
		Change from prior year	3.9%	8.0%	-6.9%	2.6%	1.9%	5.9%	9.2%	7.6%	8.2%
	List Price of Actives	221,794	201,816	377,929	205,303	188,781	353,229	191,414	180,927	311,722	
		Change from prior year	8.0%	6.9%	7.0%	7.3%	4.3%	13.3%	2.7%	1.5%	1.7%
	Days on Market	67	65	93	76	75	95	77	78	70	
		Change from prior year	-12.4%	-12.9%	-1.9%	-1.1%	-4.1%	35.3%	-18.1%	-15.9%	-39.9%
Percent of List		96.7%	96.4%	100.8%	96.6%	96.1%	101.7%	96.3%	95.9%	101.1%	
		Change from prior year	0.1%	0.3%	-0.9%	0.2%	0.2%	0.6%	0.9%	0.8%	1.1%
	Percent of Original	94.0%	93.5%	100.9%	93.8%	93.0%	101.9%	93.2%	92.5%	101.4%	
	Change from prior year	0.3%	0.6%	-1.0%	0.6%	0.6%	0.5%	2.4%	2.4%	1.0%	
Median	Sale Price	150,000	144,000	287,618	148,000	136,000	303,950	135,500	127,000	303,470	
		Change from prior year	1.4%	5.9%	-5.4%	9.2%	7.1%	0.2%	2.5%	1.6%	7.8%
	List Price of Actives	149,500	132,000	347,900	142,500	129,900	329,950	134,900	126,000	285,500	
		Change from prior year	4.9%	1.6%	5.4%	5.6%	3.1%	15.6%	3.4%	0.8%	3.9%
	Days on Market	40	41	16	46	47	30	48	49	27	
		Change from prior year	-13.0%	-12.8%	-48.3%	-4.2%	-4.1%	11.1%	-21.3%	-19.7%	-58.5%
Percent of List		98.0%	97.7%	100.0%	97.9%	97.5%	100.0%	97.5%	97.2%	100.1%	
		Change from prior year	0.0%	0.2%	0.0%	0.4%	0.3%	-0.1%	0.2%	0.2%	0.1%
Percent of Original		96.5%	96.0%	100.0%	96.1%	95.6%	100.0%	95.7%	95.2%	100.9%	
		Change from prior year	0.4%	0.4%	0.0%	0.4%	0.5%	-0.9%	1.3%	1.5%	0.9%

YEAR-TO-DATE STATISTICS

SUMMARY >>

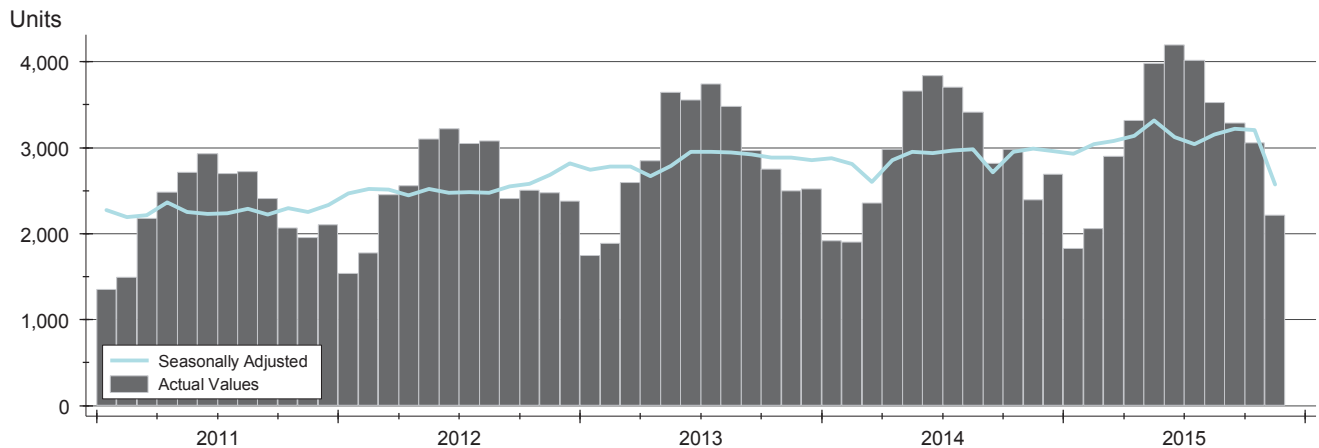
**ENTIRE STATE OF KANSAS
YTD BREAKDOWNS BY HOME TYPE
AS OF 12/10/2015**

Year-to-Date Activity		2015			2014			2013			
By Property Type		Total	Existing	New	Total	Existing	New	Total	Existing	New	
Home Sales		34,380	32,030	2,350	31,969	29,803	2,166	31,719	29,543	2,176	
	Change from prior year	7.5%	7.5%	8.5%	0.8%	0.9%	-0.5%	12.6%	12.2%	19.4%	
New Listings		51,204	48,158	3,046	50,419	47,485	2,934	50,570	47,864	2,706	
	Change from prior year	1.6%	1.4%	3.8%	-0.3%	-0.8%	8.4%	3.4%	3.0%	11.1%	
Contracts Written		35,012	32,556	2,456	32,278	30,090	2,188	32,003	29,739	2,264	
	Change from prior year	8.5%	8.2%	12.2%	0.9%	1.2%	-3.4%	10.9%	11.1%	8.2%	
Sales Volume (1,000s)		6,454,321	5,616,164	838,157	5,643,050	4,892,541	750,509	5,464,261	4,741,005	723,256	
	Change from prior year	14.4%	14.8%	11.7%	3.3%	3.2%	3.8%	20.6%	19.3%	30.3%	
Average	Sale Price	187,735	175,341	356,663	176,527	164,174	346,495	172,276	160,484	332,379	
		Change from prior year	6.3%	6.8%	2.9%	2.5%	2.3%	4.2%	7.1%	6.3%	9.1%
	Days on Market	70	66	124	76	73	110	80	79	104	
		Change from prior year	-7.6%	-9.8%	12.4%	-5.7%	-6.8%	6.3%	-15.0%	-14.5%	-20.6%
Percent of List		97.2%	96.9%	101.4%	96.8%	96.4%	101.6%	96.6%	96.3%	101.3%	
		Change from prior year	0.4%	0.5%	-0.2%	0.2%	0.1%	0.3%	0.8%	0.8%	0.6%
Percent of Original		94.8%	94.3%	101.4%	94.1%	93.6%	101.9%	93.7%	93.1%	101.7%	
		Change from prior year	0.7%	0.8%	-0.5%	0.5%	0.5%	0.2%	2.0%	2.0%	1.4%
Median	Sale Price	155,000	147,500	319,975	145,000	138,500	309,900	142,500	135,000	296,688	
		Change from prior year	6.9%	6.5%	3.3%	1.8%	2.6%	4.5%	5.6%	4.7%	9.9%
	Days on Market	39	38	78	44	44	64	49	49	55	
		Change from prior year	-11.4%	-13.6%	21.9%	-10.2%	-10.2%	16.4%	-16.9%	-15.5%	-27.6%
Percent of List		98.4%	98.1%	100.0%	98.0%	97.8%	100.0%	97.9%	97.6%	100.0%	
		Change from prior year	0.4%	0.3%	0.0%	0.2%	0.2%	0.0%	0.6%	0.6%	0.0%
Percent of Original		97.1%	96.7%	100.0%	96.6%	96.2%	100.3%	96.3%	95.8%	100.4%	
		Change from prior year	0.5%	0.5%	-0.3%	0.4%	0.4%	-0.1%	1.5%	1.5%	0.4%

SOLD LISTINGS ANALYSIS

HISTORY >>

**ENTIRE STATE OF KANSAS
ALL HOMES
AS OF 12/10/2015**



SUMMARY >>

Summary Statistics for Sold Listings		November			Year-to-Date		
		2015	2014	Change	2015	2014	Change
Sold Listings		2,219	2,391	-7.2%	34,380	31,969	7.5%
Volume (1,000s)		412,688	427,801	-3.5%	6,454,321	5,643,050	14.4%
Average	Sale Price	185,979	178,921	3.9%	187,735	176,527	6.3%
	Days on Market	67	76	-12.4%	70	76	-7.6%
	Percent of List	96.7%	96.6%	0.1%	97.2%	96.8%	0.4%
	Percent of Original	94.0%	93.8%	0.3%	94.8%	94.1%	0.7%
Median	Sale Price	150,000	148,000	1.4%	155,000	145,000	6.9%
	Days on Market	40	46	-13.0%	39	44	-11.4%
	Percent of List	98.0%	97.9%	0.0%	98.4%	98.0%	0.4%
	Percent of Original	96.5%	96.1%	0.4%	97.1%	96.6%	0.5%

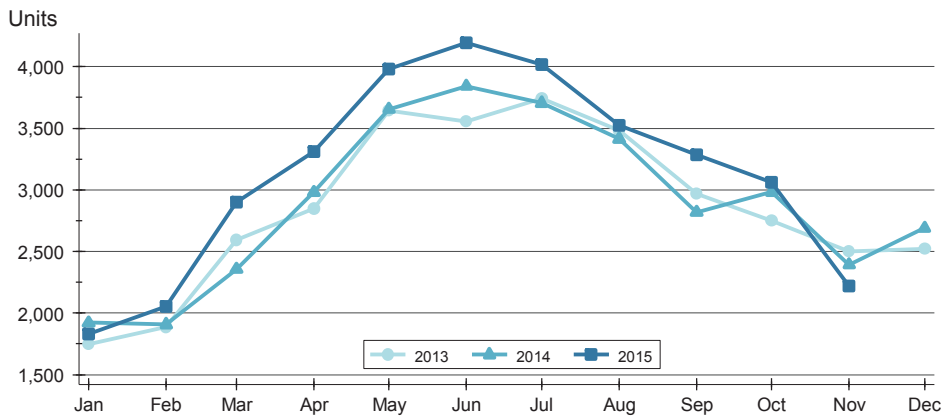
A total of 2,219 homes sold in the state of Kansas in November, down from 2,391 units in November 2014. Total sales volume fell to \$412.7 million compared to \$427.8 million in the previous year.

The median sales price in November was \$150,000, up 1.4% compared to the prior year. Median days on market was 40 days, up from 37 days in October, but down from 46 in November 2014.

SOLD LISTINGS ANALYSIS

**ENTIRE STATE OF KANSAS
ALL HOMES
AS OF 12/10/2015**

BY MONTH »



Month	2013	2014	2015
January	1,748	1,921	1,832
February	1,886	1,906	2,056
March	2,594	2,355	2,901
April	2,848	2,981	3,313
May	3,644	3,656	3,980
June	3,556	3,841	4,194
July	3,740	3,704	4,017
August	3,480	3,414	3,523
September	2,970	2,818	3,286
October	2,752	2,982	3,059
November	2,501	2,391	2,219
December	2,519	2,690	-

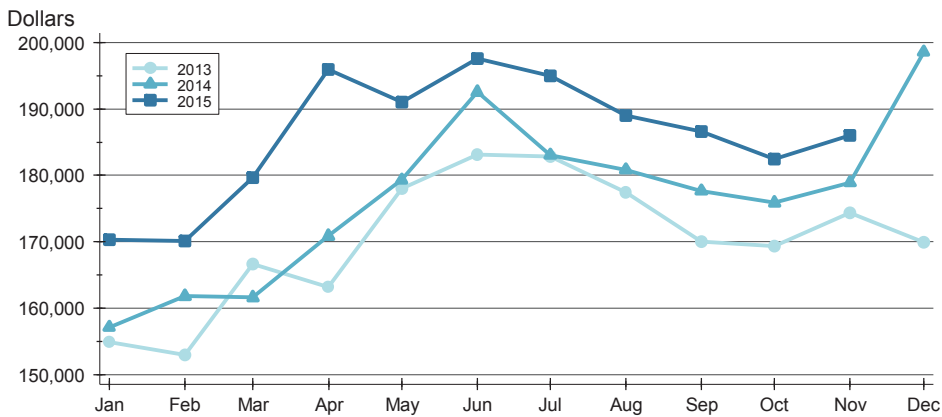
BY PRICE RANGE »

Price Range	Sales			Sale Price		Days on Market		Price as % of List		Price as % of Orig.	
	Number	Percent	Volume	Average	Median	Average	Median	Average	Median	Average	Median
Below \$25,000	87	3.9%	1,327	15,257	15,000	89	49	83.8%	89.3%	75.3%	80.3%
\$25,000-\$49,999	166	7.5%	6,159	37,102	36,313	74	45	92.7%	92.1%	85.4%	86.2%
\$50,000-\$99,999	394	17.8%	29,381	74,572	75,000	79	52	95.6%	97.0%	92.3%	93.9%
\$100,000-\$124,999	199	9.0%	22,385	112,488	113,140	72	38	96.3%	97.1%	94.2%	95.9%
\$125,000-\$149,999	252	11.4%	34,301	136,114	135,000	57	35	97.8%	98.6%	95.6%	97.3%
\$150,000-\$174,999	203	9.1%	32,724	161,201	160,000	56	38	98.0%	98.6%	96.4%	97.2%
\$175,000-\$199,999	154	6.9%	28,653	186,058	185,000	55	29	98.1%	98.6%	96.4%	97.3%
\$200,000-\$249,999	246	11.1%	54,800	222,765	220,750	53	32	98.4%	98.5%	97.1%	97.8%
\$250,000-\$299,999	185	8.3%	50,333	272,069	271,500	51	31	98.9%	99.3%	97.3%	98.6%
\$300,000 and up	333	15.0%	152,625	458,333	395,000	78	46	98.0%	97.8%	96.0%	97.1%
All price ranges	2,219	100.0%	412,688	185,979	150,000	67	40	96.7%	98.0%	94.0%	96.5%

SOLD LISTINGS ANALYSIS

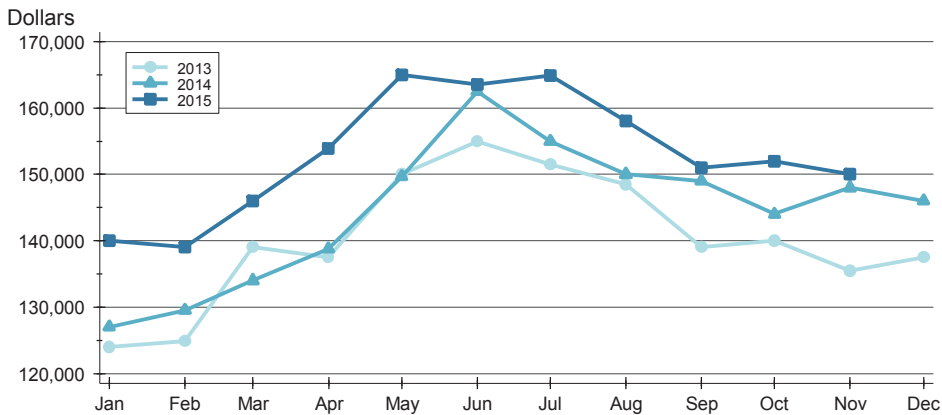
**ENTIRE STATE OF KANSAS
ALL HOMES
AS OF 12/10/2015**

AVERAGE PRICE >>



Month	2013	2014	2015
January	154,846	157,086	170,338
February	152,927	161,784	170,142
March	166,612	161,583	179,684
April	163,209	170,863	195,920
May	178,003	179,323	191,039
June	183,132	192,558	197,619
July	182,882	183,031	195,007
August	177,413	180,818	188,982
September	169,977	177,664	186,560
October	169,380	175,877	182,447
November	174,376	178,921	185,979
December	169,909	198,553	

MEDIAN PRICE >>

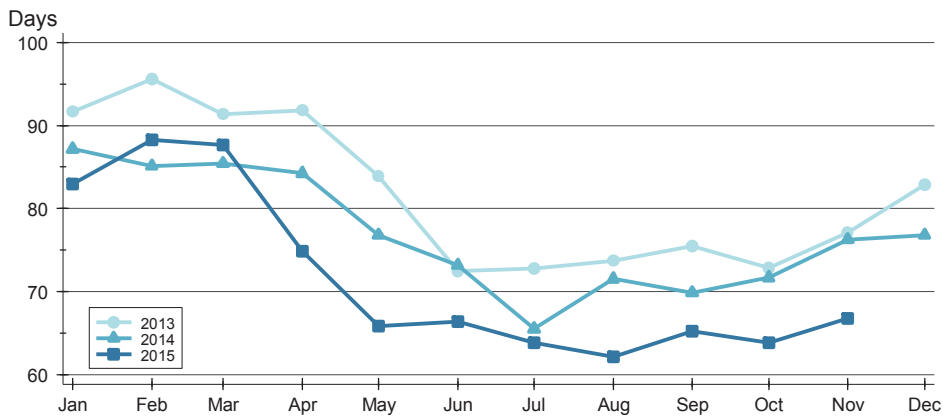


Month	2013	2014	2015
January	124,000	127,000	140,000
February	124,900	129,500	139,000
March	139,000	134,000	146,000
April	137,500	138,800	153,898
May	150,000	149,700	165,000
June	155,000	162,500	163,500
July	151,500	155,000	164,900
August	148,500	150,000	158,000
September	139,000	149,000	151,000
October	140,000	144,017	152,000
November	135,500	148,000	150,000
December	137,500	146,000	

SOLD LISTINGS ANALYSIS

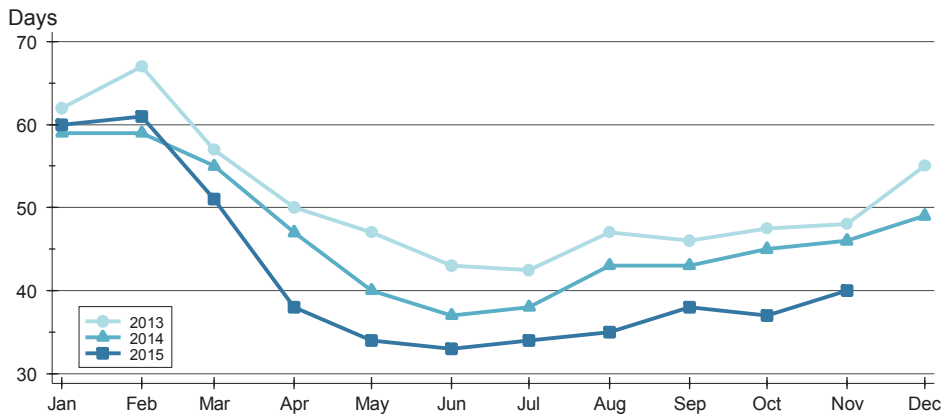
**ENTIRE STATE OF KANSAS
ALL HOMES
AS OF 12/10/2015**

AVERAGE DOM >>



Month	2013	2014	2015
January	92	87	83
February	96	85	88
March	91	85	88
April	92	84	75
May	84	77	66
June	72	73	66
July	73	65	64
August	74	72	62
September	75	70	65
October	73	72	64
November	77	76	67
December	83	77	

MEDIAN DOM >>

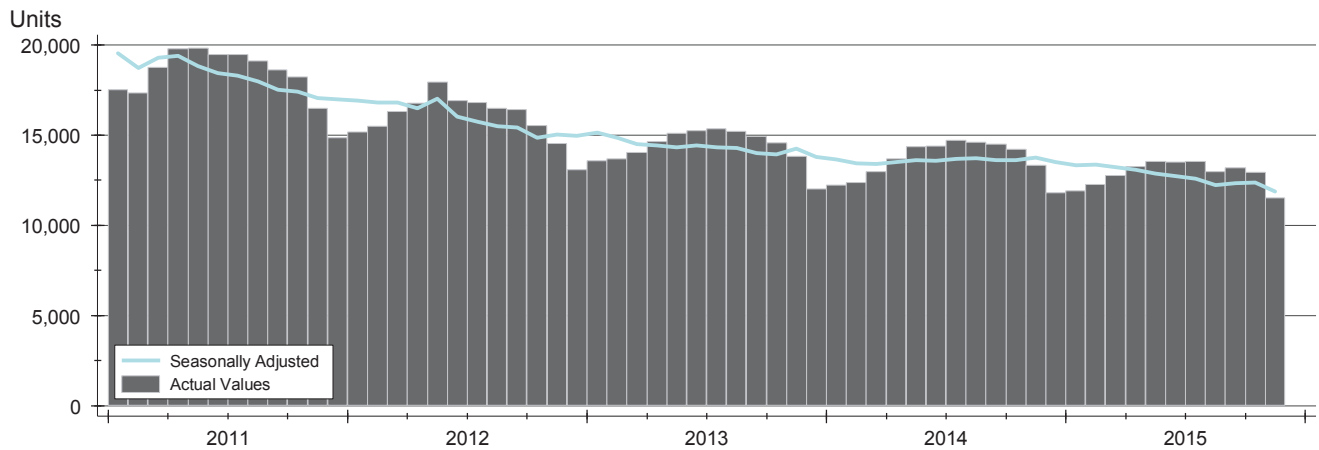


Month	2013	2014	2015
January	62	59	60
February	67	59	61
March	57	55	51
April	50	47	38
May	47	40	34
June	43	37	33
July	43	38	34
August	47	43	35
September	46	43	38
October	48	45	37
November	48	46	40
December	55	49	

ACTIVE LISTINGS ANALYSIS

**ENTIRE STATE OF KANSAS
ALL HOMES
AS OF 12/10/2015**

HISTORY >>



SUMMARY >>

Summary Statistics for Active Listings		End of November		
		2015	2014	Change
Active Listings		11,509	13,329	-13.7%
Months' Supply		5.2	5.6	-7.0%
Volume (1,000s)		2,552,626	2,736,481	-6.7%
Average	List Price	221,794	205,303	8.0%
	Days on Market	123	121	1.4%
	Percent of Original	97.0%	97.1%	-0.1%
Median	List Price	149,500	142,500	4.9%
	Days on Market	82	83	-1.2%
	Percent of Original	100.0%	100.0%	0.0%

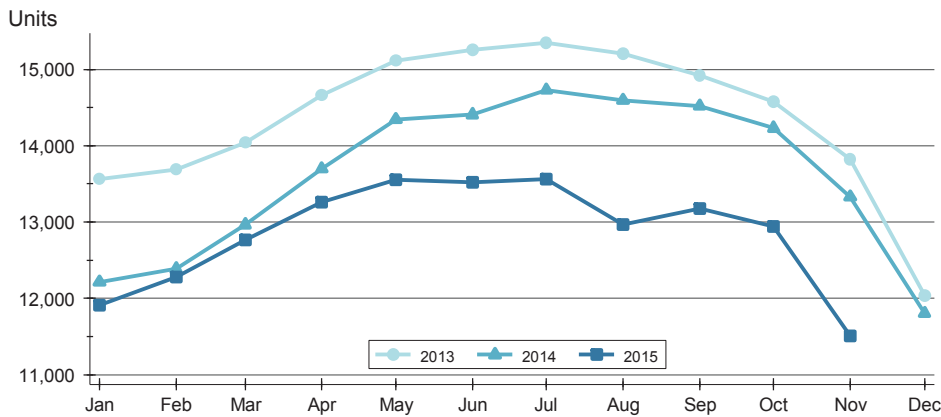
A total of 11,509 homes were available for sale in the state of Kansas at the end of November. This represents a 5.2 months' supply of active listings.

The median list price of homes on the market at the end of November was \$149,500, up 4.9% from 2014. The typical time on market for active listings was 82 days, down from 83 days a year earlier.

ACTIVE LISTINGS ANALYSIS

BY MONTH >>

**ENTIRE STATE OF KANSAS
ALL HOMES
AS OF 12/10/2015**



Month	2013	2014	2015
January	13,564	12,215	11,914
February	13,690	12,385	12,281
March	14,044	12,965	12,762
April	14,658	13,699	13,261
May	15,111	14,347	13,558
June	15,255	14,409	13,518
July	15,349	14,732	13,559
August	15,205	14,595	12,966
September	14,924	14,519	13,177
October	14,576	14,232	12,942
November	13,824	13,329	11,509
December	12,035	11,802	

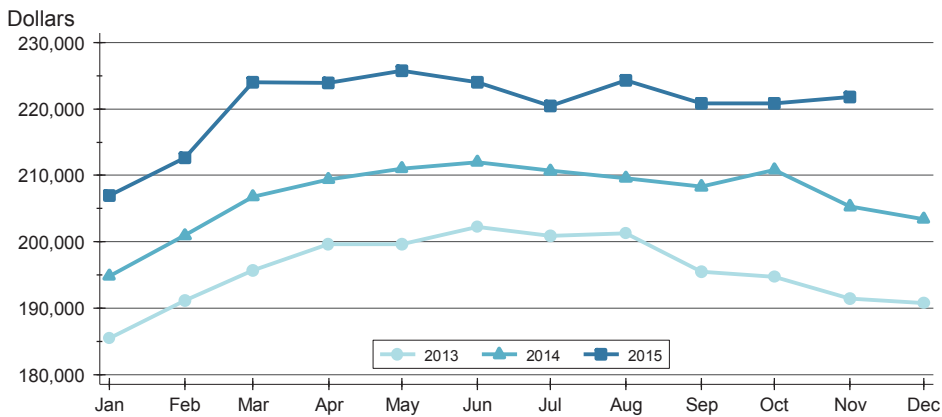
BY PRICE RANGE >>

Price Range	Active Listings			Months' Supply	List Price		Days on Market		List as % Orig.	
	Number	Percent	Volume		Average	Median	Average	Median	Average	Median
Below \$25,000	283	2.5%	4,063	3.3	14,356	16,900	116	68	90.9%	100.0%
\$25,000-\$49,999	931	8.1%	36,056	5.6	38,728	39,500	131	84	93.8%	100.0%
\$50,000-\$99,999	2,693	23.4%	202,271	6.8	75,110	75,000	128	85	96.2%	100.0%
\$100,000-\$124,999	859	7.5%	97,793	4.3	113,845	114,900	109	77	97.0%	100.0%
\$125,000-\$149,999	1,037	9.0%	141,900	4.1	136,837	135,000	101	68	97.4%	100.0%
\$150,000-\$174,999	750	6.5%	121,808	3.7	162,411	162,000	93	70	97.9%	100.0%
\$175,000-\$199,999	749	6.5%	140,657	4.9	187,794	189,000	108	73	97.8%	100.0%
\$200,000-\$249,999	963	8.4%	218,298	3.9	226,685	225,000	110	73	98.2%	100.0%
\$250,000-\$299,999	787	6.8%	216,937	4.3	275,651	275,000	113	73	98.2%	100.0%
\$300,000 and up	2,399	20.8%	1,359,979	7.2	566,894	425,000	154	105	98.4%	100.0%
All price ranges	11,509	100.0%	2,552,626	5.2	221,794	149,500	123	82	97.0%	100.0%

ACTIVE LISTINGS ANALYSIS

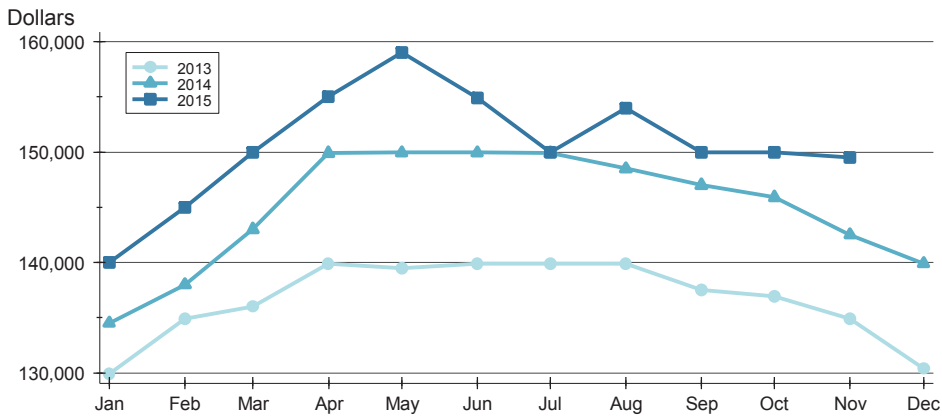
**ENTIRE STATE OF KANSAS
ALL HOMES
AS OF 12/10/2015**

AVERAGE PRICE »



Month	2013	2014	2015
January	185,419	194,853	206,961
February	191,090	200,931	212,601
March	195,696	206,758	223,990
April	199,644	209,388	223,898
May	199,638	211,043	225,786
June	202,230	212,019	224,043
July	200,892	210,669	220,470
August	201,225	209,606	224,326
September	195,472	208,291	220,864
October	194,686	210,813	220,851
November	191,414	205,303	221,794
December	190,772	203,419	

MEDIAN PRICE »

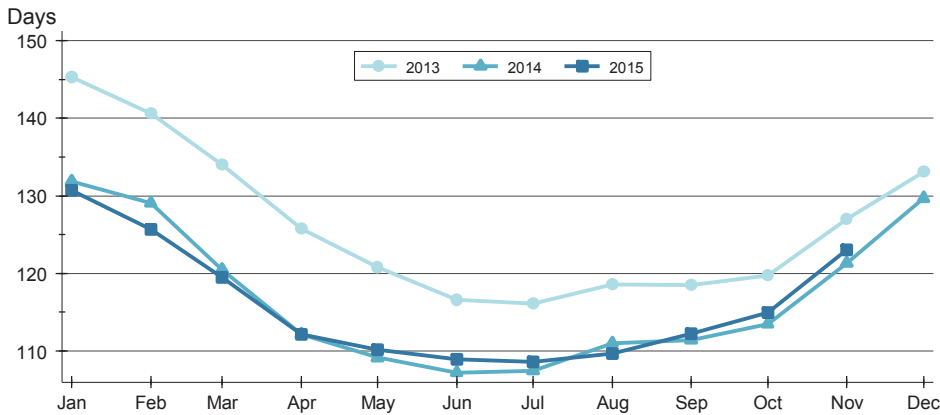


Month	2013	2014	2015
January	129,950	134,500	140,000
February	134,900	138,000	145,000
March	136,000	143,000	150,000
April	139,900	149,900	155,000
May	139,500	149,950	159,000
June	139,900	149,950	154,900
July	139,900	149,900	150,000
August	139,900	148,500	153,950
September	137,500	147,000	150,000
October	136,950	145,900	150,000
November	134,900	142,500	149,500
December	130,400	139,900	

ACTIVE LISTINGS ANALYSIS

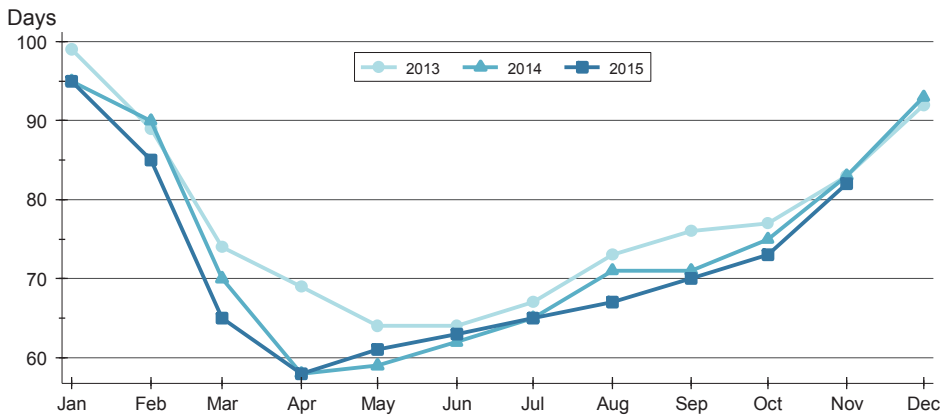
**ENTIRE STATE OF KANSAS
ALL HOMES
AS OF 12/10/2015**

AVERAGE DOM >>



Month	2013	2014	2015
January	145	132	131
February	141	129	126
March	134	120	119
April	126	112	112
May	121	109	110
June	117	107	109
July	116	107	109
August	119	111	110
September	119	111	112
October	120	113	115
November	127	121	123
December	133	130	

MEDIAN DOM >>

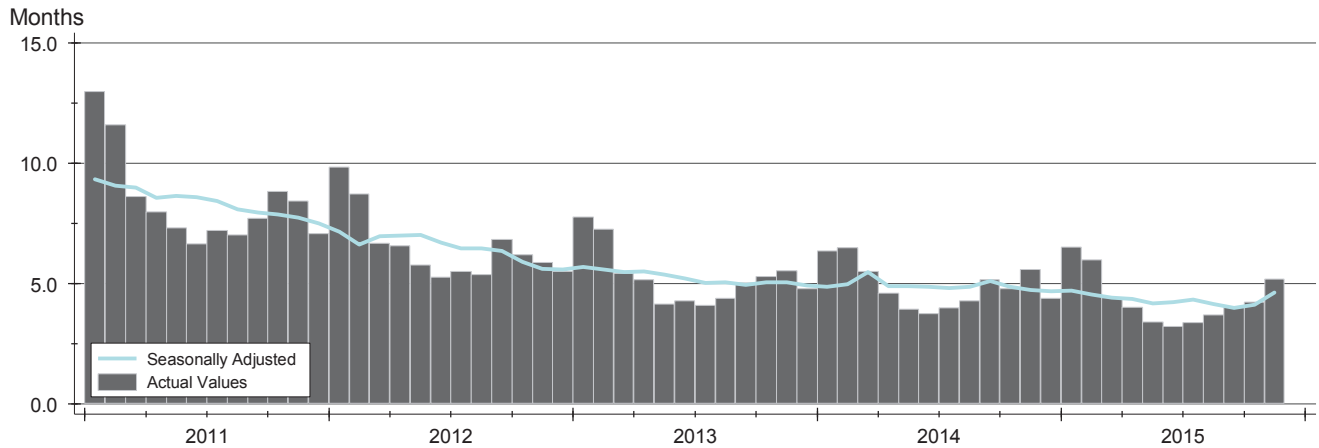


Month	2013	2014	2015
January	99	95	95
February	89	90	85
March	74	70	65
April	69	58	58
May	64	59	61
June	64	62	63
July	67	65	65
August	73	71	67
September	76	71	70
October	77	75	73
November	83	83	82
December	92	93	

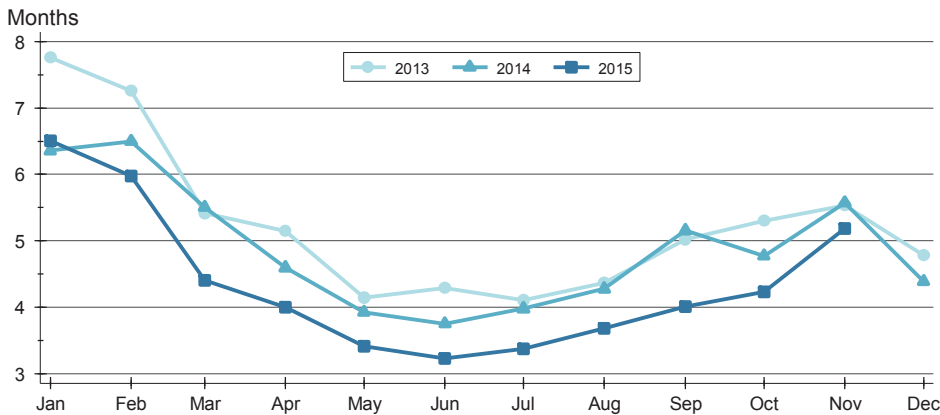
MONTHS' SUPPLY ANALYSIS

**ENTIRE STATE OF KANSAS
ALL HOMES
AS OF 12/10/2015**

HISTORY >>



BY MONTH >>

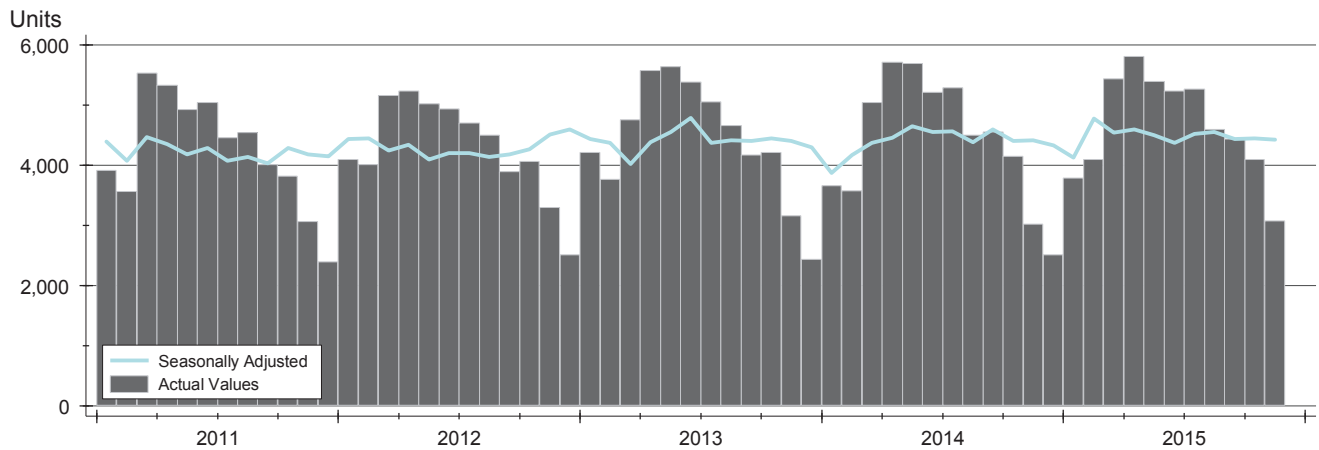


Month	2013	2014	2015
January	7.8	6.4	6.5
February	7.3	6.5	6.0
March	5.4	5.5	4.4
April	5.1	4.6	4.0
May	4.1	3.9	3.4
June	4.3	3.8	3.2
July	4.1	4.0	3.4
August	4.4	4.3	3.7
September	5.0	5.2	4.0
October	5.3	4.8	4.2
November	5.5	5.6	5.2
December	4.8	4.4	

NEW LISTINGS ANALYSIS

**ENTIRE STATE OF KANSAS
ALL HOMES
AS OF 12/10/2015**

HISTORY >>



SUMMARY >>

Summary Statistics for New Listings		November		
		2015	2014	Change
Current Month	New Listings	3,073	3,023	1.7%
	Volume (1,000s)	569,484	535,446	6.4%
	Average List Price	185,319	177,124	4.6%
	Median List Price	137,500	135,000	1.9%
YTD	New Listings	51,204	50,419	1.6%
	Volume (1,000s)	#####	9,508,097	5.7%
	Average List Price	196,246	188,582	4.1%
	Median List Price	154,900	147,000	5.4%

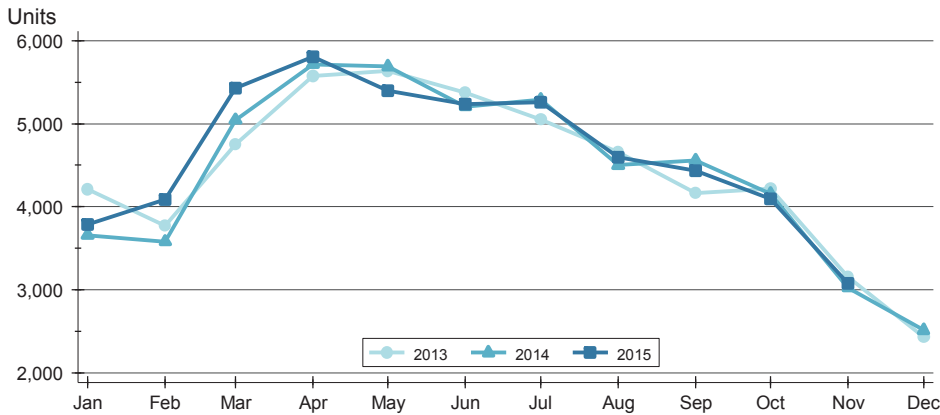
A total of 3,073 new listings were added in the state of Kansas during November, up 1.7% from the same month in 2014. Year-to-date the state of Kansas has seen 51,204 new listings.

The median list price of these homes was \$137,500 up from \$135,000 in 2014.

NEW LISTINGS ANALYSIS

**ENTIRE STATE OF KANSAS
ALL HOMES
AS OF 12/10/2015**

BY MONTH »



Month	2013	2014	2015
January	4,208	3,656	3,787
February	3,768	3,579	4,090
March	4,752	5,045	5,432
April	5,576	5,715	5,807
May	5,635	5,690	5,397
June	5,379	5,209	5,239
July	5,051	5,288	5,261
August	4,661	4,503	4,594
September	4,168	4,557	4,432
October	4,215	4,154	4,092
November	3,157	3,023	3,073
December	2,431	2,512	2,512

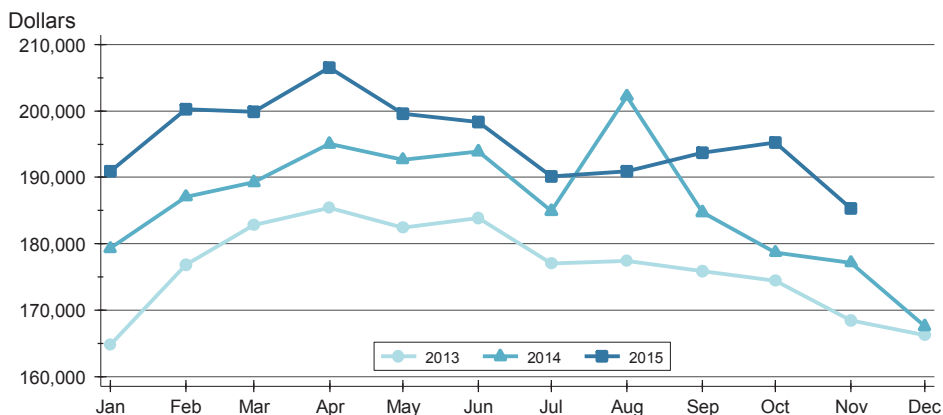
BY PRICE RANGE »

Price Range	New Listings			List Price	
	Number	Percent	Volume	Average	Median
Below \$25,000	90	2.9%	1,090	12,116	13,250
\$25,000-\$49,999	269	8.8%	10,236	38,053	39,000
\$50,000-\$99,999	696	22.6%	52,734	75,767	76,695
\$100,000-\$124,999	263	8.6%	30,120	114,526	115,000
\$125,000-\$149,999	336	10.9%	45,837	136,421	135,000
\$150,000-\$174,999	251	8.2%	40,731	162,276	160,000
\$175,000-\$199,999	224	7.3%	41,798	186,598	185,570
\$200,000-\$249,999	259	8.4%	58,519	225,941	225,000
\$250,000-\$299,999	202	6.6%	55,540	274,949	275,000
\$300,000 and up	437	14.2%	224,354	513,395	399,950
All price ranges	3,073	100.0%	569,484	185,319	137,500

NEW LISTINGS ANALYSIS

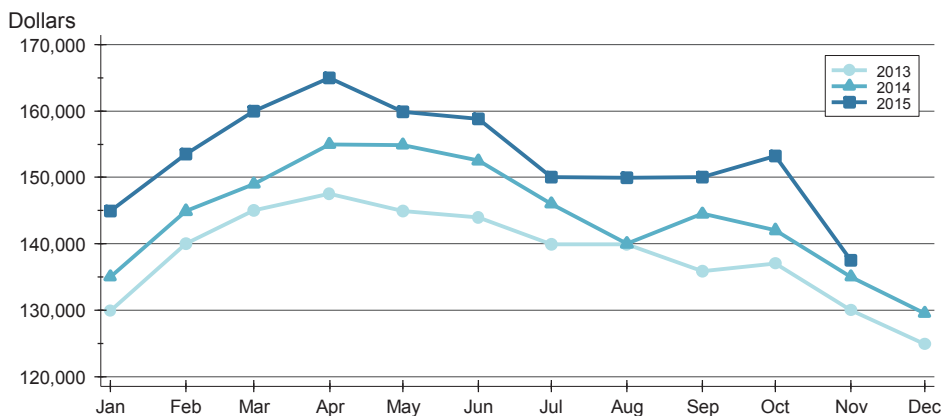
**ENTIRE STATE OF KANSAS
ALL HOMES
AS OF 12/10/2015**

AVERAGE PRICE >>



Month	2013	2014	2015
January	164,810	179,295	190,906
February	176,831	187,066	200,243
March	182,822	189,229	199,886
April	185,457	195,018	206,574
May	182,443	192,659	199,592
June	183,835	193,867	198,358
July	177,001	184,902	190,156
August	177,427	202,228	190,866
September	175,907	184,713	193,720
October	174,416	178,655	195,282
November	168,456	177,124	185,319
December	166,193	167,567	167,567

MEDIAN PRICE >>

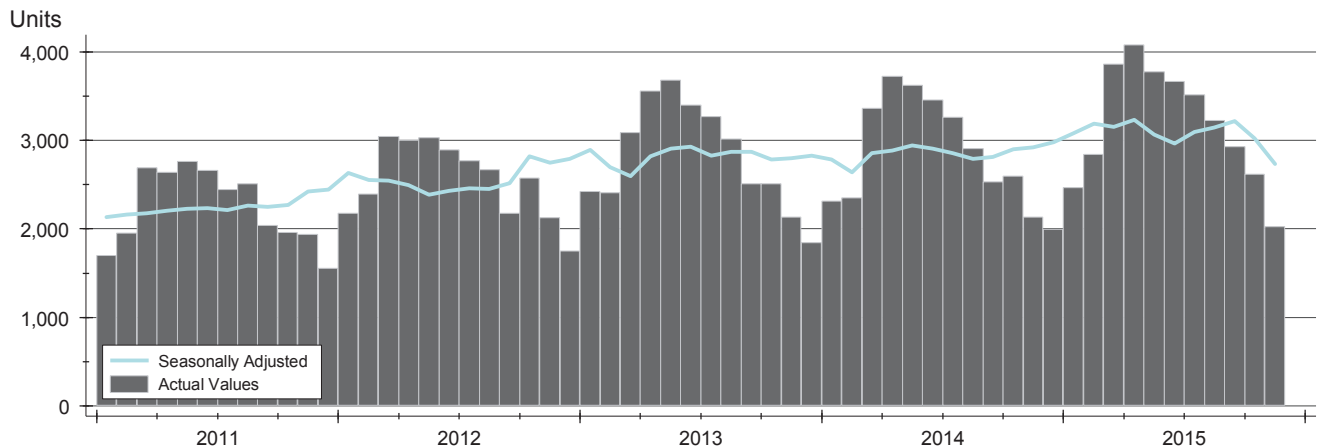


Month	2013	2014	2015
January	129,900	135,000	144,900
February	140,000	144,900	153,500
March	145,000	148,975	159,950
April	147,500	155,000	164,950
May	144,900	154,900	159,900
June	144,000	152,500	158,788
July	139,925	145,995	150,000
August	139,950	140,000	149,900
September	135,850	144,500	150,000
October	137,000	142,000	153,250
November	130,000	135,000	137,500
December	124,900	129,500	129,500

CONTRACTS WRITTEN ANALYSIS

**ENTIRE STATE OF KANSAS
ALL HOMES
AS OF 12/10/2015**

HISTORY >>



SUMMARY >>

Summary Statistics for Contracts Written		November			Year-to-Date		
		2015	2014	Change	2015	2014	Change
Contracts Written		2,028	2,136	-5.1%	35,012	32,278	8.5%
Volume (1,000s)		356,785	389,301	-8.4%	6,746,327	5,961,271	13.2%
Average	List Price	175,929	182,257	-3.5%	192,686	184,685	4.3%
	Days on Market	69	76	-9.3%	68	74	-8.6%
	Percent of Original	95.1%	93.2%	2.1%	95.0%	94.2%	0.9%
Median	List Price	139,900	154,150	-9.2%	159,900	150,000	6.6%
	Days on Market	39	48	-18.8%	37	43	-14.0%
	Percent of Original	100.0%	95.8%	4.3%	97.4%	96.7%	0.8%

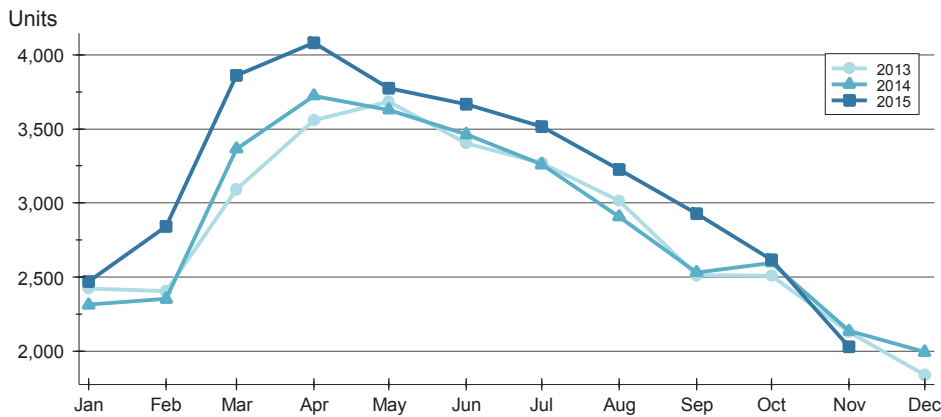
A total of 2,028 contracts for sale were written in the state of Kansas during the month of November, down from 2,136 in 2014. The median list price of these homes was \$139,900, down from \$154,150 the prior year.

Half of the homes that went under contract in November were on the market less than 39 days, compared to 48 days in November 2014.

CONTRACTS WRITTEN ANALYSIS

**ENTIRE STATE OF KANSAS
ALL HOMES
AS OF 12/10/2015**

BY MONTH >>



Month	2013	2014	2015
January	2,424	2,313	2,470
February	2,406	2,353	2,842
March	3,093	3,365	3,861
April	3,557	3,724	4,081
May	3,682	3,628	3,776
June	3,404	3,462	3,666
July	3,268	3,260	3,515
August	3,016	2,907	3,224
September	2,514	2,533	2,930
October	2,508	2,597	2,619
November	2,131	2,136	2,028
December	1,842	1,995	-

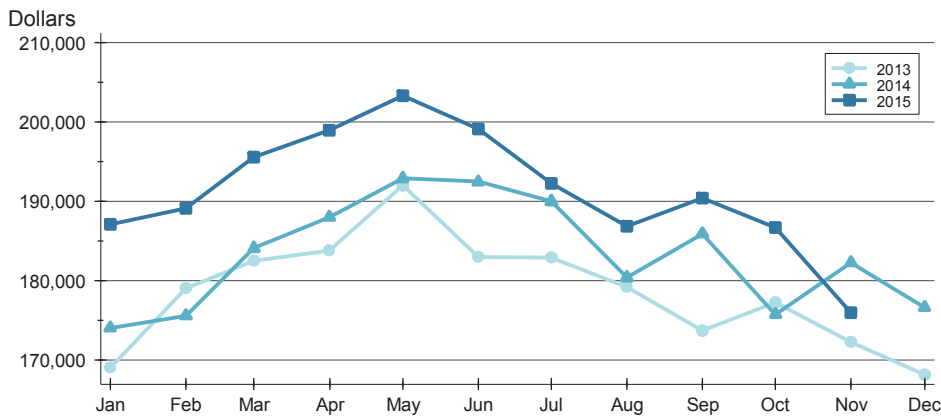
BY PRICE RANGE >>

Price Range	Contracts Written			List Price		Days on Market		List as % Orig.	
	Number	Percent	Volume	Average	Median	Average	Median	Average	Median
Below \$25,000	61	3.0%	1,083	17,749	19,000	78	62	79.4%	86.5%
\$25,000-\$49,999	160	7.9%	6,087	38,043	37,600	90	48	85.9%	90.6%
\$50,000-\$99,999	407	20.1%	31,011	76,195	75,900	71	42	93.9%	100.0%
\$100,000-\$124,999	200	9.9%	22,899	114,494	115,000	62	38	96.0%	100.0%
\$125,000-\$149,999	263	13.0%	35,944	136,671	135,000	57	31	96.8%	100.0%
\$150,000-\$174,999	193	9.5%	31,641	163,945	164,900	55	37	97.5%	100.0%
\$175,000-\$199,999	162	8.0%	30,330	187,221	186,400	62	37	97.4%	100.0%
\$200,000-\$249,999	186	9.2%	41,894	225,236	225,000	60	35	97.9%	100.0%
\$250,000-\$299,999	137	6.8%	37,611	274,536	274,500	79	38	98.2%	100.0%
\$300,000 and up	241	11.9%	115,117	477,666	400,000	88	38	97.3%	100.0%
All price ranges	2,028	100.0%	356,785	175,929	139,900	69	39	95.1%	100.0%

CONTRACTS WRITTEN ANALYSIS

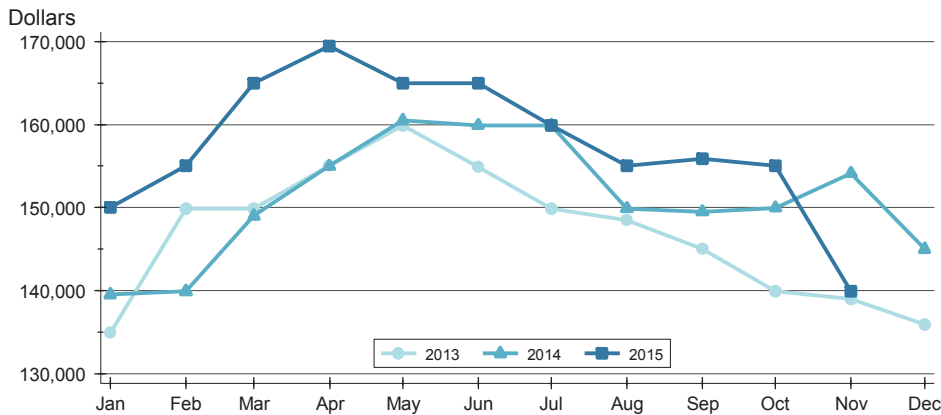
**ENTIRE STATE OF KANSAS
ALL HOMES
AS OF 12/10/2015**

AVERAGE PRICE »



Month	2013	2014	2015
January	169,022	174,019	187,112
February	178,991	175,572	189,112
March	182,526	184,076	195,543
April	183,783	187,999	198,985
May	191,984	192,887	203,304
June	182,996	192,459	199,132
July	182,919	189,982	192,285
August	179,159	180,372	186,833
September	173,729	185,889	190,378
October	177,278	175,730	186,701
November	172,275	182,257	175,929
December	168,170	176,615	

MEDIAN PRICE »

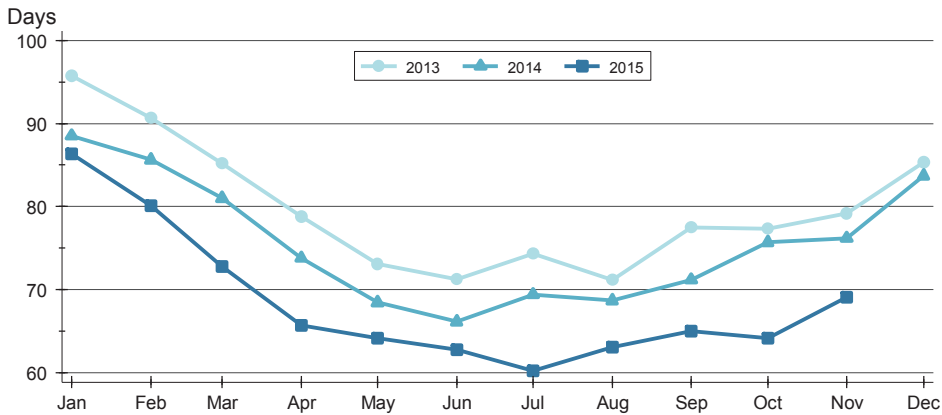


Month	2013	2014	2015
January	134,900	139,500	150,000
February	149,900	139,900	155,000
March	149,900	149,000	165,000
April	155,000	155,000	169,500
May	159,900	160,500	165,000
June	154,900	159,900	165,000
July	149,900	159,900	159,900
August	148,500	149,900	155,000
September	145,000	149,500	155,900
October	139,900	149,950	155,000
November	139,000	154,150	139,900
December	135,900	145,000	

CONTRACTS WRITTEN ANALYSIS

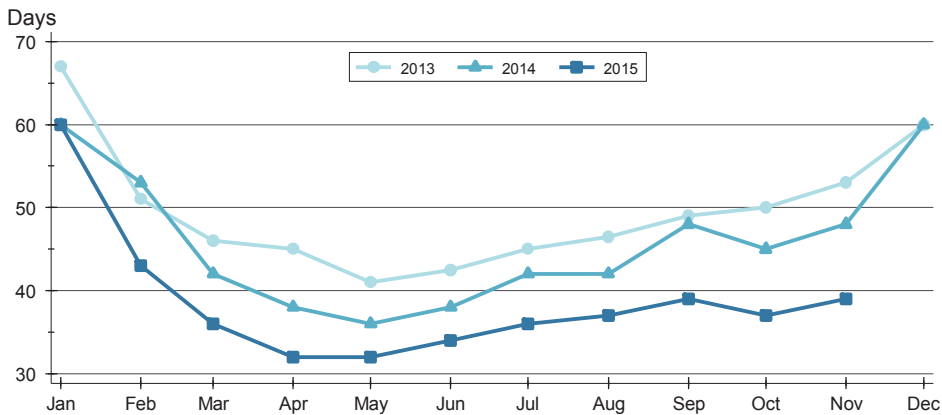
**ENTIRE STATE OF KANSAS
ALL HOMES
AS OF 12/10/2015**

AVERAGE DOM »



Month	2013	2014	2015
January	96	89	86
February	91	86	80
March	85	81	73
April	79	74	66
May	73	68	64
June	71	66	63
July	74	69	60
August	71	69	63
September	77	71	65
October	77	76	64
November	79	76	69
December	85	84	

MEDIAN DOM »

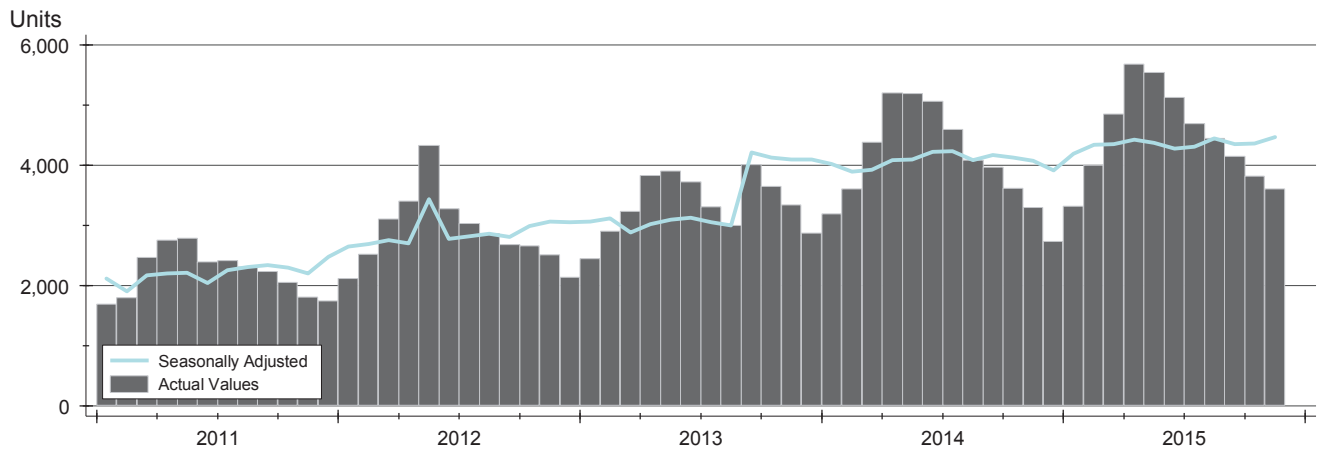


Month	2013	2014	2015
January	67	60	60
February	51	53	43
March	46	42	36
April	45	38	32
May	41	36	32
June	43	38	34
July	45	42	36
August	47	42	37
September	49	48	39
October	50	45	37
November	53	48	39
December	60	60	

PENDING CONTRACTS ANALYSIS

**ENTIRE STATE OF KANSAS
ALL HOMES
AS OF 12/10/2015**

HISTORY >>



SUMMARY >>

Summary Statistics for Pending Contracts		End of November		
		2015	2014	Change
Pending Contracts		3,607	3,302	9.2%
Volume (1,000s)		747,675	669,465	11.7%
Average	List Price	207,284	202,745	2.2%
	Days on Market	68	76	-11.1%
	Percent of Original	97.1%	97.0%	0.1%
Median	List Price	159,950	154,900	3.3%
	Days on Market	31	39	-20.5%
	Percent of Original	100.0%	100.0%	0.0%

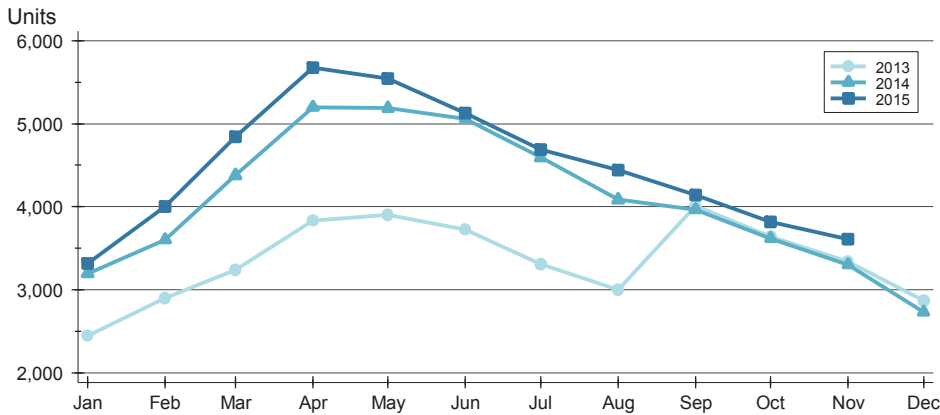
A total of 3,607 listings in the state of Kansas had contracts pending at the end of November, up from 3,302 contracts pending at the end of November 2014.

Pending contracts reflect listings with a contract in place at the end of the month. In contrast, contracts written measures the number of listings put under contract during the month.

PENDING CONTRACTS ANALYSIS

**ENTIRE STATE OF KANSAS
ALL HOMES
AS OF 12/10/2015**

BY MONTH >>



Month	2013	2014	2015
January	2,443	3,195	3,319
February	2,898	3,603	4,002
March	3,236	4,378	4,846
April	3,831	5,201	5,679
May	3,903	5,190	5,548
June	3,726	5,060	5,132
July	3,305	4,594	4,688
August	2,997	4,086	4,445
September	4,010	3,966	4,144
October	3,643	3,619	3,817
November	3,338	3,302	3,607
December	2,867	2,730	

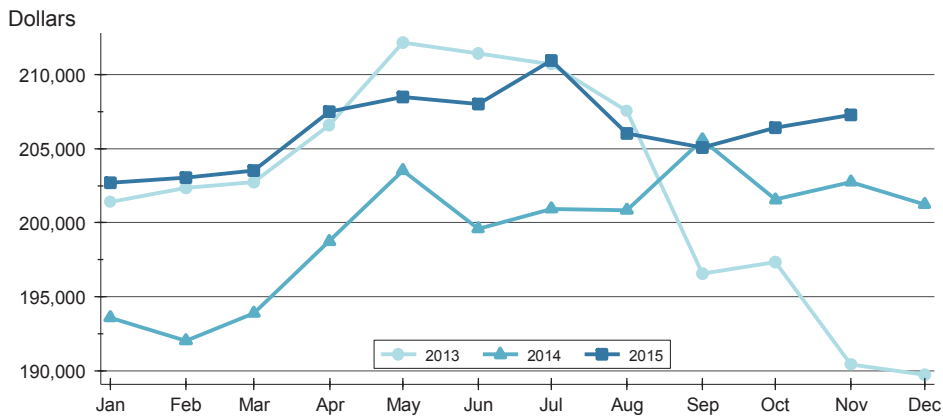
BY PRICE RANGE >>

Price Range	Contracts Pending			List Price		Days on Market		List as % Orig.	
	Number	Percent	Volume	Average	Median	Average	Median	Average	Median
Below \$25,000	58	1.6%	1,028	17,724	19,000	86	64	86.8%	100.0%
\$25,000-\$49,999	201	5.6%	7,915	39,378	39,900	93	56	92.1%	100.0%
\$50,000-\$99,999	701	19.4%	53,868	76,845	77,500	82	45	95.6%	100.0%
\$100,000-\$124,999	298	8.3%	33,886	113,712	114,900	69	40	96.9%	100.0%
\$125,000-\$149,999	398	11.0%	54,537	137,028	135,900	57	31	97.4%	100.0%
\$150,000-\$174,999	319	8.8%	51,841	162,511	160,250	55	31	98.2%	100.0%
\$175,000-\$199,999	299	8.3%	56,009	187,322	186,000	61	31	98.1%	100.0%
\$200,000-\$249,999	358	9.9%	80,749	225,557	225,000	60	27	98.3%	100.0%
\$250,000-\$299,999	254	7.0%	69,654	274,229	274,000	63	29	98.6%	100.0%
\$300,000 and up	698	19.4%	333,419	477,678	424,975	66	4	98.9%	100.0%
All price ranges	3,607	100.0%	747,675	207,284	159,950	68	31	97.1%	100.0%

PENDING CONTRACTS ANALYSIS

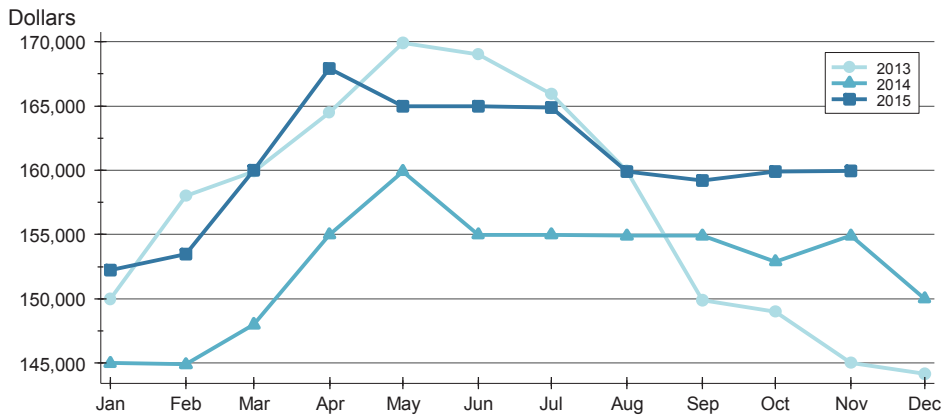
**ENTIRE STATE OF KANSAS
ALL HOMES
AS OF 12/10/2015**

AVERAGE PRICE >>



Month	2013	2014	2015
January	201,401	193,579	202,715
February	202,371	192,024	203,029
March	202,751	193,878	203,534
April	206,582	198,743	207,492
May	212,162	203,534	208,495
June	211,442	199,594	208,005
July	210,704	200,933	210,969
August	207,550	200,852	206,025
September	196,548	205,601	205,094
October	197,338	201,552	206,413
November	190,408	202,745	207,284
December	189,749	201,248	

MEDIAN PRICE >>

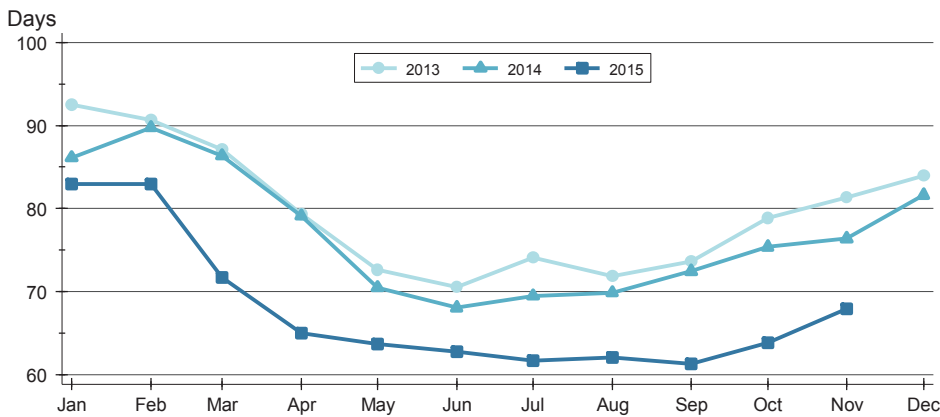


Month	2013	2014	2015
January	150,000	145,000	152,250
February	158,000	144,900	153,500
March	159,900	148,000	160,000
April	164,500	155,000	167,900
May	169,900	159,900	165,000
June	169,000	155,000	165,000
July	165,900	155,000	164,900
August	159,950	154,900	159,900
September	149,900	154,900	159,200
October	149,000	152,900	159,900
November	145,000	154,900	159,950
December	144,200	150,000	

PENDING CONTRACTS ANALYSIS

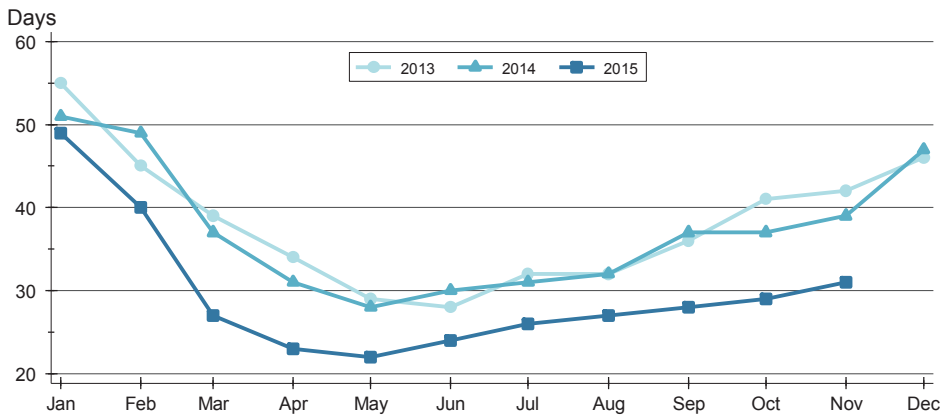
**ENTIRE STATE OF KANSAS
ALL HOMES
AS OF 12/10/2015**

AVERAGE DOM >>



Month	2013	2014	2015
January	93	86	83
February	91	90	83
March	87	86	72
April	79	79	65
May	73	70	64
June	71	68	63
July	74	69	62
August	72	70	62
September	74	72	61
October	79	75	64
November	81	76	68
December	84	82	

MEDIAN DOM >>



Month	2013	2014	2015
January	55	51	49
February	45	49	40
March	39	37	27
April	34	31	23
May	29	28	22
June	28	30	24
July	32	31	26
August	32	32	27
September	36	37	28
October	41	37	29
November	42	39	31
December	46	47	