

MARKET OVERVIEW >>

Kansas Home Sales Fell in March

Total home sales in the state of Kansas fell last month to 2,380 units, compared to 2,738 units in March 2013. Total sales volume was \$381.0 million, down from a year earlier.

The median sale price in March was \$133,000, down from \$135,325 a year earlier. Homes that sold in March were typically on the market for 55 days and sold for 97.7% of their list prices.

Kansas Active Listings Down at End of March

The total number of active listings in the state of Kansas at the end of March was 12,966 units, down from 14,044 at the same point in 2013. This represents a 5.4 months' supply of homes available for sale. The median list price of homes on the market at the end of March was \$143,000.

During March, a total of 3,078 contracts were written down from 3,227 in March 2013. At the end of the month, there were 4,378 contracts pending, compared to 3,238 at the end of March 2013.

KAR – The Voice of Real Estate in Kansas

The Kansas Association of REALTORS® (KAR) provides members with applications, ideas, knowledge and tools to help them succeed in real estate. Members can learn how to apply technology and productivity tools to grow their business; acquire knowledge about real estate trends, legal issues, legislation and regulation to gain a competitive advantage in the marketplace and connect with the best in the business to share knowledge and experience. This monthly statewide market report is provided so members can deliver the most accurate information to their clients and customers.

Contact Information

Karen Gehle, Chief Executive Officer
 Kansas Association of REALTORS®
 3644 W Burlingame Road
 Topeka, KS 66611
 800-366-0069

ceo@kansasrealtor.com
www.kansasrealtor.com

Entire State of Kansas		March		
Summary Statistics		2014	2013	Change
Home Sales		2,380	2,738	-13.0%
Active Listings		12,966	14,044	-8.0%
Months' Supply		5.4	5.1	6.2%
New Listings		4,872	4,691	3.9%
Contracts Written		3,078	3,227	-4.6%
Pending Contracts		4,378	3,238	35.2%
Sales Volume (1,000s)		380,955	447,272	-14.8%
Average	Sale Price	160,132	163,357	-2.0%
	List Price of Actives	206,750	195,696	5.6%
	Days on Market	86	92	-6.0%
	Percent of List	96.4%	96.2%	0.2%
	Percent of Original	93.1%	92.6%	0.6%
Median	Sale Price	133,000	135,325	-1.7%
	List Price of Actives	143,000	136,000	5.1%
	Days on Market	55	57	-3.5%
	Percent of List	97.7%	97.7%	0.1%
	Percent of Original	96.1%	95.4%	0.7%

REPORT CONTENTS >>

- **Market Overview Statistics** – Page 2
- **Year-to-Date Statistics** – Page 3
- **Sold Listings Analysis** – Page 4
- **Active Listings Analysis** – Page 8
- **Months' Supply Analysis** – Page 12
- **New Listings Analysis** – Page 13
- **Contracts Written Analysis** – Page 16
- **Pending Contracts Analysis** – Page 20

MARKET OVERVIEW STATISTICS

ENTIRE STATE OF KANSAS
 BREAKDOWNS BY HOME TYPE
 AS OF 4/15/2014

SUMMARY >>

March MLS Statistics By Property Type		2014			2013			2012			
		Total	Existing	New	Total	Existing	New	Total	Existing	New	
Home Sales		2,380	2,230	150	2,738	2,550	188	2,580	2,389	191	
	Change from prior year	-13.1%	-12.5%	-20.2%	6.1%	6.7%	-1.6%	14.8%	13.3%	38.4%	
Active Listings		12,966	11,882	1,084	14,044	13,089	955	16,331	15,234	1,097	
	Change from prior year	-7.7%	-9.2%	13.5%	-14.0%	-14.1%	-12.9%	-13.0%	-11.9%	-25.7%	
Months' Supply		5.4	5.3	7.2	5.1	5.1	5.1	6.3	6.4	5.7	
	Change from prior year	6.2%	3.8%	42.3%	-19.0%	-19.5%	-11.6%	-24.2%	-22.3%	-46.3%	
New Listings		4,872	4,607	265	4,691	4,434	257	5,115	4,858	257	
	Change from prior year	3.9%	3.9%	3.1%	-8.3%	-8.7%	0.0%	-6.9%	-7.1%	-3.7%	
Contracts Written		3,078	2,847	231	3,227	2,983	244	3,193	2,952	241	
	Change from prior year	-4.6%	-4.6%	-5.3%	1.1%	1.1%	1.2%	14.6%	14.6%	15.9%	
Pending Contracts		4,378	3,727	651	3,238	2,676	562	3,108	2,683	425	
	Change from prior year	35.2%	39.3%	15.8%	4.2%	-0.3%	32.2%	26.0%	24.0%	40.7%	
Sales Volume (1,000s)		380,955	329,025	51,930	447,272	387,969	59,303	387,955	329,266	58,689	
	Change from prior year	-14.8%	-15.2%	-12.4%	15.3%	17.8%	1.0%	21.4%	16.6%	57.8%	
Average	Sale Price	160,132	147,611	346,197	163,357	152,145	315,442	150,370	137,826	307,273	
		Change from prior year	-2.0%	-3.0%	9.7%	8.6%	10.4%	2.7%	5.7%	3.0%	14.0%
	List Price of Actives	206,750	195,597	328,185	195,696	187,913	309,143	196,819	189,809	296,943	
		Change from prior year	5.6%	4.1%	6.2%	-0.6%	-1.0%	4.1%	-2.2%	-2.5%	4.6%
	Days on Market	86	85	103	92	90	109	107	105	137	
		Change from prior year	-6.3%	-6.3%	-5.4%	-14.5%	-13.8%	-20.3%	0.1%	-0.9%	7.8%
Percent of List		96.4%	96.1%	101.9%	96.2%	95.9%	101.1%	95.4%	95.0%	99.9%	
		Change from prior year	0.2%	0.2%	0.9%	0.9%	0.9%	1.1%	-0.1%	-0.1%	-0.3%
	Percent of Original	93.1%	92.5%	102.1%	92.6%	91.9%	101.5%	90.7%	90.0%	99.3%	
	Change from prior year	0.6%	0.6%	0.6%	2.1%	2.1%	2.2%	0.2%	0.1%	-0.7%	
Median	Sale Price	133,000	126,500	309,236	135,325	128,000	278,876	125,000	117,500	268,550	
		Change from prior year	-1.7%	-1.2%	10.9%	8.3%	8.9%	3.8%	4.2%	2.2%	14.8%
	List Price of Actives	143,000	134,000	313,353	136,000	129,900	269,950	145,900	139,900	270,000	
		Change from prior year	5.1%	3.2%	16.1%	-6.8%	-7.1%	0.0%	-2.7%	-2.5%	8.2%
	Days on Market	55	55	64	57	57	73	75	73	93	
		Change from prior year	-3.5%	-3.5%	-13.0%	-23.5%	-21.9%	-21.5%	-0.7%	-2.7%	10.7%
Percent of List	97.7%	97.3%	100.2%	97.7%	97.4%	100.0%	97.0%	96.8%	100.0%		
	Change from prior year	0.1%	-0.1%	0.2%	0.7%	0.7%	0.0%	0.1%	0.0%	0.0%	
Percent of Original	96.1%	95.7%	101.0%	95.4%	94.9%	100.0%	94.0%	93.4%	100.0%		
	Change from prior year	0.7%	0.8%	1.0%	1.5%	1.5%	0.0%	0.3%	0.2%	0.0%	

YEAR-TO-DATE STATISTICS

SUMMARY >>

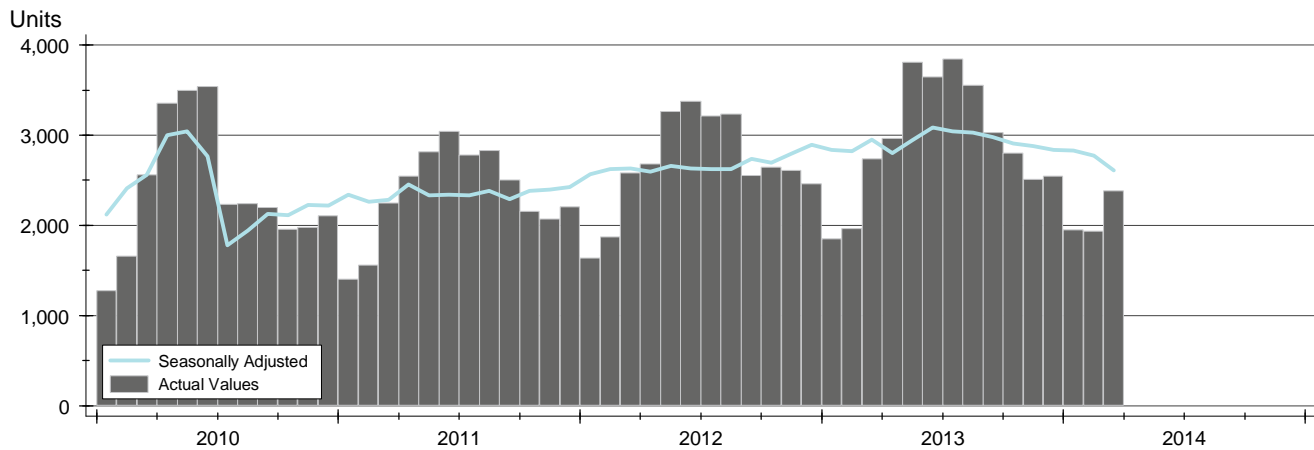
**ENTIRE STATE OF KANSAS
YTD BREAKDOWNS BY HOME TYPE
AS OF 4/15/2014**

Year-to-Date Activity By Property Type		2014			2013			2012		
		Total	Existing	New	Total	Existing	New	Total	Existing	New
Home Sales		6,263	5,831	432	6,554	6,108	446	6,087	5,689	398
Change from prior year		-4.4%	-4.5%	-3.1%	7.7%	7.4%	12.1%	16.9%	16.9%	17.1%
New Listings		11,890	11,198	692	12,550	11,799	751	13,143	12,444	699
Change from prior year		-5.3%	-5.1%	-7.9%	-4.5%	-5.2%	7.4%	1.6%	1.7%	1.0%
Contracts Written		7,858	7,303	555	8,317	7,661	656	8,004	7,399	605
Change from prior year		-5.5%	-4.7%	-15.4%	3.9%	3.5%	8.4%	22.8%	21.8%	37.2%
Sales Volume (1,000s)		994,507	848,822	145,685	1,025,770	878,208	147,562	873,210	753,141	120,069
Change from prior year		-3.0%	-3.3%	-1.3%	17.5%	16.6%	22.9%	18.5%	17.4%	25.8%
Average	Sale Price	158,816	145,596	337,234	156,534	143,803	330,856	143,479	132,409	301,680
	Change from prior year	1.5%	1.2%	1.9%	9.1%	8.6%	9.7%	1.3%	0.3%	7.5%
	Days on Market	87	87	94	94	93	103	106	105	130
	Change from prior year	-7.2%	-7.1%	-9.3%	-11.6%	-10.8%	-20.9%	-1.2%	-0.8%	-6.3%
Median	Percent of List	96.1%	95.7%	101.7%	95.7%	95.3%	101.4%	94.8%	94.4%	100.3%
	Change from prior year	0.4%	0.4%	0.2%	0.9%	0.9%	1.2%	0.0%	0.1%	-0.9%
	Percent of Original	92.5%	91.8%	101.8%	91.5%	90.8%	101.5%	89.8%	89.1%	99.2%
	Change from prior year	1.1%	1.2%	0.3%	1.9%	1.9%	2.2%	0.4%	0.5%	-1.1%
Median	Sale Price	129,900	122,500	304,209	127,500	120,000	289,828	118,500	111,950	253,566
	Change from prior year	1.9%	2.1%	5.0%	7.6%	7.2%	14.3%	-0.2%	0.9%	3.6%
	Days on Market	58	59	39	63	63	55	76	74	89
	Change from prior year	-7.9%	-6.3%	-29.1%	-17.1%	-14.9%	-38.2%	-2.6%	-5.1%	13.4%
Median	Percent of List	97.6%	97.2%	100.0%	97.3%	97.0%	100.0%	96.7%	96.4%	100.0%
	Change from prior year	0.3%	0.3%	0.0%	0.7%	0.6%	0.0%	0.0%	0.0%	0.0%
	Percent of Original	95.6%	95.0%	100.6%	94.7%	94.2%	100.3%	93.2%	92.6%	100.0%
	Change from prior year	0.9%	0.8%	0.2%	1.6%	1.8%	0.3%	0.1%	0.1%	0.0%

SOLD LISTINGS ANALYSIS

HISTORY >>

**ENTIRE STATE OF KANSAS
ALL HOMES
AS OF 4/15/2014**



SUMMARY >>

Summary Statistics for Sold Listings		March			Year-to-Date		
		2014	2013	Change	2014	2013	Change
Sold Listings		2,380	2,738	-13.1%	6,263	6,554	-4.4%
Volume (1,000s)		380,955	447,272	-14.8%	994,507	1,025,770	-3.0%
Average	Sale Price	160,132	163,357	-2.0%	158,816	156,534	1.5%
	Days on Market	86	92	-6.3%	87	94	-7.2%
	Percent of List	96.4%	96.2%	0.2%	96.1%	95.7%	0.4%
	Percent of Original	93.1%	92.6%	0.6%	92.5%	91.5%	1.1%
Median	Sale Price	133,000	135,325	-1.7%	129,900	127,500	1.9%
	Days on Market	55	57	-3.5%	58	63	-7.9%
	Percent of List	97.7%	97.7%	0.1%	97.6%	97.3%	0.3%
	Percent of Original	96.1%	95.4%	0.7%	95.6%	94.7%	0.9%

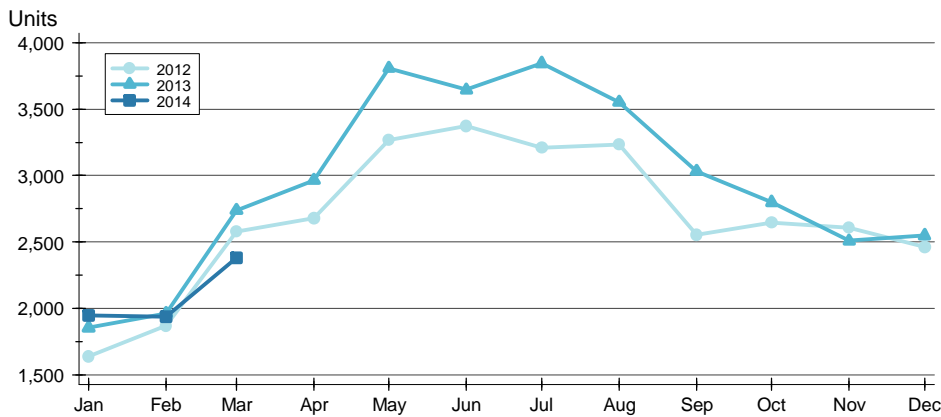
A total of 2,380 homes sold in the state of Kansas in March, down from 2,738 units in March 2013. Total sales volume fell to \$381.0 million compared to \$447.3 million in the previous year.

The median sales price in March was \$133,000, down 1.7% compared to the prior year. Median days on market was 55 days, down from 60 days in February, and down from 57 in March 2013.

SOLD LISTINGS ANALYSIS

BY MONTH >>

**ENTIRE STATE OF KANSAS
ALL HOMES
AS OF 4/15/2014**



Month	2012	2013	2014
January	1,636	1,853	1,948
February	1,871	1,963	1,935
March	2,580	2,738	2,380
April	2,681	2,965	
May	3,265	3,808	
June	3,375	3,646	
July	3,211	3,845	
August	3,235	3,553	
September	2,553	3,031	
October	2,643	2,799	
November	2,608	2,508	
December	2,464	2,547	

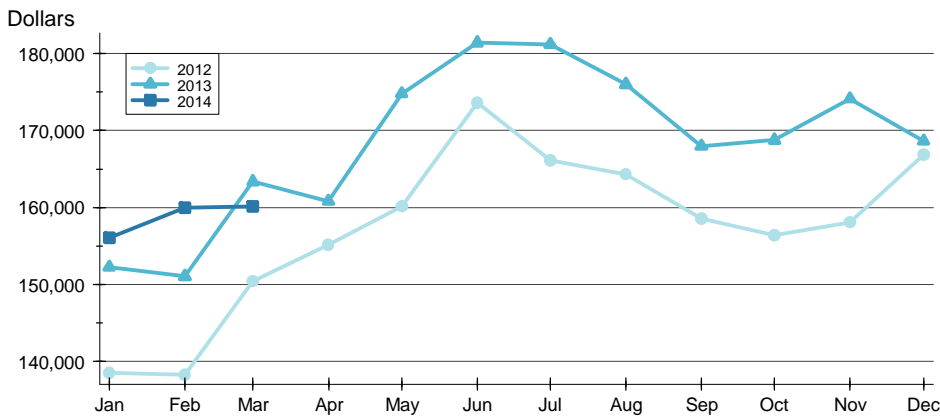
BY PRICE RANGE >>

Price Range	Sales			Sale Price		Days on Market		Price as % of List		Price as % of Orig.	
	Number	Percent	Volume	Average	Median	Average	Median	Average	Median	Average	Median
Below \$25,000	139	5.8%	2,177	15,660	16,000	79	42	86.2%	88.8%	75.1%	75.0%
\$25,000-\$49,999	250	10.5%	9,213	36,852	37,850	88	50	93.3%	93.4%	85.5%	87.0%
\$50,000-\$99,999	477	20.0%	35,316	74,038	75,000	94	61	95.9%	96.4%	91.7%	93.8%
\$100,000-\$124,999	220	9.2%	24,846	112,935	113,300	84	62	97.1%	98.0%	93.9%	95.8%
\$125,000-\$149,999	286	12.0%	38,880	135,945	135,000	81	59	97.8%	98.0%	95.9%	96.7%
\$150,000-\$174,999	238	10.0%	38,452	161,562	161,000	78	53	98.1%	98.3%	96.7%	97.3%
\$175,000-\$199,999	169	7.1%	31,333	185,400	184,500	93	62	97.9%	98.4%	96.2%	97.1%
\$200,000-\$249,999	206	8.7%	46,013	223,366	221,702	80	49	97.8%	98.1%	96.6%	97.1%
\$250,000-\$299,999	134	5.6%	36,244	270,479	269,900	80	47	98.5%	99.0%	97.1%	98.2%
\$300,000 and up	260	10.9%	118,481	455,695	400,000	89	57	98.4%	98.3%	97.2%	97.4%
All price ranges	2,380	100.0%	380,955	160,132	133,000	86	55	96.4%	97.7%	93.1%	96.1%

SOLD LISTINGS ANALYSIS

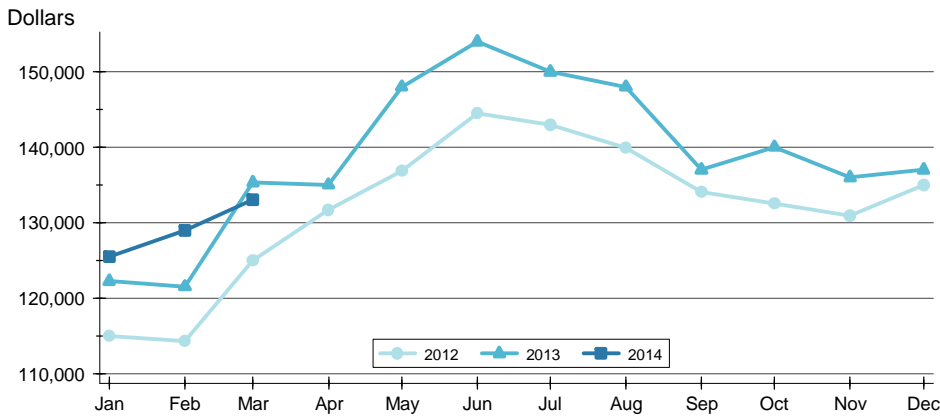
**ENTIRE STATE OF KANSAS
ALL HOMES
AS OF 4/15/2014**

AVERAGE PRICE >>



Month	2012	2013	2014
January	138,515	152,253	156,091
February	138,313	151,057	159,942
March	150,370	163,357	160,132
April	155,169	160,827	
May	160,155	174,802	
June	173,634	181,420	
July	166,135	181,216	
August	164,328	175,997	
September	158,529	167,975	
October	156,374	168,762	
November	158,047	174,111	
December	166,894	168,649	

MEDIAN PRICE >>

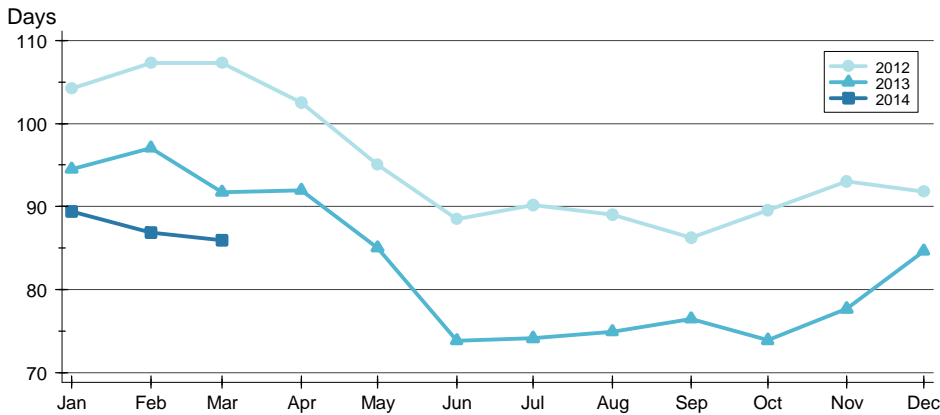


Month	2012	2013	2014
January	114,950	122,250	125,500
February	114,250	121,500	129,000
March	125,000	135,325	133,000
April	131,700	135,000	
May	136,900	148,000	
June	144,500	154,000	
July	143,000	150,000	
August	139,900	148,000	
September	134,100	137,000	
October	132,500	140,000	
November	130,900	136,000	
December	135,000	137,000	

SOLD LISTINGS ANALYSIS

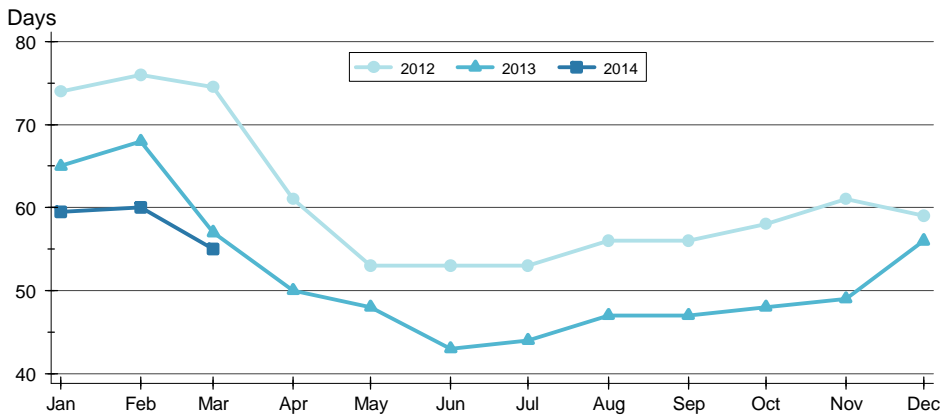
**ENTIRE STATE OF KANSAS
ALL HOMES
AS OF 4/15/2014**

AVERAGE DOM >>



Month	2012	2013	2014
January	104	95	89
February	107	97	87
March	107	92	86
April	103	92	
May	95	85	
June	89	74	
July	90	74	
August	89	75	
September	86	76	
October	90	74	
November	93	78	
December	92	85	

MEDIAN DOM >>

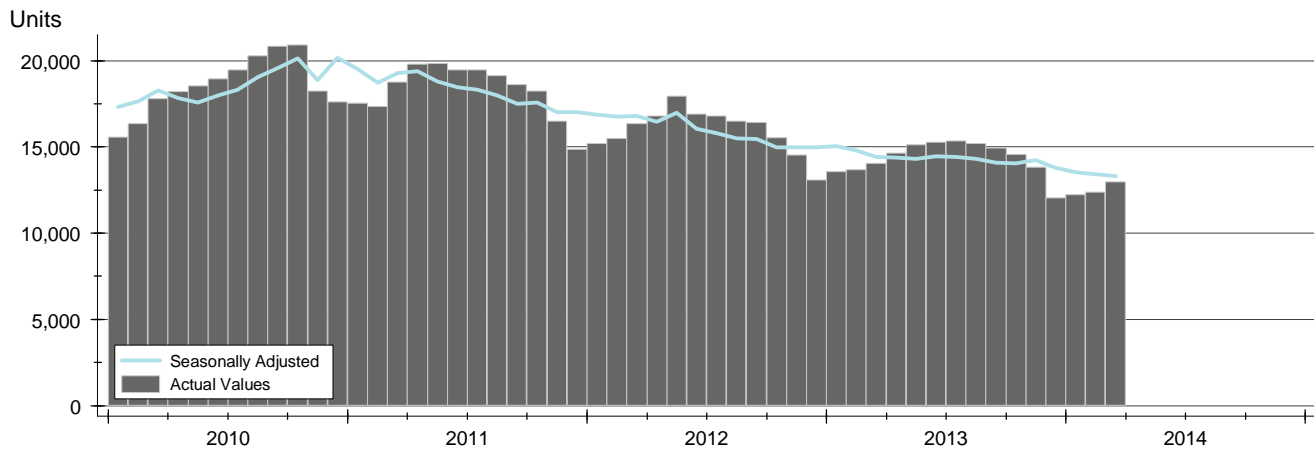


Month	2012	2013	2014
January	74	65	60
February	76	68	60
March	75	57	55
April	61	50	
May	53	48	
June	53	43	
July	53	44	
August	56	47	
September	56	47	
October	58	48	
November	61	49	
December	59	56	

ACTIVE LISTINGS ANALYSIS

HISTORY >>

**ENTIRE STATE OF KANSAS
ALL HOMES
AS OF 4/15/2014**



SUMMARY >>

Summary Statistics for Active Listings		End of March		
		2014	2013	Change
Active Listings		12,966	14,044	-7.7%
Months' Supply		5.4	5.1	6.2%
Volume (1,000s)		2,680,723	2,748,360	-2.5%
Average	List Price	206,750	195,696	5.6%
	Days on Market	120	134	-10.1%
	Percent of Original	97.6%	97.4%	0.3%
Median	List Price	143,000	136,000	5.1%
	Days on Market	70	74	-5.4%
	Percent of Original	100.0%	100.0%	0.0%

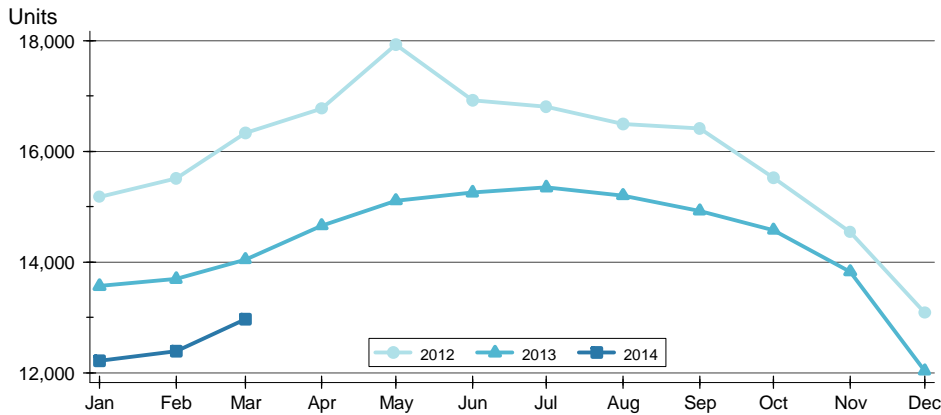
A total of 12,966 homes were available for sale in the state of Kansas at the end of March. This represents a 5.4 months' supply of active listings.

The median list price of homes on the market at the end of March was \$143,000, up 5.1% from 2013. The typical time on market for active listings was 70 days, down from 74 days a year earlier.

ACTIVE LISTINGS ANALYSIS

BY MONTH >>

**ENTIRE STATE OF KANSAS
ALL HOMES
AS OF 4/15/2014**



Month	2012	2013	2014
January	15,182	13,565	12,215
February	15,512	13,692	12,387
March	16,331	14,044	12,966
April	16,778	14,658	
May	17,931	15,111	
June	16,922	15,255	
July	16,804	15,349	
August	16,499	15,205	
September	16,414	14,924	
October	15,530	14,576	
November	14,540	13,824	
December	13,088	12,035	

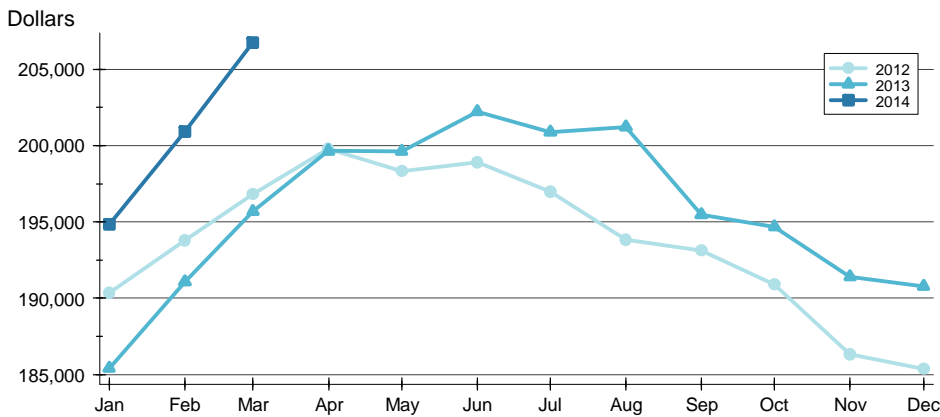
BY PRICE RANGE >>

Price Range	Active Listings			Months' Supply	List Price		Days on Market		List as % Orig.	
	Number	Percent	Volume		Average	Median	Average	Median	Average	Median
Below \$25,000	245	1.9%	4,204	1.8	17,161	18,900	140	81	90.8%	100.0%
\$25,000-\$49,999	1,060	8.2%	40,980	4.2	38,661	39,500	153	97	94.9%	100.0%
\$50,000-\$99,999	2,983	23.0%	225,015	6.3	75,433	75,000	134	82	96.9%	100.0%
\$100,000-\$124,999	1,123	8.7%	127,207	5.1	113,275	114,000	122	75	97.5%	100.0%
\$125,000-\$149,999	1,384	10.7%	189,420	4.8	136,864	136,000	106	56	98.4%	100.0%
\$150,000-\$174,999	987	7.6%	160,287	4.1	162,398	160,950	104	59	98.2%	100.0%
\$175,000-\$199,999	935	7.2%	175,291	5.5	187,477	187,950	100	59	98.8%	100.0%
\$200,000-\$249,999	1,101	8.5%	248,724	5.3	225,907	225,000	95	49	98.6%	100.0%
\$250,000-\$299,999	825	6.4%	227,375	6.2	275,606	275,000	96	48	98.7%	100.0%
\$300,000 and up	2,243	17.3%	1,265,680	8.6	564,280	425,000	132	75	98.7%	100.0%
All price ranges	12,966	100.0%	2,680,723	5.4	206,750	143,000	120	70	97.6%	100.0%

ACTIVE LISTINGS ANALYSIS

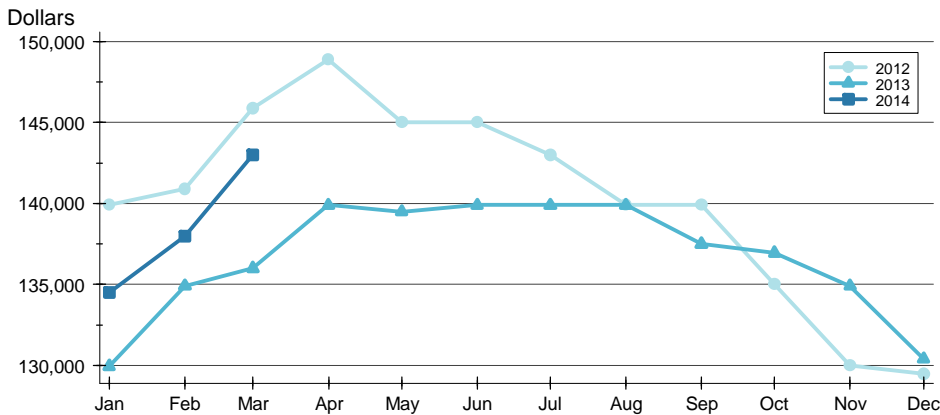
**ENTIRE STATE OF KANSAS
ALL HOMES
AS OF 4/15/2014**

AVERAGE PRICE >>



Month	2012	2013	2014
January	190,367	185,407	194,853
February	193,782	191,062	200,927
March	196,819	195,696	206,750
April	199,784	199,644	
May	198,333	199,638	
June	198,927	202,230	
July	196,990	200,892	
August	193,817	201,225	
September	193,126	195,472	
October	190,882	194,686	
November	186,303	191,414	
December	185,350	190,772	

MEDIAN PRICE >>

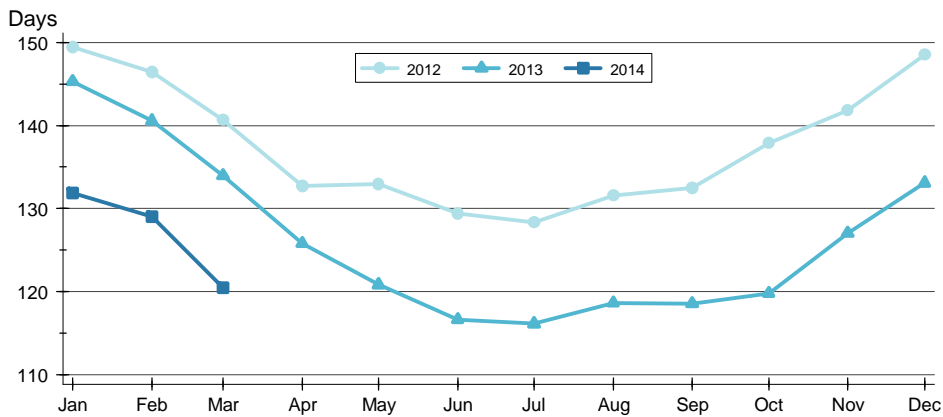


Month	2012	2013	2014
January	139,900	129,950	134,500
February	140,900	134,900	138,000
March	145,900	136,000	143,000
April	148,900	139,900	
May	145,000	139,500	
June	145,000	139,900	
July	143,000	139,900	
August	139,900	139,900	
September	139,900	137,500	
October	135,000	136,950	
November	130,000	134,900	
December	129,500	130,400	

ACTIVE LISTINGS ANALYSIS

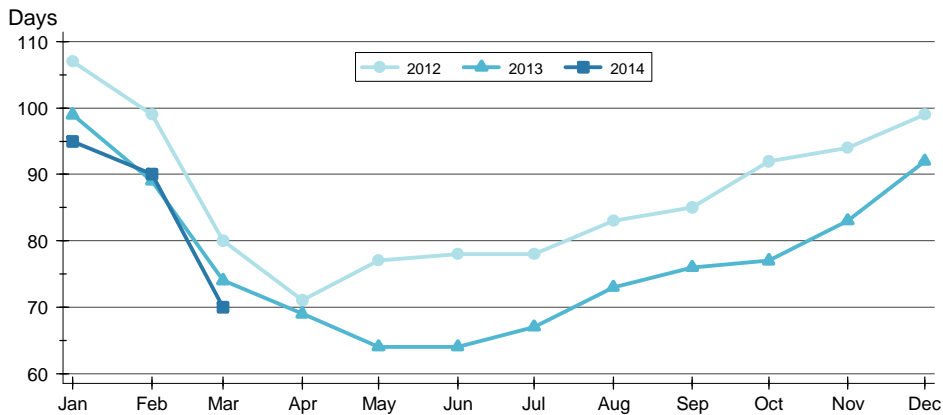
**ENTIRE STATE OF KANSAS
ALL HOMES
AS OF 4/15/2014**

AVERAGE DOM >>



Month	2012	2013	2014
January	149	145	132
February	146	141	129
March	141	134	120
April	133	126	
May	133	121	
June	129	117	
July	128	116	
August	132	119	
September	133	119	
October	138	120	
November	142	127	
December	149	133	

MEDIAN DOM >>

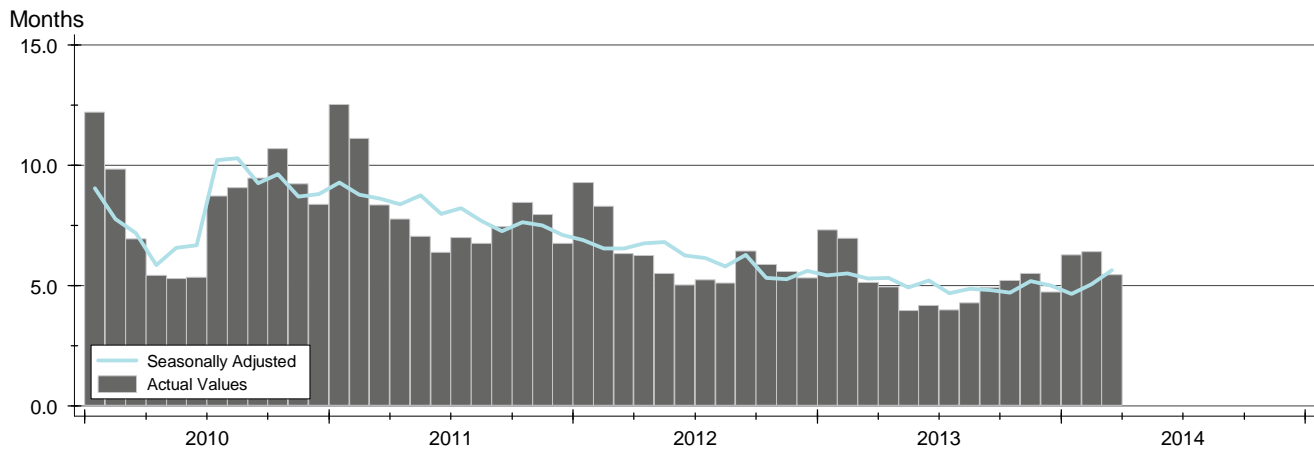


Month	2012	2013	2014
January	107	99	95
February	99	89	90
March	80	74	70
April	71	69	
May	77	64	
June	78	64	
July	78	67	
August	83	73	
September	85	76	
October	92	77	
November	94	83	
December	99	92	

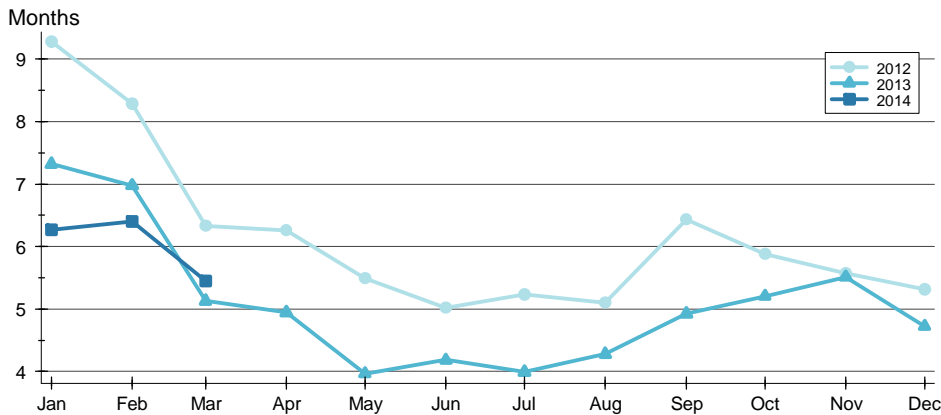
MONTHS' SUPPLY ANALYSIS

HISTORY >>

**ENTIRE STATE OF KANSAS
ALL HOMES
AS OF 4/15/2014**



BY MONTH >>

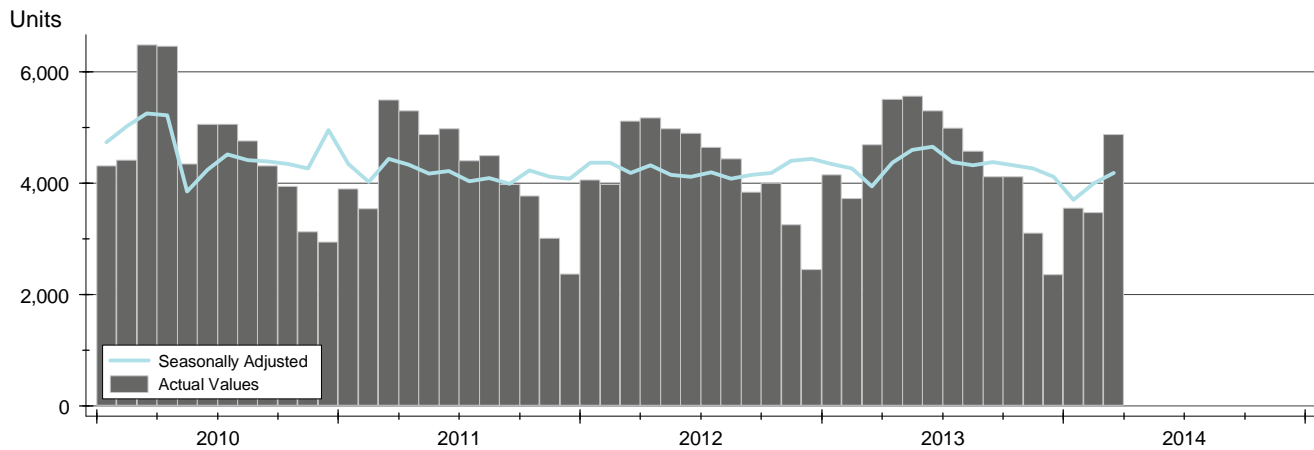


Month	2012	2013	2014
January	9.3	7.3	6.3
February	8.3	7.0	6.4
March	6.3	5.1	5.4
April	6.3	4.9	
May	5.5	4.0	
June	5.0	4.2	
July	5.2	4.0	
August	5.1	4.3	
September	6.4	4.9	
October	5.9	5.2	
November	5.6	5.5	
December	5.3	4.7	

NEW LISTINGS ANALYSIS

HISTORY >>

**ENTIRE STATE OF KANSAS
ALL HOMES
AS OF 4/15/2014**



SUMMARY >>

Summary Statistics for New Listings		March		
		2014	2013	Change
Current Month	New Listings	4,872	4,691	3.9%
	Volume (1,000s)	945,636	862,898	9.6%
	Average List Price	194,096	183,948	5.5%
	Median List Price	149,900	145,000	3.4%
YTD	New Listings	11,890	12,550	-5.3%
	Volume (1,000s)	2,256,315	2,214,312	1.9%
	Average List Price	189,766	176,439	7.6%
	Median List Price	145,000	139,900	3.6%

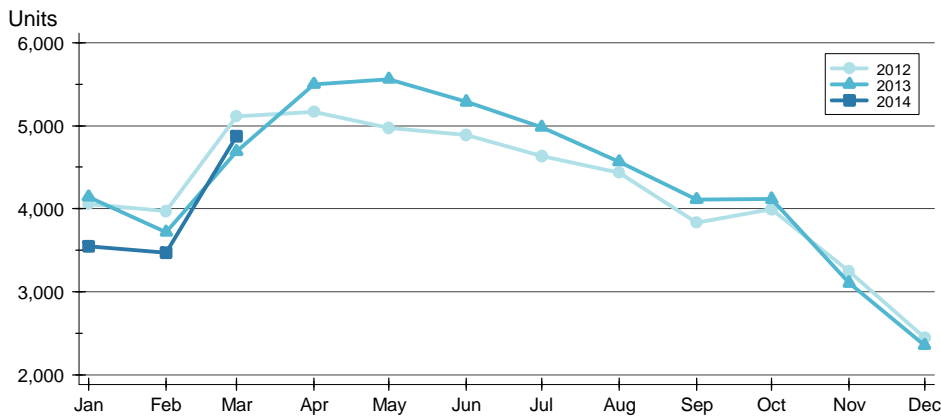
A total of 4,872 new listings were added in the state of Kansas during March, up 3.9% from the same month in 2013. Year-to-date the state of Kansas has seen 11,890 new listings.

The median list price of these homes was \$149,900 up from \$145,000 in 2013.

NEW LISTINGS ANALYSIS

**ENTIRE STATE OF KANSAS
ALL HOMES
AS OF 4/15/2014**

BY MONTH >>



Month	2012	2013	2014
January	4,059	4,142	3,546
February	3,969	3,717	3,472
March	5,115	4,691	4,872
April	5,169	5,501	
May	4,978	5,561	
June	4,892	5,290	
July	4,637	4,982	
August	4,438	4,568	
September	3,830	4,110	
October	3,997	4,115	
November	3,245	3,104	
December	2,446	2,354	

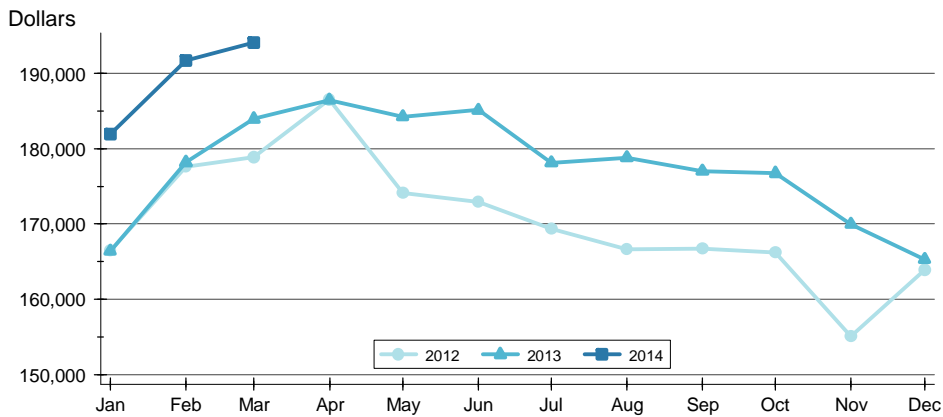
BY PRICE RANGE >>

Price Range	New Listings			List Price	
	Number	Percent	Volume	Average	Median
Below \$25,000	92	1.9%	1,415	15,378	17,700
\$25,000-\$49,999	324	6.7%	12,718	39,252	39,900
\$50,000-\$99,999	970	19.9%	74,354	76,654	77,500
\$100,000-\$124,999	437	9.0%	49,576	113,446	114,900
\$125,000-\$149,999	610	12.5%	83,842	137,446	137,500
\$150,000-\$174,999	439	9.0%	71,147	162,067	160,000
\$175,000-\$199,999	385	7.9%	72,030	187,092	185,000
\$200,000-\$249,999	492	10.1%	111,028	225,667	225,000
\$250,000-\$299,999	364	7.5%	100,367	275,734	274,950
\$300,000 and up	727	14.9%	362,948	499,240	400,000
All price ranges	4,872	100.0%	945,636	194,096	149,900

NEW LISTINGS ANALYSIS

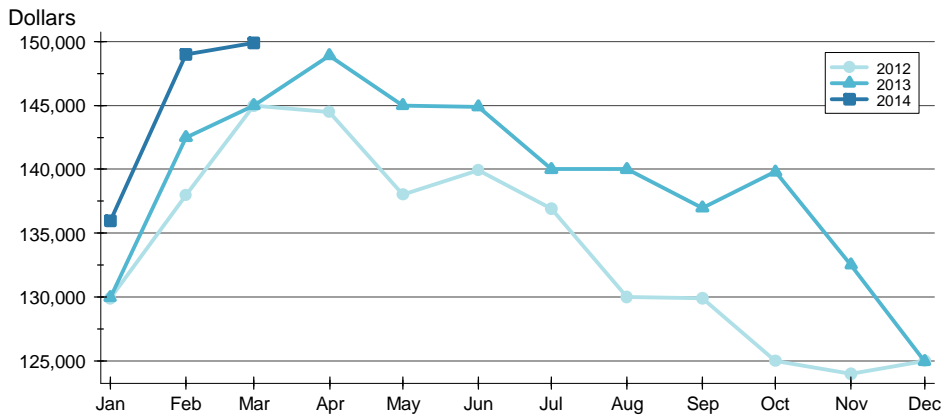
**ENTIRE STATE OF KANSAS
ALL HOMES
AS OF 4/15/2014**

AVERAGE PRICE >>



Month	2012	2013	2014
January	166,448	166,389	181,943
February	177,627	178,161	191,714
March	178,834	183,948	194,096
April	186,495	186,486	
May	174,095	184,252	
June	172,885	185,132	
July	169,366	178,115	
August	166,662	178,833	
September	166,733	177,006	
October	166,183	176,725	
November	155,026	169,951	
December	163,927	165,263	

MEDIAN PRICE >>

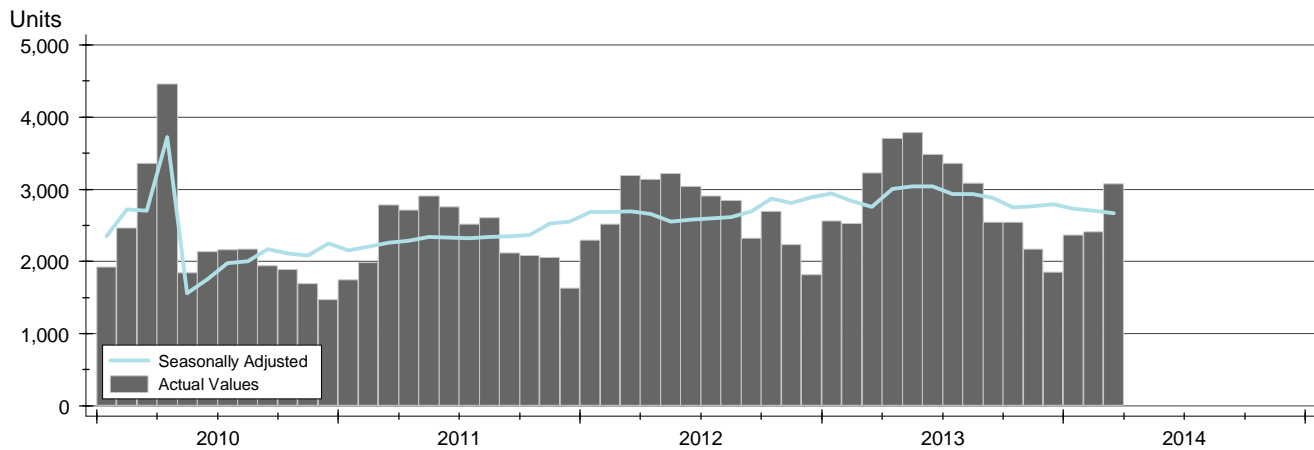


Month	2012	2013	2014
January	129,900	129,950	135,950
February	137,950	142,500	149,000
March	145,000	145,000	149,900
April	144,500	148,900	
May	138,000	145,000	
June	139,900	144,900	
July	136,900	140,000	
August	130,000	140,000	
September	129,900	136,975	
October	125,000	139,800	
November	124,000	132,500	
December	124,990	124,950	

CONTRACTS WRITTEN ANALYSIS

HISTORY >>

**ENTIRE STATE OF KANSAS
ALL HOMES
AS OF 4/15/2014**



SUMMARY >>

Summary Statistics for Contracts Written		March			Year-to-Date		
		2014	2013	Change	2014	2013	Change
Contracts Written		3,078	3,227	-4.6%	7,858	8,317	-5.5%
Volume (1,000s)		525,059	578,976	-9.3%	1,342,736	1,447,951	-7.3%
Average	List Price	170,584	179,416	-4.9%	170,875	174,095	-1.8%
	Days on Market	80	86	-7.5%	85	91	-7.0%
	Percent of Original	96.0%	93.8%	2.3%	94.2%	92.9%	1.3%
Median	List Price	139,900	147,000	-4.8%	138,271	142,500	-3.0%
	Days on Market	35	47	-25.5%	50	55	-9.1%
	Percent of Original	100.0%	96.5%	3.6%	97.8%	95.9%	1.9%

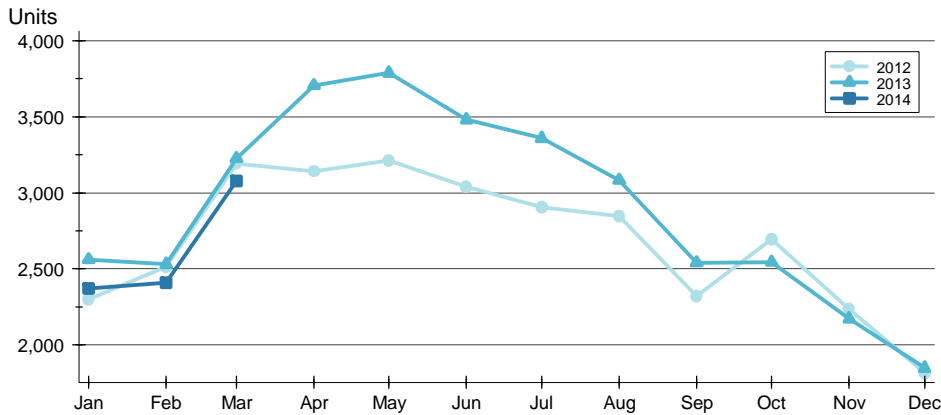
A total of 3,078 contracts for sale were written in the state of Kansas during the month of March, down from 3,227 in 2013. The median list price of these homes was \$139,900, down from \$147,000 the prior year.

Half of the homes that went under contract in March were on the market less than 35 days, compared to 47 days in March 2013.

CONTRACTS WRITTEN ANALYSIS

BY MONTH >>

**ENTIRE STATE OF KANSAS
ALL HOMES
AS OF 4/15/2014**



Month	2012	2013	2014
January	2,298	2,561	2,370
February	2,513	2,529	2,410
March	3,193	3,227	3,078
April	3,142	3,707	
May	3,215	3,789	
June	3,040	3,482	
July	2,904	3,359	
August	2,848	3,083	
September	2,320	2,541	
October	2,697	2,544	
November	2,236	2,172	
December	1,817	1,848	

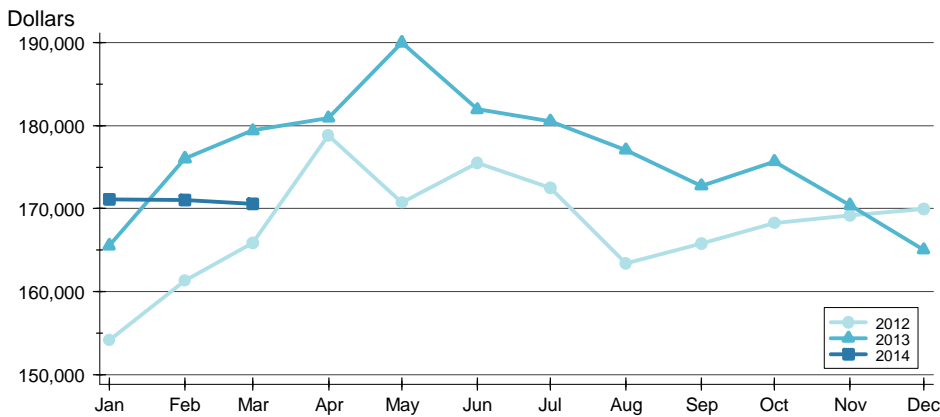
BY PRICE RANGE >>

Price Range	Contracts Written			List Price		Days on Market		List as % Orig.	
	Number	Percent	Volume	Average	Median	Average	Median	Average	Median
Below \$25,000	109	3.5%	2,005	18,392	19,500	88	49	79.6%	84.3%
\$25,000-\$49,999	247	8.0%	9,648	39,062	39,900	105	40	89.2%	95.0%
\$50,000-\$99,999	636	20.7%	48,811	76,747	75,000	88	53	94.9%	100.0%
\$100,000-\$124,999	310	10.1%	35,177	113,473	114,700	79	48	97.0%	100.0%
\$125,000-\$149,999	388	12.6%	53,546	138,005	137,950	74	33	97.5%	100.0%
\$150,000-\$174,999	298	9.7%	48,361	162,284	161,775	74	31	97.5%	100.0%
\$175,000-\$199,999	242	7.9%	45,211	186,821	185,000	59	30	98.2%	100.0%
\$200,000-\$249,999	263	8.5%	59,332	225,597	225,000	64	27	98.9%	100.0%
\$250,000-\$299,999	193	6.3%	53,101	275,133	274,950	83	23	98.2%	100.0%
\$300,000 and up	345	11.2%	161,851	469,133	399,000	84	33	99.0%	100.0%
All price ranges	3,078	100.0%	525,059	170,584	139,900	80	35	96.0%	100.0%

CONTRACTS WRITTEN ANALYSIS

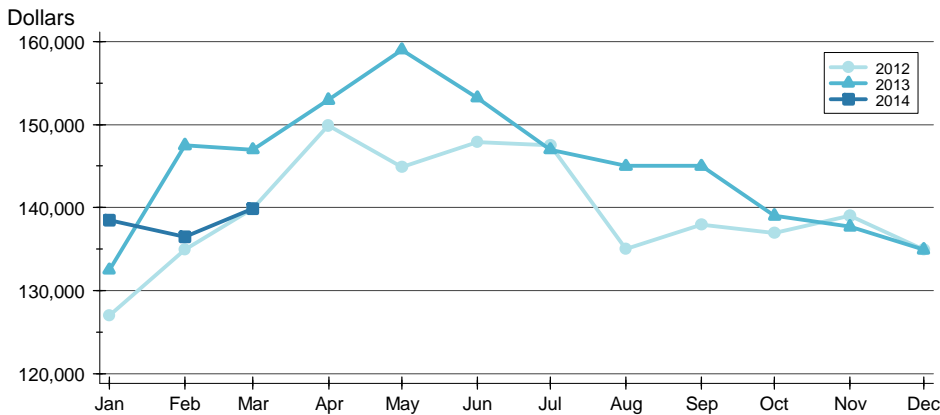
**ENTIRE STATE OF KANSAS
ALL HOMES
AS OF 4/15/2014**

AVERAGE PRICE >>



Month	2012	2013	2014
January	154,093	165,537	171,090
February	161,323	176,032	171,030
March	165,900	179,416	170,584
April	178,820	180,922	
May	170,758	190,028	
June	175,508	181,970	
July	172,487	180,540	
August	163,399	177,086	
September	165,822	172,749	
October	168,226	175,681	
November	169,169	170,396	
December	169,947	165,051	

MEDIAN PRICE >>

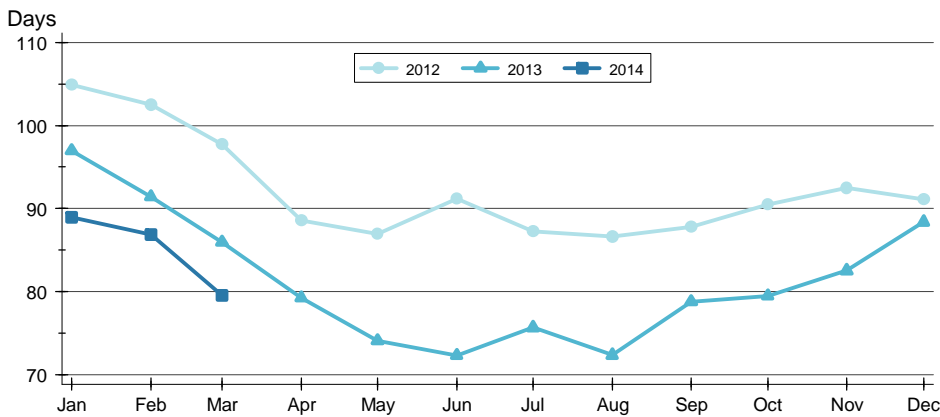


Month	2012	2013	2014
January	127,000	132,500	138,500
February	134,900	147,500	136,500
March	139,900	147,000	139,900
April	149,900	152,950	
May	144,900	159,000	
June	147,900	153,250	
July	147,500	147,000	
August	135,000	145,000	
September	137,900	145,000	
October	136,900	139,000	
November	139,000	137,700	
December	134,900	134,900	

CONTRACTS WRITTEN ANALYSIS

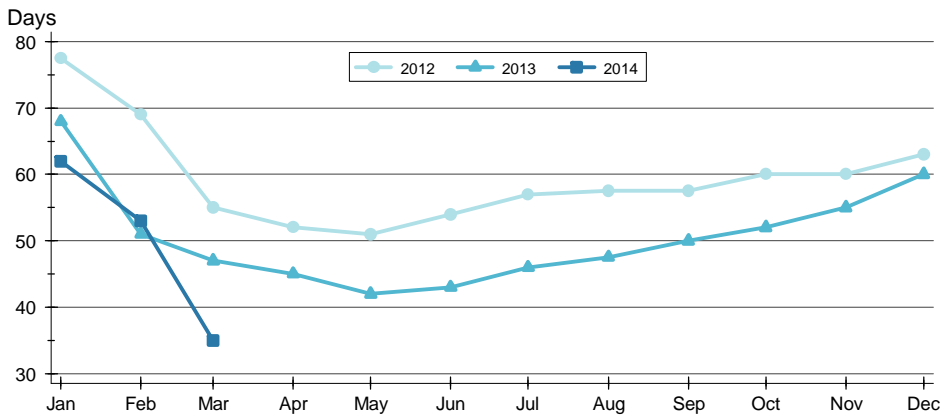
**ENTIRE STATE OF KANSAS
ALL HOMES
AS OF 4/15/2014**

AVERAGE DOM »



Month	2012	2013	2014
January	105	97	89
February	103	91	87
March	98	86	80
April	89	79	
May	87	74	
June	91	72	
July	87	76	
August	87	72	
September	88	79	
October	90	79	
November	93	83	
December	91	88	

MEDIAN DOM »

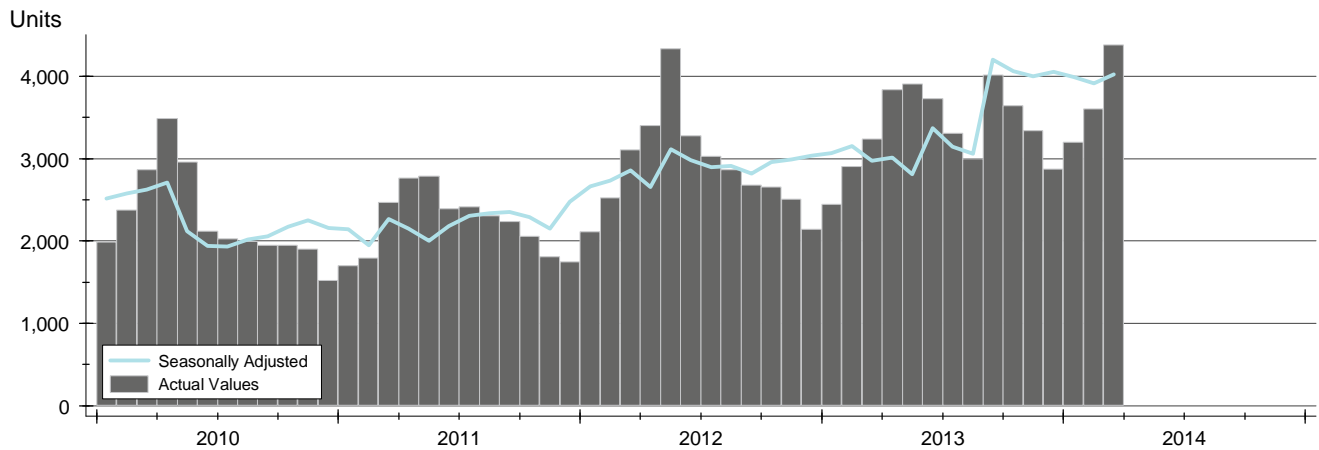


Month	2012	2013	2014
January	78	68	62
February	69	51	53
March	55	47	35
April	52	45	
May	51	42	
June	54	43	
July	57	46	
August	58	48	
September	58	50	
October	60	52	
November	60	55	
December	63	60	

PENDING CONTRACTS ANALYSIS

HISTORY >>

**ENTIRE STATE OF KANSAS
ALL HOMES
AS OF 4/15/2014**



SUMMARY >>

Summary Statistics for Pending Contracts		End of March		
		2014	2013	Change
Pending Contracts		4,378	3,238	35.2%
Volume (1,000s)		848,799	656,166	29.4%
Average	List Price	193,878	202,646	-4.3%
	Days on Market	86	87	-0.8%
	Percent of Original	97.4%	96.8%	0.6%
Median	List Price	148,000	159,900	-7.4%
	Days on Market	37	39	-5.1%
	Percent of Original	100.0%	100.0%	0.0%

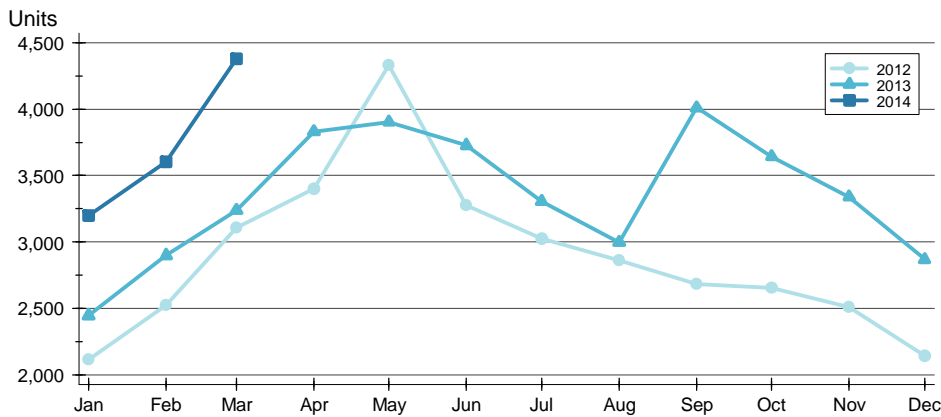
A total of 4,378 listings in the state of Kansas had contracts pending at the end of March, up from 3,238 contracts pending at the end of March 2013.

Pending contracts reflect listings with a contract in place at the end of the month. In contrast, contracts written measures the number of listings put under contract during the month.

PENDING CONTRACTS ANALYSIS

**ENTIRE STATE OF KANSAS
ALL HOMES
AS OF 4/15/2014**

BY MONTH >>



Month	2012	2013	2014
January	2,113	2,444	3,196
February	2,521	2,899	3,603
March	3,108	3,238	4,378
April	3,402	3,832	
May	4,331	3,904	
June	3,277	3,727	
July	3,027	3,306	
August	2,862	2,998	
September	2,681	4,011	
October	2,655	3,644	
November	2,508	3,339	
December	2,142	2,868	

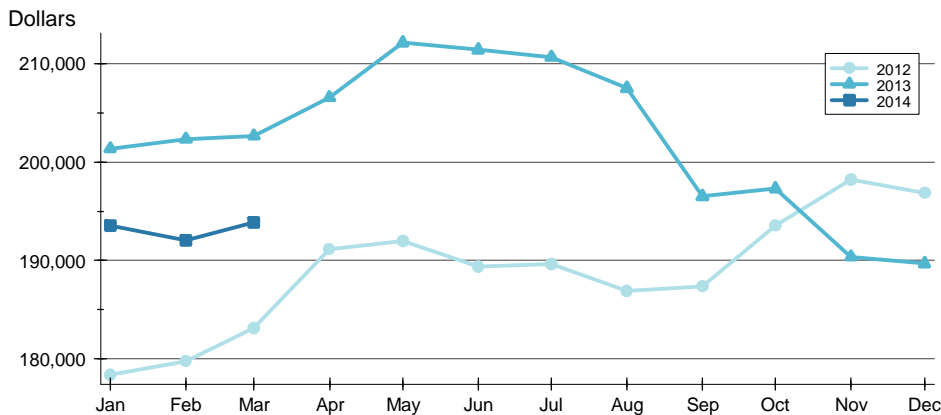
BY PRICE RANGE >>

Price Range	Contracts Pending			List Price		Days on Market		List as % Orig.	
	Number	Percent	Volume	Average	Median	Average	Median	Average	Median
Below \$25,000	107	2.4%	2,018	18,860	19,900	88	47	87.7%	100.0%
\$25,000-\$49,999	285	6.5%	11,288	39,607	40,000	108	48	93.1%	100.0%
\$50,000-\$99,999	882	20.1%	68,063	77,169	78,000	110	64	96.0%	100.0%
\$100,000-\$124,999	470	10.7%	53,376	113,566	114,900	91	53	97.3%	100.0%
\$125,000-\$149,999	489	11.2%	67,426	137,885	138,000	87	45	98.0%	100.0%
\$150,000-\$174,999	413	9.4%	66,673	161,435	160,000	79	36	98.2%	100.0%
\$175,000-\$199,999	309	7.1%	57,816	187,108	185,900	74	30	98.6%	100.0%
\$200,000-\$249,999	388	8.9%	87,961	226,704	227,350	75	27	98.9%	100.0%
\$250,000-\$299,999	270	6.2%	74,229	274,924	274,975	83	26	98.9%	100.0%
\$300,000 and up	738	16.9%	354,714	480,643	422,693	63	9	99.4%	100.0%
All price ranges	4,378	100.0%	848,799	193,878	148,000	86	37	97.4%	100.0%

PENDING CONTRACTS ANALYSIS

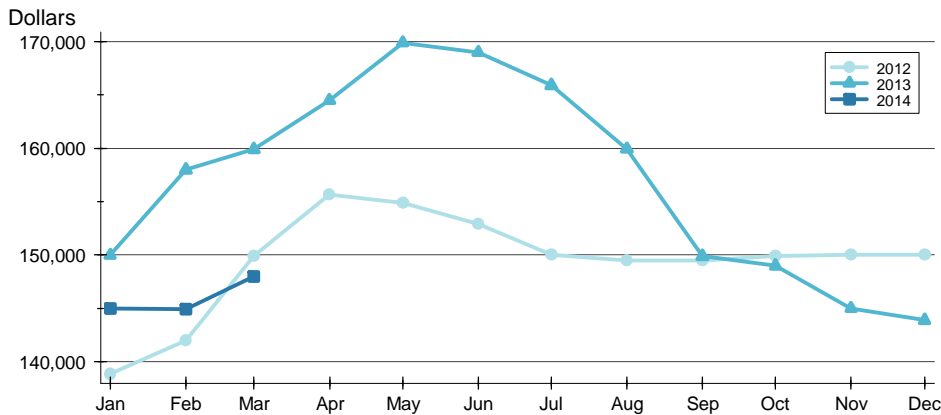
**ENTIRE STATE OF KANSAS
ALL HOMES
AS OF 4/15/2014**

AVERAGE PRICE >>



Month	2012	2013	2014
January	178,436	201,335	193,530
February	179,765	202,315	192,024
March	183,124	202,646	193,878
April	191,118	206,539	
May	191,987	212,118	
June	189,408	211,396	
July	189,657	210,652	
August	186,939	207,494	
September	187,355	196,509	
October	193,528	197,294	
November	198,208	190,363	
December	196,883	189,696	

MEDIAN PRICE >>

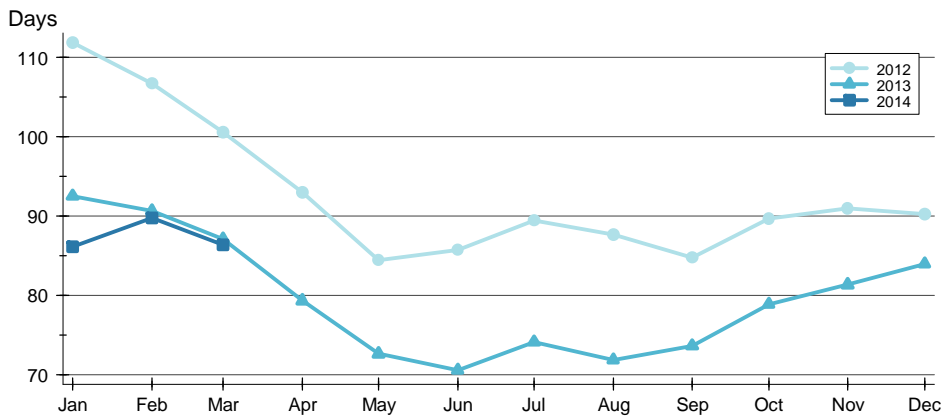


Month	2012	2013	2014
January	138,900	150,000	145,000
February	142,000	158,000	144,900
March	149,900	159,900	148,000
April	155,645	164,500	
May	154,900	169,900	
June	152,900	169,000	
July	150,000	165,900	
August	149,500	159,925	
September	149,500	149,900	
October	149,900	149,000	
November	150,000	145,000	
December	150,000	143,900	

PENDING CONTRACTS ANALYSIS

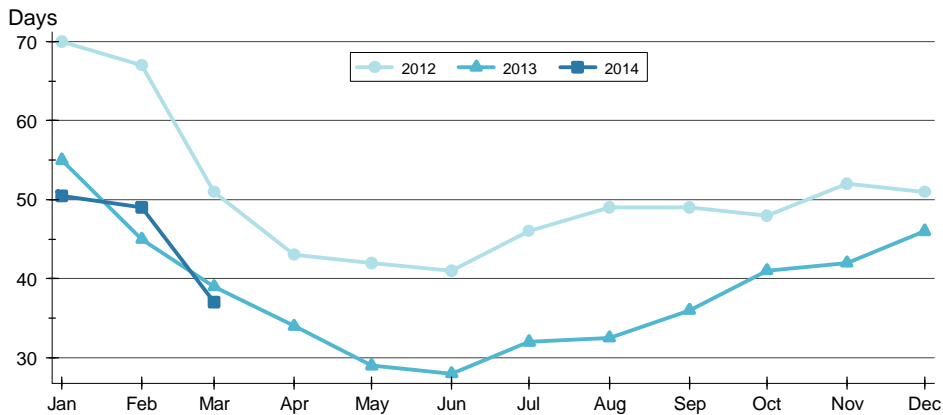
**ENTIRE STATE OF KANSAS
ALL HOMES
AS OF 4/15/2014**

AVERAGE DOM >>



Month	2012	2013	2014
January	112	93	86
February	107	91	90
March	101	87	86
April	93	79	
May	84	73	
June	86	71	
July	89	74	
August	88	72	
September	85	74	
October	90	79	
November	91	81	
December	90	84	

MEDIAN DOM >>



Month	2012	2013	2014
January	70	55	51
February	67	45	49
March	51	39	37
April	43	34	
May	42	29	
June	41	28	
July	46	32	
August	49	33	
September	49	36	
October	48	41	
November	52	42	
December	51	46	